

VORTAC DRK 114.1 Chan 88	APP CRS 125°	Rwy Idg 4258 TDZE 5027 Apt Elev 5045
--	------------------------	---

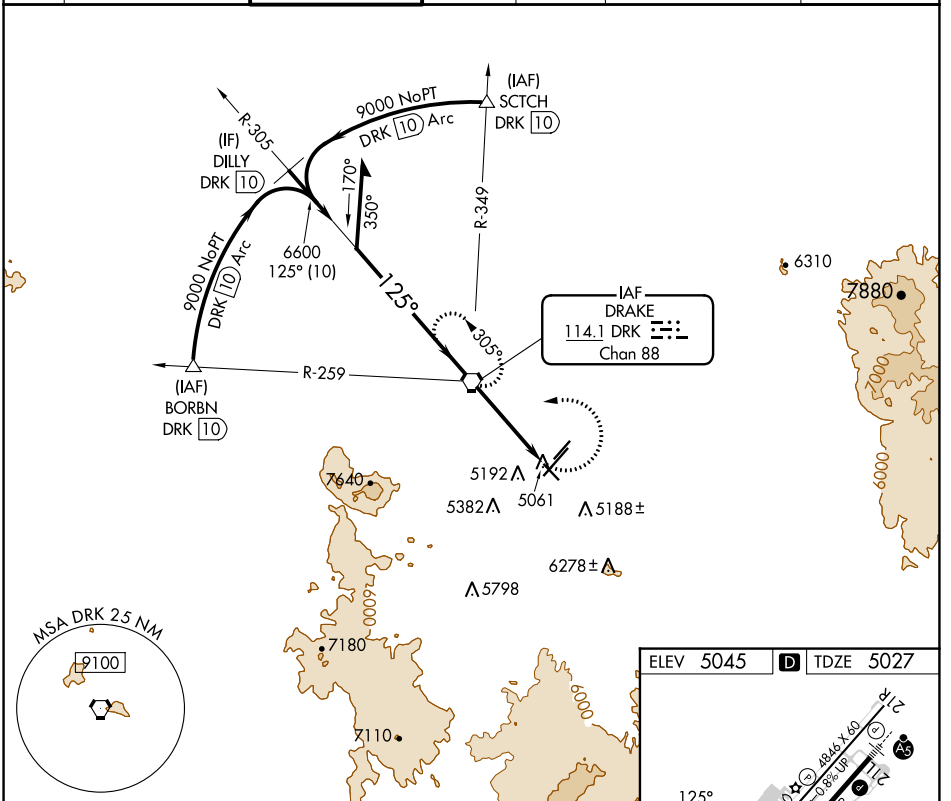
VOR RWY 12

PRESCOTT RGNL-ERNEST A LOVE FIELD (P.R.C)

⚠ Rwy 12 helicopter visibility reduction below 3/4 SM NA.
Circling Rwy 3L, 30 NA at night.

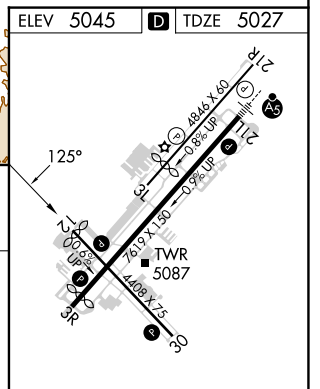
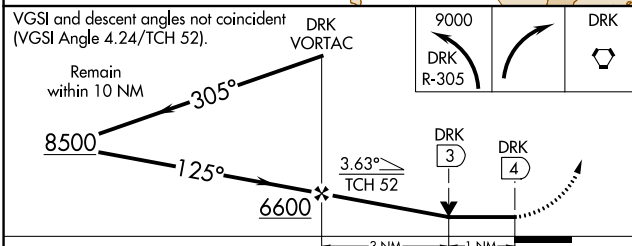
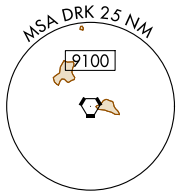
MISSED APPROACH: Climbing left turn to 9000 via DRK VORTAC R-305 then right turn direct DRK VORTAC and hold, continue climb-in-hold to 9000.

ATIS 127.2	PHOENIX APP CON 133.575 281.55	PRESCOTT TOWER * 125.3 (CTAF) 257.9	GND CON 121.7	CLNC DEL 119.25	128.75 (12-30) 125.3 (CTAF) (3R-21L)	UNICOM 122.95
----------------------	--	--	-------------------------	---------------------------	---	-------------------------



SW-4, 07 SEP 2023 to 05 OCT 2023

SW-4, 07 SEP 2023 to 05 OCT 2023



CATEGORY	A	B	C	D
S-12	5460-1	433 (500-1)	5460-1 1/4 433 (500-1 1/4)	NA
C CIRCLING	5520-1 475 (500-1)	5760-1 715 (800-1)	6080-3 1035 (1100-3)	NA

MIRL Rwy 3L-21R and 3R-21L	
MIRL Rwy 12-30	
REIL Rwy 3R, 12, and 30	
FAF to MAP 4 NM	
Knots	60 90 120 150 180
Min:Sec	4:00 2:40 2:00 1:36 1:20