

SPOKANE, WASHINGTON

ILS or LOC RWY 23

LOC I-SKA 110.3	APCH CRS 231°	Rwy Idg 13,899 TDZE 2423 Arprt Elev 2462	AL-553 [USAF]	FAIRCHILD AFB (KSKA)
---------------------------	-------------------------	---	---------------	----------------------

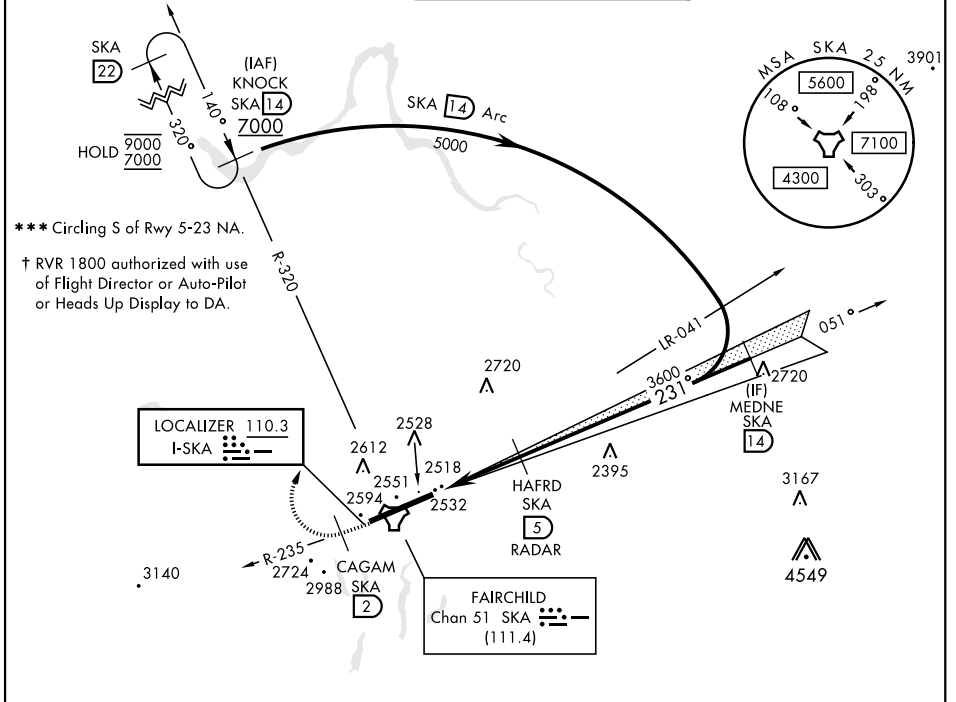
DME or RADAR reqrd for LOC. RADAR reqrd for KNOCK holding.

ALSIF-1

MISSED APPROACH: Climb to 7000 via SKA R-235. At CAGUM, turn right heading 005° to intcp SKA R-320 to KNOCK and hold, cont climb in hold to 7000.

▲ When ALS inop, increase RVR to 40 and vis to ¼ mile.
****** When ALS inop, increase RVR to 55 and vis to 1 mile.

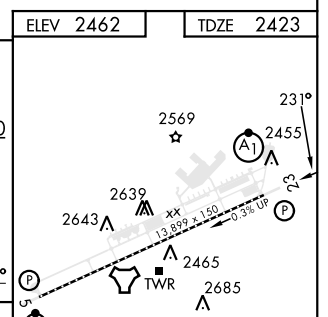
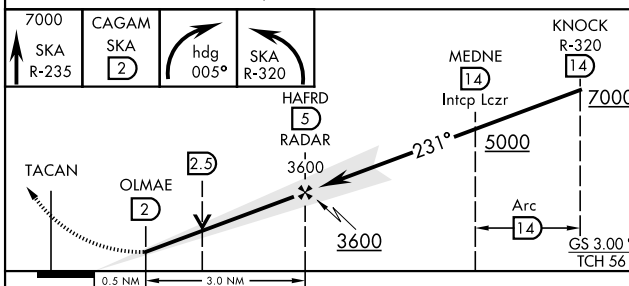
ATIS 257.625	SPOKANE APP CON 123.75 282.25 (208° - 028°) 133.35 263.0 (029° - 207°)	TOWER 120.35 233.7	GND CON 123.6 275.8
------------------------	--	------------------------------	-------------------------------



NW-1, 07 SEP 2023 to 05 OCT 2023

NW-1, 07 SEP 2023 to 05 OCT 2023

EMERG SAFE ALT 100 NM 10,900



CATEGORY	A	B	C	D	E
S-ILS 23 * †	2623/24		200	(200-½)	
S-LOC 23 **	2800/24	377 (400-½)	2800/35	377	(400-¾)
CIRCLING ***	2900-1 438 (500-1)	2920-1 458 (500-1)	3040-1½ 578 (600-1½)	3040-2 578 (600-2)	3600-3 1138 (1200-3)

ELEV 2462	TDZE 2423				
HIRL Rwy 5-23 TDZL/CL Rwy 5					
FAF to MAP 3.0 NM					
Knots	60	90	120	150	180
Min:Sec	3:00	2:00	1:30	1:12	1:00

SPOKANE, WASHINGTON 47°37'N-117°39'W FAIRCHILD AFB (KSKA)

Amdt 4 03NOV22

ILS or LOC RWY 23