

SPOKANE, WASHINGTON

RNAV (GPS) RWY 5

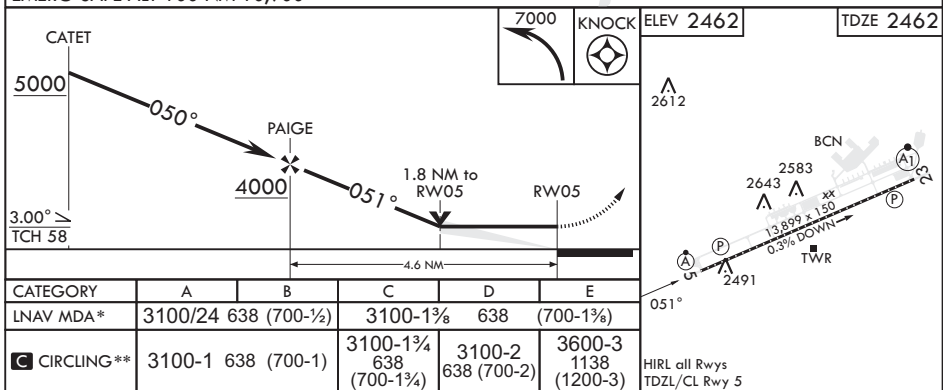
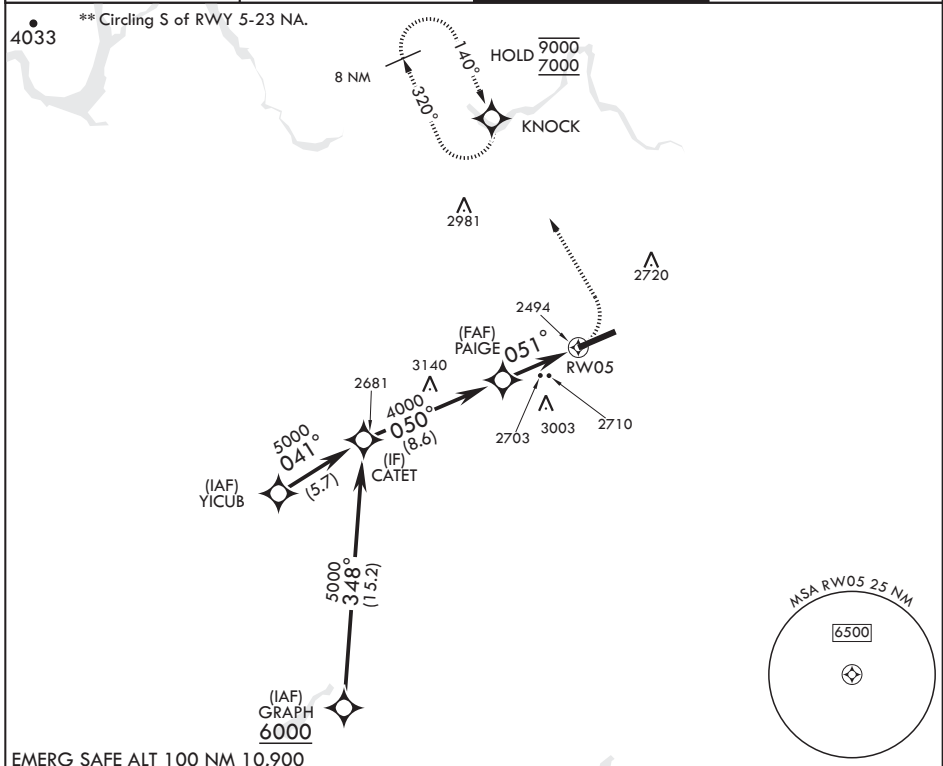
| | | |
|-------------|------------|---------------|
| APCH CRS | Rwy Idg | 13,899 |
| 051° | TDZE | 2462 |
| | Arprt Elev | 2462 |

AL-553 (USAF)

FAIRCHILD AFB (KSKA)

| | | |
|---|--------|--|
| RNP APCH | ALSF-2 | MISSED APPROACH: Climbing left turn to 7000 direct KNOCK and hold, continue climb in hold to 7000. |
| RADAR required for KNOCK holding. | | |
| <p>▼ * When ALS inop, increase CAT A RVR to 55, vis to 1 mile, CAT B RVR to 60, vis to 1 1/4 miles, and CAT CDE vis to 2 1/2 miles.</p> | | |

| | | | |
|------------------------|--|------------------------------|-------------------------------|
| ATIS 257.625 | SPOKANE APP CON 123.75 282.25 (208°-028°) 133.35 263.0 (029°-207°) | TOWER 120.35 233.7 | GND CON 123.6 275.8 |
|------------------------|--|------------------------------|-------------------------------|



SPOKANE, WASHINGTON
Amdt 2 03NOV22

47°37'N - 117°39'W

FAIRCHILD AFB (KSKA)

RNAV (GPS) RWY 5

NW-1, 07 SEP 2023 to 05 OCT 2023

NW-1, 07 SEP 2023 to 05 OCT 2023