

SPOKANE, WASHINGTON

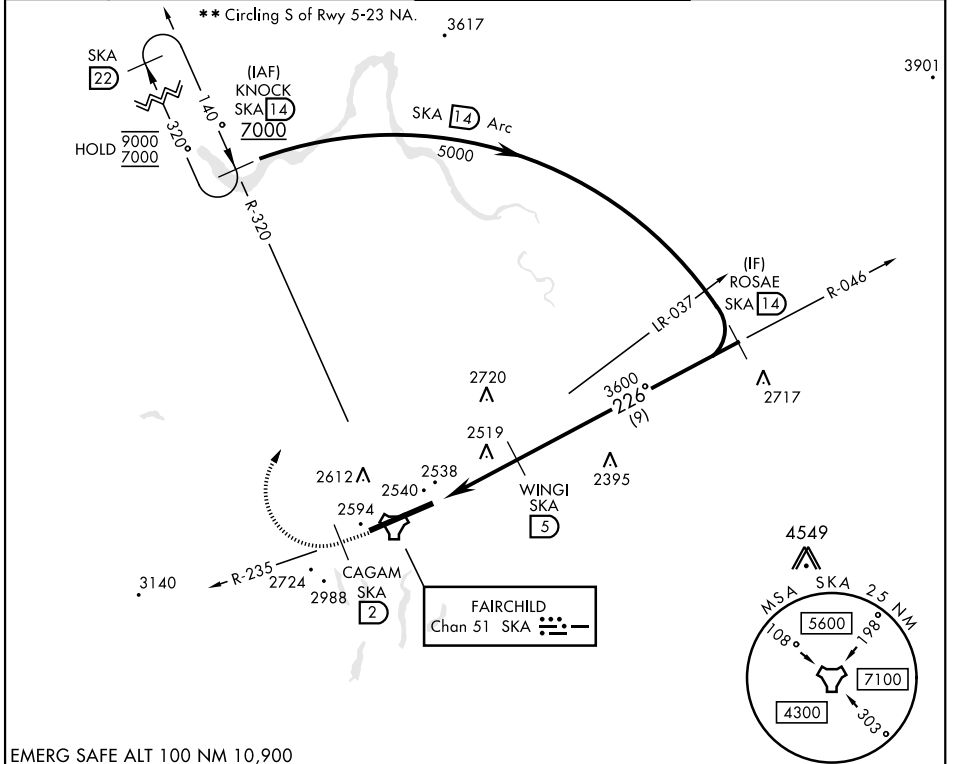
TACAN RWY 23

TACAN SKA Chan 51	APCH CRS 226°	Rwy Idg 13,899 TDZE 2423 Arpt Elev 2462	AL-553 [USAF]	FAIRCHILD AFB (KSKA)
-----------------------------	-------------------------	--	---------------	----------------------

RADAR required for KNOCK holding.

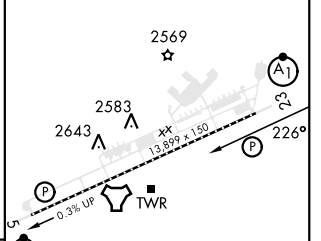
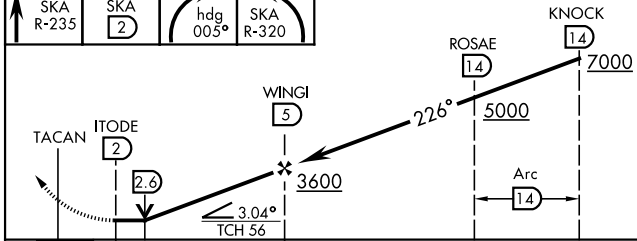
ALSIF-1  MISSED APPROACH: Climb to 7000 via SKA TACAN R-235. At CAGAM, turn right hdg 005° to intcp SKA R-320 to KNOCK and hold, cont climb in hold to 7000.

ATIS 257.625	SPOKANE APP CON 123.75 282.25 <small>(208° - 028°)</small> 133.35 263.0 <small>(029° - 207°)</small>	TOWER 120.35 233.7	GND CON 123.6 275.8
------------------------	--	------------------------------	-------------------------------



EMERG SAFE ALT 100 NM 10,900

7000	CAGAM SKA 2	hdg 005°	SKA R-320	ELEV 2462	TDZE 2423
------	-------------	----------	-----------	-----------	-----------



CATEGORY	A	B	C	D	E	
S-23 *	2820/24	397 (400-1/2)	2820/35	397	(400-5/8)	
CIRCLING **	2900-1 438 (500-1)	2920-1 458 (500-1)	3040-1 1/2 578 (600-1 1/2)	3040-2 578 (600-2)	3600-3 1138 (1200-3)	HIRL Rwy 5-23 TDZL/CL Rwy 5

SPOKANE, WASHINGTON 47°37'N-117°39'W FAIRCHILD AFB (KSKA)

Amtd 4 03NOV22

TACAN RWY 23

NW-1, 07 SEP 2023 to 05 OCT 2023

NW-1, 07 SEP 2023 to 05 OCT 2023