

ABERDEEN, MARYLAND

# RNAV (GPS) RWY 22

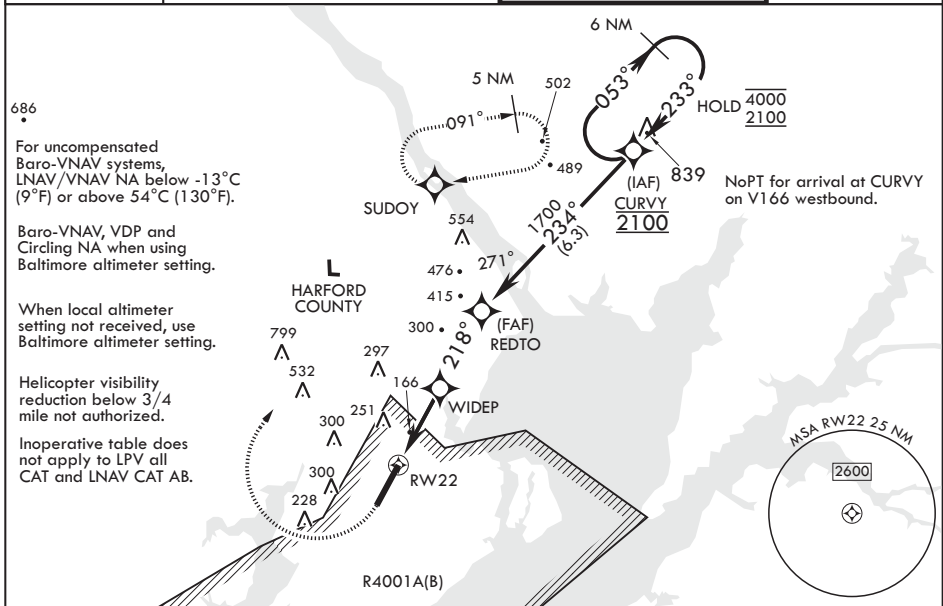
WAAS CH 70342 W22A	APCH CRS 218°	Rwy ldg TDZE 45	7998 45
Arpt Elev 45			

AL-555 (USA)

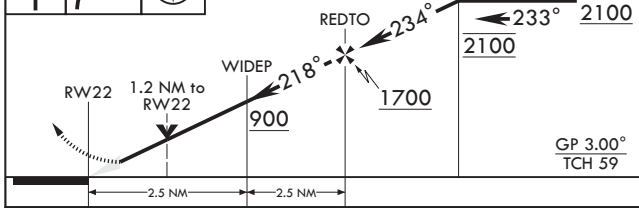
PHILLIPS AAF (ABERDEEN PROVING GROUND) (KAPG)

RNP APCH-GPS	MISSED APPROACH: Climb to 500, then climbing right turn to 2000 direct SUDOY and hold.
<b>V</b> ** Circling NA SE of RWY 4-22.	

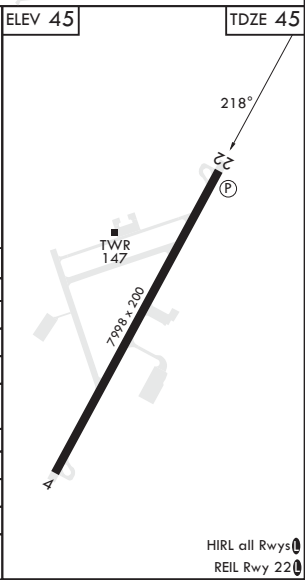
ATIS* 124.425	POTOMAC APP CON/DEP CON 125.525 291.625	TOWER* 126.15 (CTAF) <b>229.6</b>	GND CON 121.9
------------------	--	--------------------------------------	------------------



500	2000	SUDOY	VGSI and RNAV glidepath not coincident (VGSI Angle 3.00/TCH 49).	6 NM Holding Pattern	ELEV 45	TDZE 45
				CURVY 4000 2100		



CATEGORY	A	B	C	D
LPV DA	295-1	250	(300-1)	
LNAV/VNAV DA	560-1 3/8	515	(600-1 3/8)	
LNAV MDA	560-1 515	(600-1)	560-1 3/8 515	(600-1 3/8)
<b>C</b> CIRCLING**	560-1 515 (600-1)	640-1 595 (600-1)	680-1 3/4 635 (700-1 3/4)	880-2 3/4 835 (900-2 3/4)
BALTIMORE WASHINGTON INTL ALTIMETER SETTING MINIMUMS				
LPV DA	376-1 1/4	281	(300-1 1/4)	
LNAV/VNAV DA	657-1 3/4	612	(600-1 3/4)	
LNAV MDA	660-1 1/4 515	(700-1 1/4)	660-1 3/4 515	(700-1 3/4)
<b>C</b> CIRCLING**	660-1 615 (700-1 1/4)	740-1 1/4 695 (700-1 1/4)	780-2 735 (800-2)	961-3 916 (1000-3)



ABERDEEN, MARYLAND

39°28'N - 76°10'W PHILLIPS AAF (ABERDEEN PROVING GROUND) (KAPG)

Amdt 3 15JUN23

# RNAV (GPS) RWY 22

NE-3, 07 SEP 2023 to 05 OCT 2023

NE-3, 07 SEP 2023 to 05 OCT 2023

HIRL all Rwy's **V**  
REIL Rwy 22 **V**