

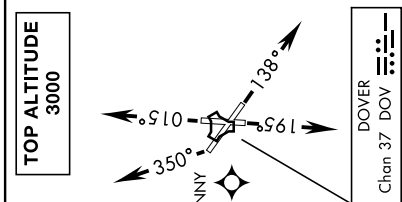
CANNY ONE DEPARTURE (RNAV)(CANNY1•CNY)

NE-3, 07 SEP 2023 to 05 OCT 2023

ATIS 127.825 273.5
 CLNC DEL 125.55 289.4
 GND CON 118.875 225.4
 TOWER 126.35 279.625
 DOVER DEP CON 132.425 323.0

CANNY ONE DEPARTURE (RNAV)(CANNY1•CNY)

Amdt 2 16JUN22
 TERPS



AL-562 [USAF]

RNAV 1

GPS REQUIRED RADAR REQUIRED

DEPARTURE ROUTE DESCRIPTION

TAKEOFF RWY 1, 14, 19, 32: Climb on depicted heading until vectored by ATC, maintain 3000. Expect RADAR vectors to CANNY, thence...

...via depicted route to TERPZ, then via assigned transition. Maintain ATC assigned altitude. Expect further clearance to filed altitude within 10 minutes after departure.

- FLASK TRANSITION (CANNY1:FLASK)
- GLANC TRANSITION (CANNY1:GLANC)
- JERES TRANSITION (CANNY1:JERES)
- MAJLS TRANSITION (CANNY1:MAJLS)
- MCRAJ TRANSITION (CANNY1:MCRAJ)
- MELTN TRANSITION (CANNY1:MELTN)
- OTTO TRANSITION (CANNY1:OTTO)
- RAMAY TRANSITION (CANNY1:RAMAY)
- RRSIN TRANSITION (CANNY1:RRSIN)

NOTE: Chart not to scale

NE-3, 07 SEP 2023 to 05 OCT 2023