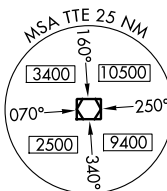
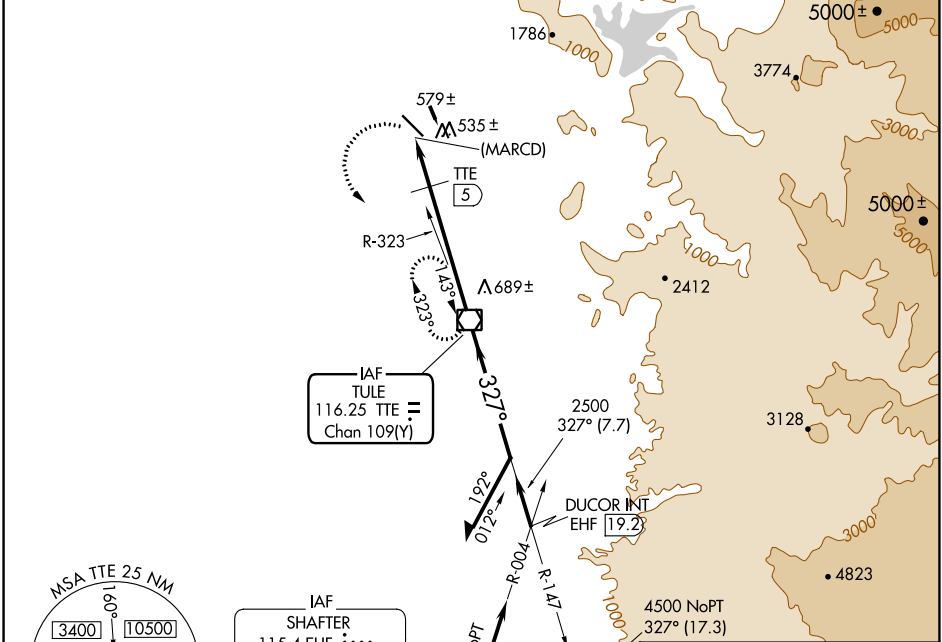


VOR/DME TTE <b>116.25</b> Chan <b>109(Y)</b>	APP CRS <b>327°</b>	Rwy Idg TDZE Apt Elev <b>N/A</b> <b>N/A</b> <b>442</b>
--	------------------------	---

**VOR or GPS-A**  
PORTERVILLE MUNI (P'TV)

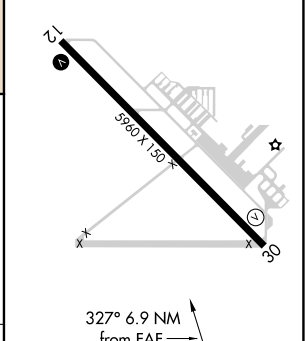
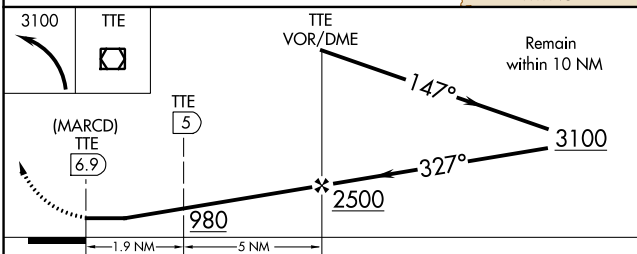
**▽** MISSED APPROACH: Climbing left turn to 3100 direct TTE VOR/DME and hold.

AWOS-3PT <b>134.625</b>	BAKERFIELD APP CON★ <b>120.5</b>	UNICOM <b>122.8 (CTAF)</b>
----------------------------	-------------------------------------	-------------------------------



IAF  
SHAFTER  
115.4 EHF  
Chan 101

ELEV 442



CATEGORY	A	B	C	D
CIRCLING	980-1	538 (600-1)	980-1½ 538 (600-1½)	1000-2 558 (600-2)
DME MINIMA				
CIRCLING	880-1 438 (500-1)	900-1 458 (500-1)	940-1½ 498 (500-1½)	1080-2 638 (700-2)

FAF to MAP 6.9 NM

REIL Rwy 30	HIRL Rwy 12-30
Knots	60 90 120 150 180
Min:Sec	6:54 4:36 3:27 2:46 2:18

SW-2, 07 SEP 2023 to 05 OCT 2023

SW-2, 07 SEP 2023 to 05 OCT 2023