

WAAS CH <b>58003</b> <b>W14A</b>	APP CRS <b>136°</b>	Rwy Idg <b>5502</b> TDZE <b>583</b> Apt Elev <b>583</b>
--	------------------------	---

# RNAV (GPS) RWY 14

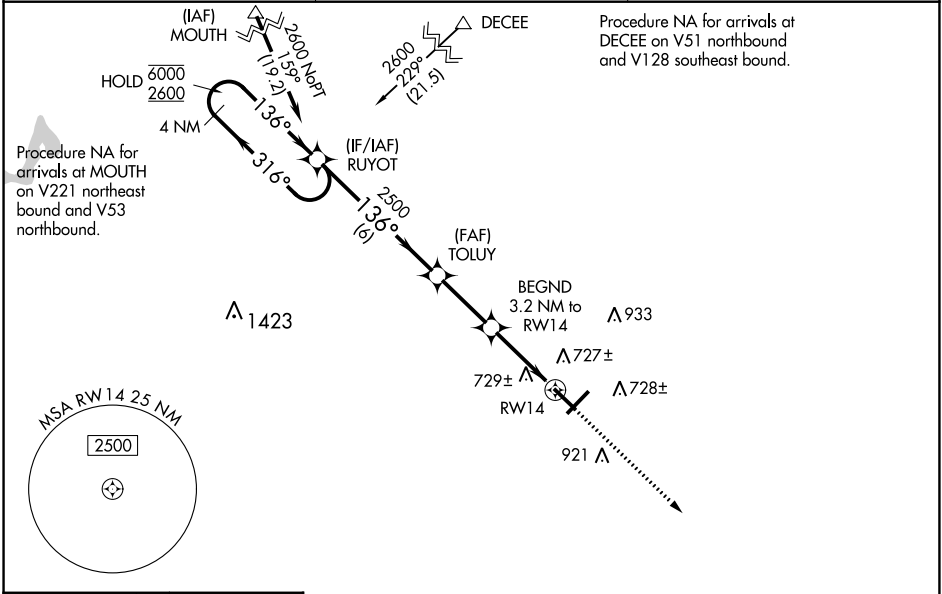
FREEMAN MUNI (SE.R)

RNP APCH - GPS.

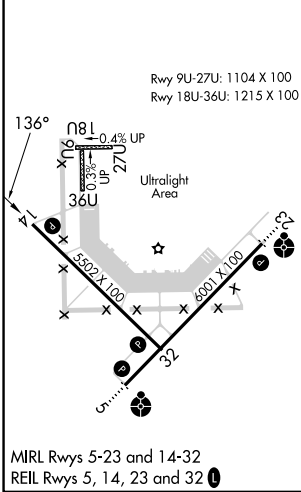
**NA** Baro-VNAV and VDP NA when using Louisville Muhammad Ali Intl altimeter setting. Rwy 14 helicopter visibility reduction below 3/4 SM NA. For uncompensated Baro-VNAV systems, LNAV/VNAV NA below -16°C or above 54°C. When local altimeter setting not received, use Louisville Muhammad Ali Intl altimeter setting and increase all DA 117 feet and all MDA 120 feet; increase LPV and LNAV/VNAV all Cats and LNAV and Circling Cats C/D visibility 1/4 SM.

**MISSED APPROACH:**  
Climb to 2400 direct ZEKAM and hold.

AWOS-3 <b>119.425</b>	INDIANAPOLIS CENTER <b>124.775 269.025</b>	UNICOM <b>122.8 (CTAF) 0</b>
--------------------------	---	---------------------------------



ELEV <b>583</b>	TDZE <b>583</b>
-----------------	-----------------



4 NM Holding Pattern RUYOT	VGSI and RNAV glidepath not coincident (VGSI Angle 3.00/TCH 24).	2400 ZEKAM		
6000 ← 316°	2600 → 136°	2500 TOLUY		
GP 3.00° TCH 40	2500	1640 BEGND 3.2 NM to RW14		
	6 NM	1.2 NM to RW14		
		2.7 NM		
		2 NM		
		1.2 NM		
CATEGORY	A	B	C	D
LPV DA		860-7/8	277 (300-7/8)	
LNAV/VNAV DA		1037-13/8	454 (500-13/8)	
LNAV MDA	980-1	397 (400-1)	980-1 1/8	397 (400-1 1/8)
<b>C</b> CIRCLING	1040-1 457 (500-1)	1100-1 517 (600-1)	1300-2 717 (800-2)	1300-2 1/4 717 (800-2 1/4)

EC-2, 07 SEP 2023 to 05 OCT 2023

EC-2, 07 SEP 2023 to 05 OCT 2023