

LOC I-GPT 110.9	APCH CRS 137°	Rwy Idg TDZE Arpt Elev 9002 27 28	AL-576 [USAF]	GULFPORT-BILOXI INTL (KGPT)
---------------------------	-------------------------	---	---------------	-----------------------------

RADAR or DME required.

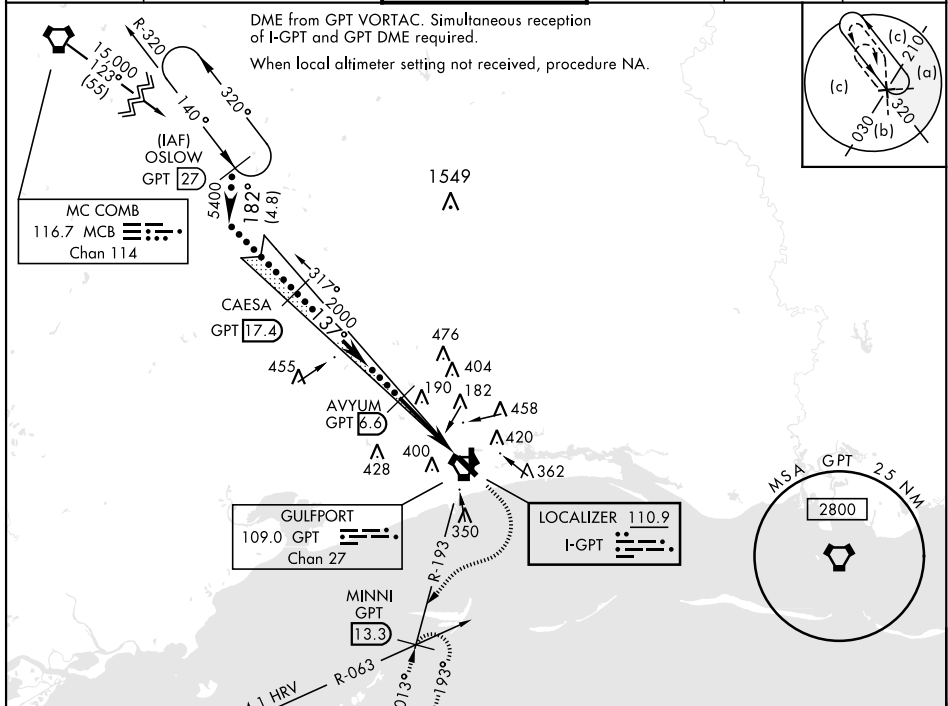
▼ * When ALS inop, increase RVR to 40.
RVR 18 authorized with use of FD or AP or HUD to DA.

▲ ** When ALS inop, increase vis to 1½ miles.

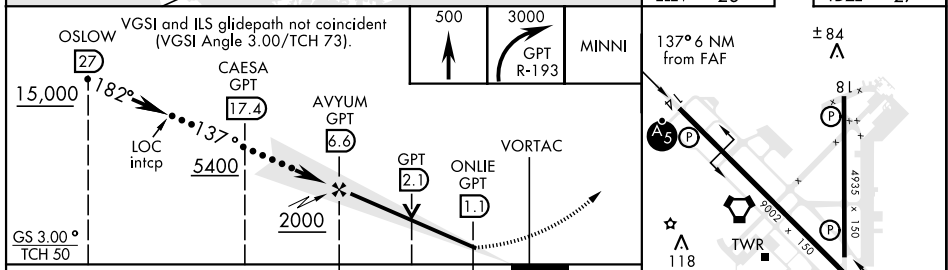
MALS

MISSED APPROACH: Climb to 500, then climbing right turn to 3000 on GPT VORTAC R-193 to MINNI/ GPT 13.3 DME and hold.

ATIS ★ 119.45	GULFPORT APP CON 124.6 354.1 130°-309° 127.5 254.25 310°-129°	GULFPORT TOWER ★ 123.7 CTAF 0 339.8	GND CON 120.4 348.6	UNICOM 122.95	ASR
-------------------------	---	--	-------------------------------	-------------------------	-----



EMERG SAFE ALT 100 NM 3100	
ELEV 28	TDZE 27



CATEGORY	C	D	E
S-ILS 14 *	227/24	200	(200-½)
S-LOC 14 **	560/55	533	(600-1¼)
CIRCLING	820-2¼ 792 (800-2¼)	820-2½ 792 (800-2½)	820-2¾ 792 (800-2¾)

HIRL Rwy 14-32
MRL Rwy 18-36

SC-4, 07 SEP 2023 to 05 OCT 2023

SC-4, 07 SEP 2023 to 05 OCT 2023