

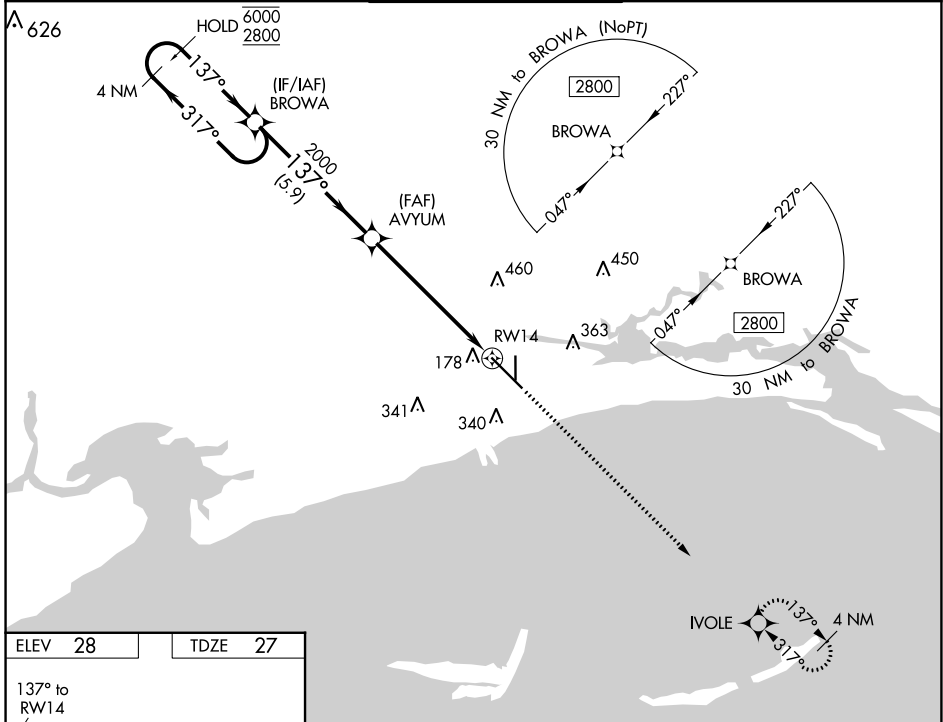
WAAS CH <b>97301</b> W14A	APP CRS <b>137°</b>	Rwy Idg <b>9002</b> TDZE <b>27</b> Apt Elev <b>28</b>
---------------------------------	------------------------	---

# RNAV (GPS) RWY 14

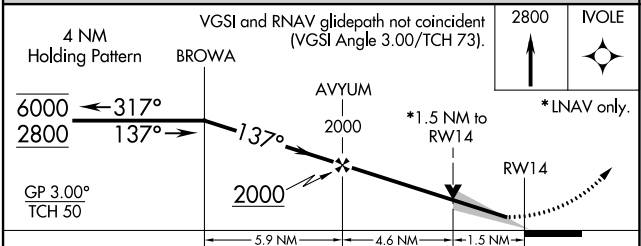
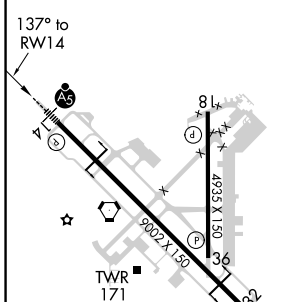
GULFPORT-BILOXI INTL (GPT)

RNP APCH.	MALS R	MISSED APPROACH: Climb to 2800 direct IVOLE and hold.
<p>▼ For uncompensated Baro-VNAV systems, LNAV/VNAV NA below -3°C or above 54°C. For inop ALS, increase LNAV/VNAV all Cats visibility to RVR 5500.                  ▲ ASR **RVR 1800 authorized with use of FD or AP or HUD to DA.</p>		

ATIS <b>119.45</b>	GULFPORT APP CON * <b>127.5 254.25</b>	GULFPORT TOWER * <b>123.7 (CTAF) 339.8</b>	GND CON <b>120.4 348.6</b>	UNICOM <b>122.95</b>
-----------------------	---	---	-------------------------------	-------------------------



ELEV 28	TDZE 27
---------	---------



CATEGORY	A	B	C	D
LPV DA**		227/24	200 (200-½)	
LNAV/VNAV DA		404/35	377 (400-⅝)	
LNAV MDA	580/24	553 (600-½)	580/60	553 (600-1¼)
CIRCLING	580-1 552 (600-1)	640-1 612 (700-1)	820-2¼ 792 (800-2¼)	820-2½ 792 (800-2½)

SC-4, 07 SEP 2023 to 05 OCT 2023

SC-4, 07 SEP 2023 to 05 OCT 2023