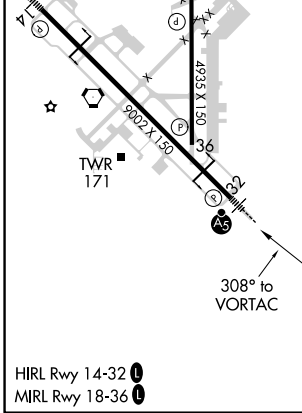
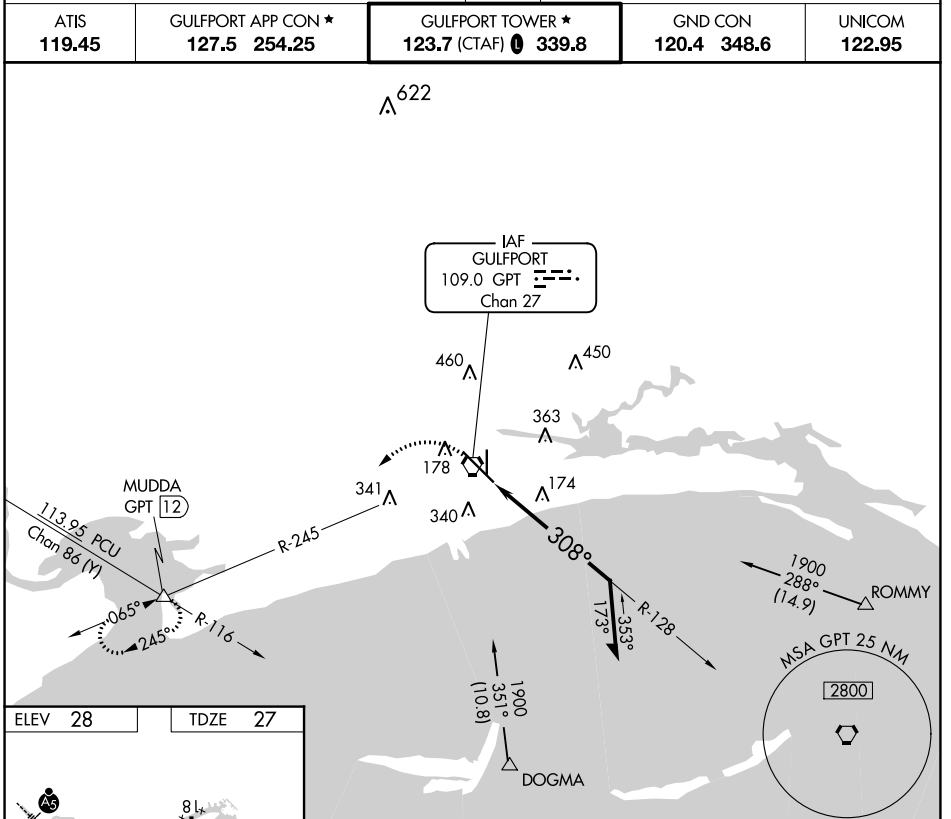


VORTAC GPT <b>109.0</b> Chan 27	APP CRS <b>308°</b>	Rwy Idg <b>9002</b> TDZE <b>27</b> Apt Elev <b>28</b>
---------------------------------------	------------------------	-------------------------------------------------------------

# VOR Y RWY 32

GULFPORT-BILOXI INTL (GPT)

<p>Rwy 32 helicopter visibility reduction below RVR 4000 NA. For inop ALS, increase S-32 Cat A/B visibility to RVR 5500.</p>	<p>MALS R</p>	<p>MISSED APPROACH: Climbing left turn to 2000 on GPT VORTAC R-245 to MUDDA INT/12 DME and hold.</p>		
			<p>ATIS <b>119.45</b></p>	<p>GULFPORT APP CON ★ <b>127.5 254.25</b></p>



ELEV 28	TDZE 27		
<p>2000</p>	<p>GPT R-245</p>	<p>MUDDA</p>	<p>VGSI and descent angles not coincident (VGSI Angle 3.00/TCH 72).</p>
<p>GPT VORTAC</p>			<p>Remain within 10 NM</p>

CATEGORY	A	B	C	D
S-32	480/40	453 (500-¾)	480/45	453 (500-¾)
<b>C</b> CIRCLING	520-1 492 (500-1)	640-1 612 (700-1)	760-2 732 (800-2)	760-2¼ 732 (800-2¼)

SC-4, 07 SEP 2023 to 05 OCT 2023

SC-4, 07 SEP 2023 to 05 OCT 2023