

# ELMAA FOUR DEPARTURE

AL-582 (FAA)

SEATTLE-TACOMA INTL (SEA)  
SEATTLE, WASHINGTON

SEATTLE DEP CON  
120.4 395.0

RADAR and DME required.

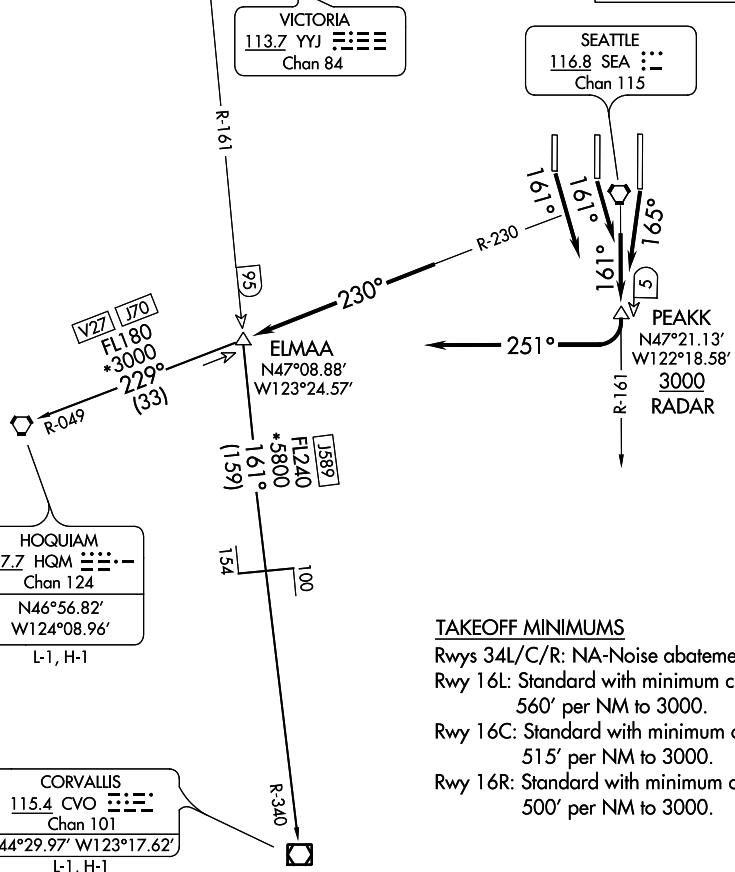
**TOP ALTITUDE:  
ASSIGNED BY ATC**

VICTORIA  
113.7 YYJ Chan 84

SEATTLE  
116.8 SEA Chan 115

HOQUIAM  
117.7 HQM Chan 124  
N46°56.82'  
W124°08.96'  
L-1, H-1

CORVALLIS  
115.4 CVO Chan 101  
N44°29.97' W123°17.62'  
L-1, H-1



TAKEOFF MINIMUMS  
 Rwys 34L/C/R: NA-Noise abatement.  
 Rwy 16L: Standard with minimum climb of 560' per NM to 3000.  
 Rwy 16C: Standard with minimum climb of 515' per NM to 3000.  
 Rwy 16R: Standard with minimum climb of 500' per NM to 3000.

NOTE: Chart not to scale.

## DEPARTURE ROUTE DESCRIPTION

TAKEOFF RUNWAY 16L: Climb on heading 165° and SEA R-161, thence. . . .

TAKEOFF RUNWAYS 16C, 16R: Climb on heading 161° and SEA R-161, thence. . . .

. . . .to cross PEAK/5 DME/RADAR at or above 3000, then right turn heading 251° to intercept SEA R-230 to ELMAA/HQM 33 DME, then on (transition/assigned route), expect requested altitude/flight level 15 NM from SEA.

CORVALLIS TRANSITION (ELMAA4.CVO): From over ELMAA on YYJ R-161 and CVO R-340 to CVO VOR/DME.

HOQUIAM TRANSITION (ELMAA4.HQM): From over ELMAA on HQM R-049 to HQM VORTAC.

# ELMAA FOUR DEPARTURE

NW-1, 07 SEP 2023 to 05 OCT 2023

NW-1, 07 SEP 2023 to 05 OCT 2023