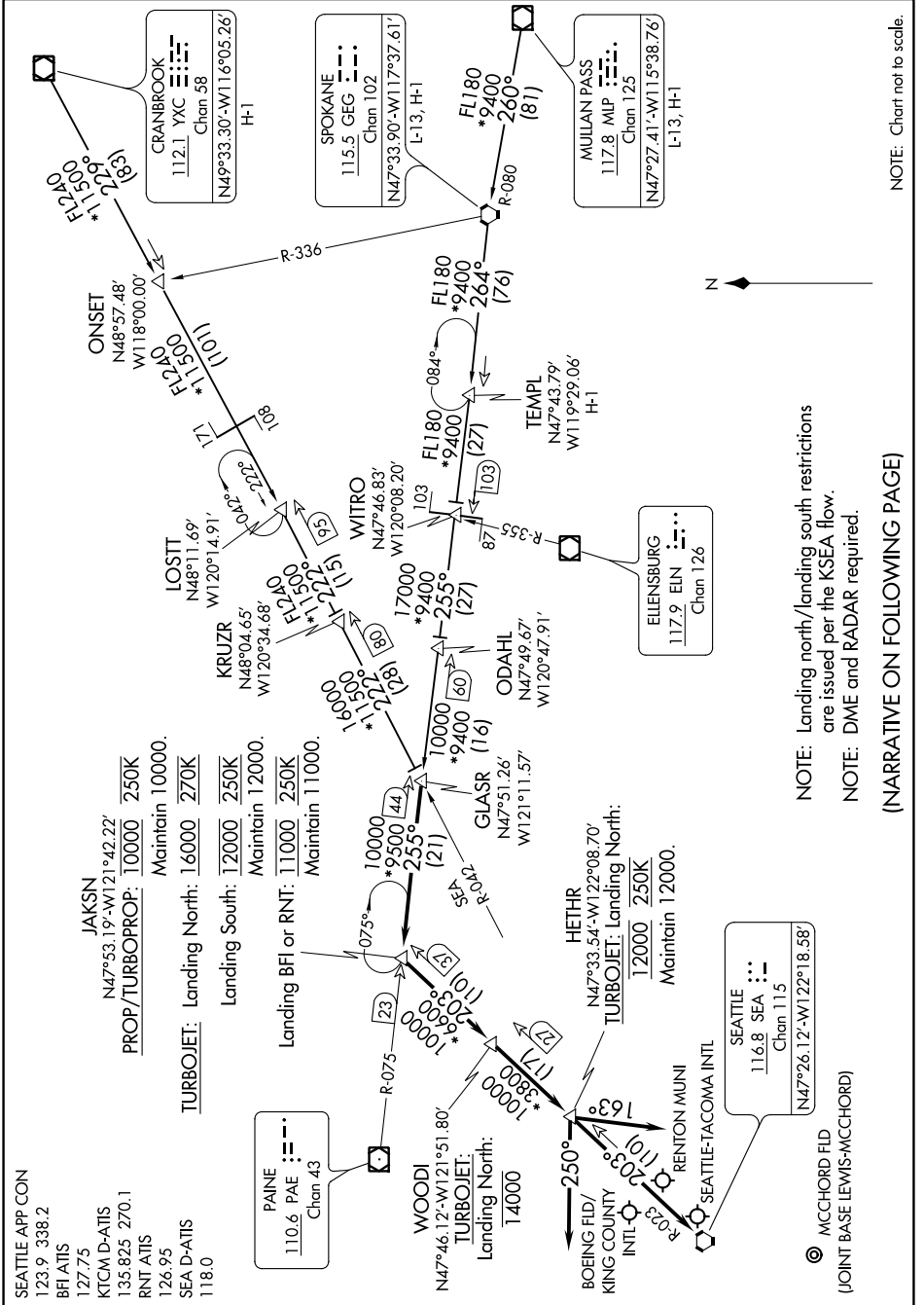


# GLASR TWO ARRIVAL

AL-582 (FAA)

SEATTLE, WASHINGTON

NW-1, 07 SEP 2023 to 05 OCT 2023



NOTE: Chart not to scale.

NOTE: Landing north/landing south restrictions are issued per the KSEA flow.  
NOTE: DME and RADAR required.

(NARRATIVE ON FOLLOWING PAGE)

NW-1, 07 SEP 2023 to 05 OCT 2023

# GLASR TWO ARRIVAL

SEATTLE, WASHINGTON