

HAROB SIX DEPARTURE (RNAV)

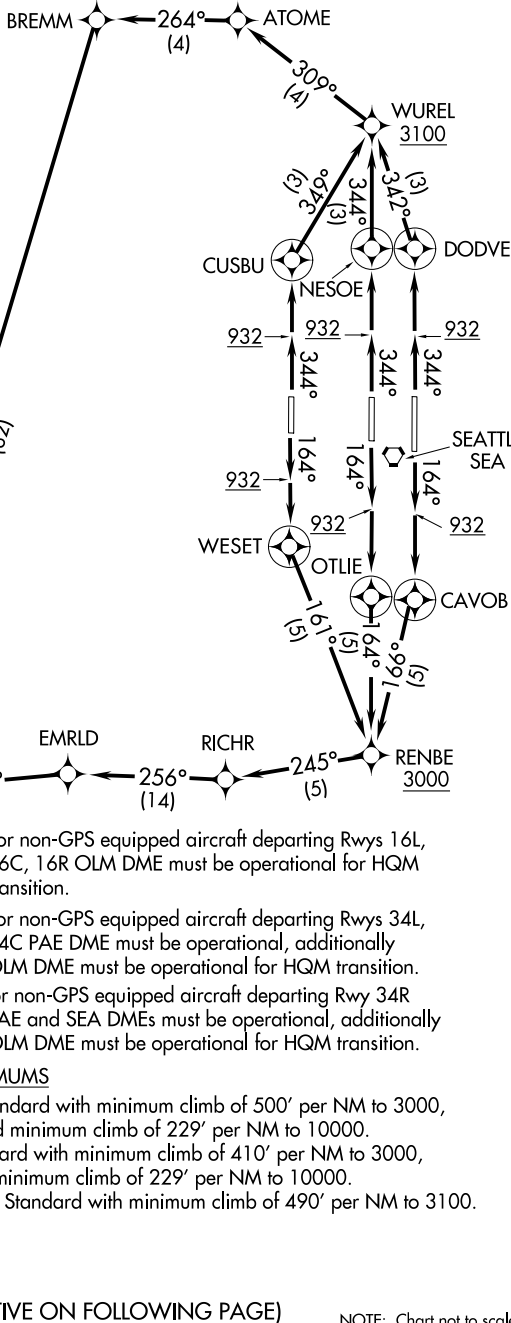
SEATTLE-TACOMA INTL (SEA)
SEATTLE, WASHINGTON

AL-582 (FAA)

D-ATIS
118.0
CLNC DEL
128.0
CPDLC
SEATTLE DEP CON
120.4 395.0

**TOP ALTITUDE:
ASSIGNED BY ATC**

NOTE: RNAV 1.
NOTE: RADAR required.
NOTE: DME/DME/IRU or GPS required.



NOTE: For non-GPS equipped aircraft departing Rwy 16L, 16C, 16R OLM DME must be operational for HQM transition.

NOTE: For non-GPS equipped aircraft departing Rwy 34L, 34C PAE DME must be operational, additionally OLM DME must be operational for HQM transition.

NOTE: For non-GPS equipped aircraft departing Rwy 34R PAE and SEA DMEs must be operational, additionally OLM DME must be operational for HQM transition.

TAKEOFF MINIMUMS

- Rwy 16L/R: Standard with minimum climb of 500' per NM to 3000, and minimum climb of 229' per NM to 10000.
- Rwy 16C: Standard with minimum climb of 410' per NM to 3000, and minimum climb of 229' per NM to 10000.
- Rwys 34L/C/R: Standard with minimum climb of 490' per NM to 3100.

(NARRATIVE ON FOLLOWING PAGE)

NOTE: Chart not to scale.

HAROB SIX DEPARTURE (RNAV)

SEATTLE, WASHINGTON
SEATTLE-TACOMA INTL (SEA)

NW-1, 07 SEP 2023 to 05 OCT 2023

NW-1, 07 SEP 2023 to 05 OCT 2023