

LOC/DME I-SZI 111.7 Chan 54	APP CRS 164°	Rwy Idg 9426 TDZE 430 Apt Elev 432
---	------------------------	---

ILS RWY 16C (SA CAT I)

SEATTLE-TACOMA INTL (SEA)

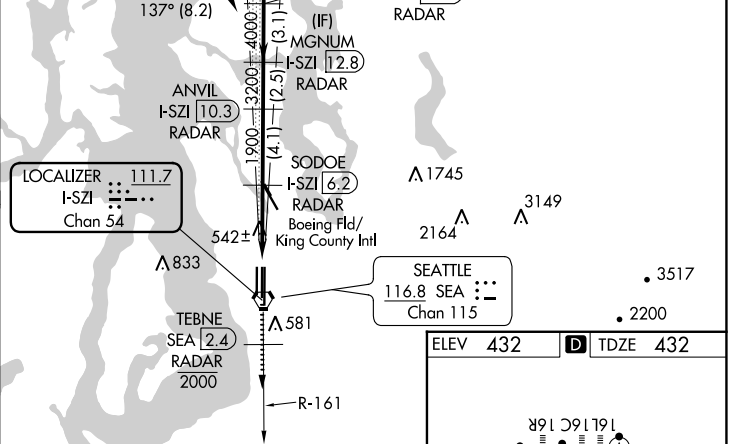
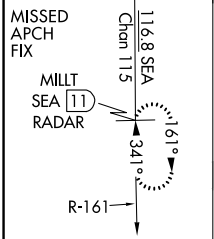
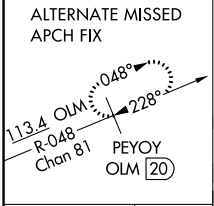
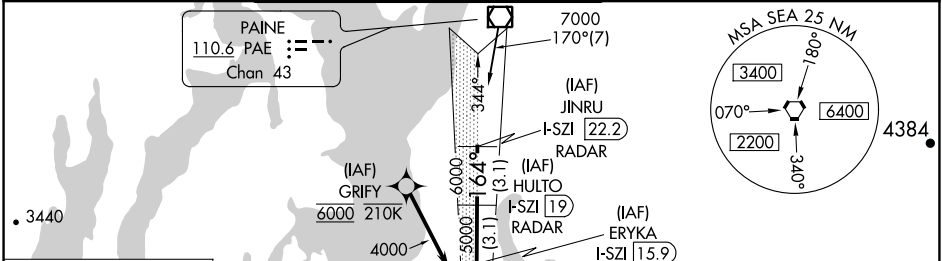
DME or RADAR required. From GRIFY: RNAV 1-GPS required.

Simultaneous approach authorized with Rwy 16R. Simultaneous operations require use of vertical guidance, maintain last assigned altitude until established on glideslope. Requires specific OPSPEC, MSPEC or LOA approval and use of HUD to DH.



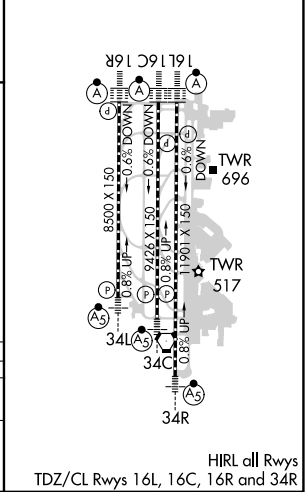
MISSED APPROACH: Climb on heading 160° and SEA VORTAC R-161 to cross TEBNE/SEA 2.4 DME/RADAR at or below 2000, then climb to 5000 on SEA VORTAC R-161 to MILLT/SEA 11 DME/RADAR and hold, continue climb-in-hold to 5000.

D-ATIS 118.0	SEATTLE APP CON 133.65 273.45	SEATTLE TOWER 119.9 239.3 (Rwys 16L, 16C, 34C, 34R) 120.95 239.3 (Rwys 16R, 34L)	GND CON 121.7	CLNC DEL 128.0	CPDLC
------------------------	---	--	-------------------------	--------------------------	-------



SEA R-161 hdg 160°	TEBNE SEA 2.4 2000	5000 SEA 11	VGSI and ILS glidepath not coincident (VGSI Angle 3.00/TCH 71).			
	SODOE I-SZI 6.2 RADAR	ANVIL I-SZI 10.3 RADAR	MGNM I-SZI 12.8 RADAR	ERYKA I-SZI 15.9 RADAR	HULTO I-SZI 19 RADAR	JINRU I-SZI 22.2 RADAR
	1900	3200	4000	5000	6000	7000
	1.20°	4.4 NM	4.1 NM	2.5 NM	3.1 NM	3.1 NM
CATEGORY	A	B	C	D		
S-ILS 16C	RA 292/14 150 DA 580					

ELEV 432	TDZE 432
----------	----------



SA CATEGORY I ILS - SPECIAL AIRCREW & AIRCRAFT CERTIFICATION REQUIRED

NW-1, 07 SEP 2023 to 05 OCT 2023

NW-1, 07 SEP 2023 to 05 OCT 2023