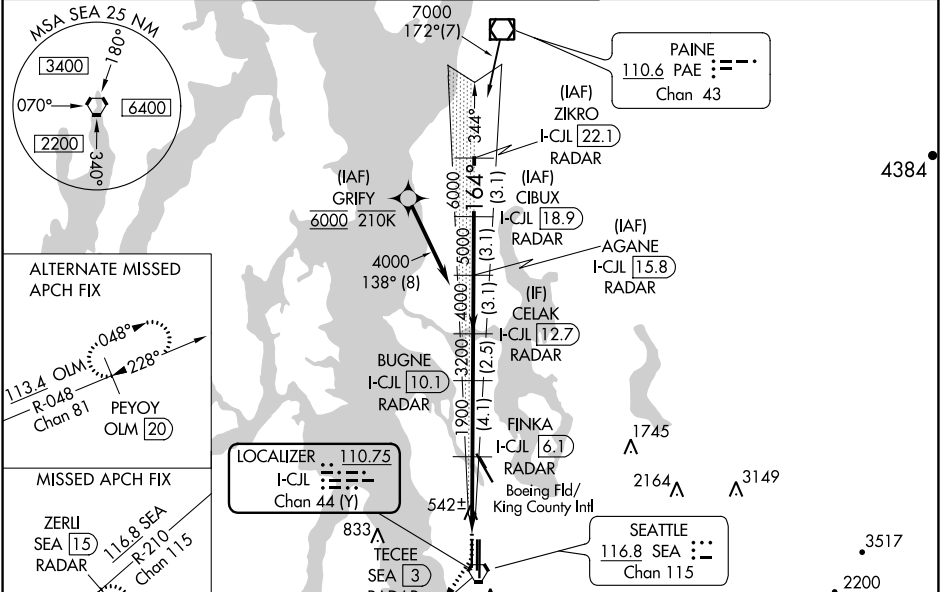


LOC/DME I-CJL 110.75 Chan 44 (Y)	APP CRS 164°	Rwy Idg TDZE Apt Elev	8500 415 432
---	------------------------	-----------------------------	---

ILS RWY 16R (CAT II & III)
SEATTLE-TACOMA INTL (SEA)

DME or RADAR required. From GRIFY: RNAV 1-GPS required.	ALSF-2 	MISSED APPROACH: Climb to 900 then climb on heading 195° and on SEA VORTAC R-210 to cross TECEE/SEA 3 DME/RADAR at or below 2000 then climb to 5000 on SEA VORTAC R-210 to ZERLI/SEA 15 DME/RADAR and hold, continue climb-in-hold to 5000.
---	------------	---

D-ATIS 118.0	SEATTLE APP CON 133.65 273.45	SEATTLE TOWER 119.9 239.3 (Rwys 16L, 16C, 34C, 34R) 120.95 239.3 (Rwys 16R, 34L)	GND CON 121.7	CLNC DEL 128.0	CPDLC
------------------------	---	--	-------------------------	--------------------------	-------



NW-1, 07 SEP 2023 to 05 OCT 2023

NW-1, 07 SEP 2023 to 05 OCT 2023

900	hdg 195° SEA R-210	TECEE SEA 3 2000	5000 SEA R-210	ZERLI SEA 15	VGSI and ILS glidepath not coincident (VGSI Angle 3.00/TCH 69).	
FINKA I-CJL 6.1 RADAR		BUGNE I-CJL 10.1 RADAR	CELAK I-CJL 12.7 RADAR	AGANE I-CJL 15.8 RADAR	I-CJL 18.9 RADAR	ZIKRO I-CJL 22.1 RADAR
1900		3200	4000	5000	7000	
11.48'		4.5 NM	4.1 NM	2.5 NM	3.1 NM	3.1 NM
CATEGORY	A	B	C	D		
S-ILS 16R	CAT II RA 139/12 100 DA 515					
S-ILS 16R	CAT III RVR 03					
CATEGORY II & III ILS - SPECIAL AIRCREW & AIRCRAFT CERTIFICATION REQUIRED						

Vertical Approach Diagram: 89, 99, 169, 199, 5000 x 1.50, 9426 x 1.50, 150 x 1.061, 34L, 34C, 34R. Vertical speeds: 0.8% UP, 0.6% DOWN, 0.6% DOWN, 0.8% UP.