

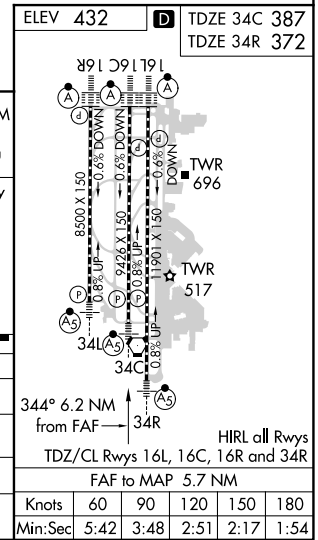
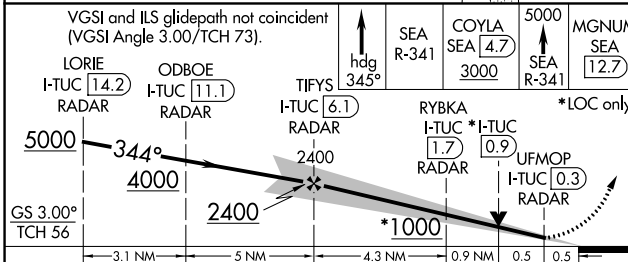
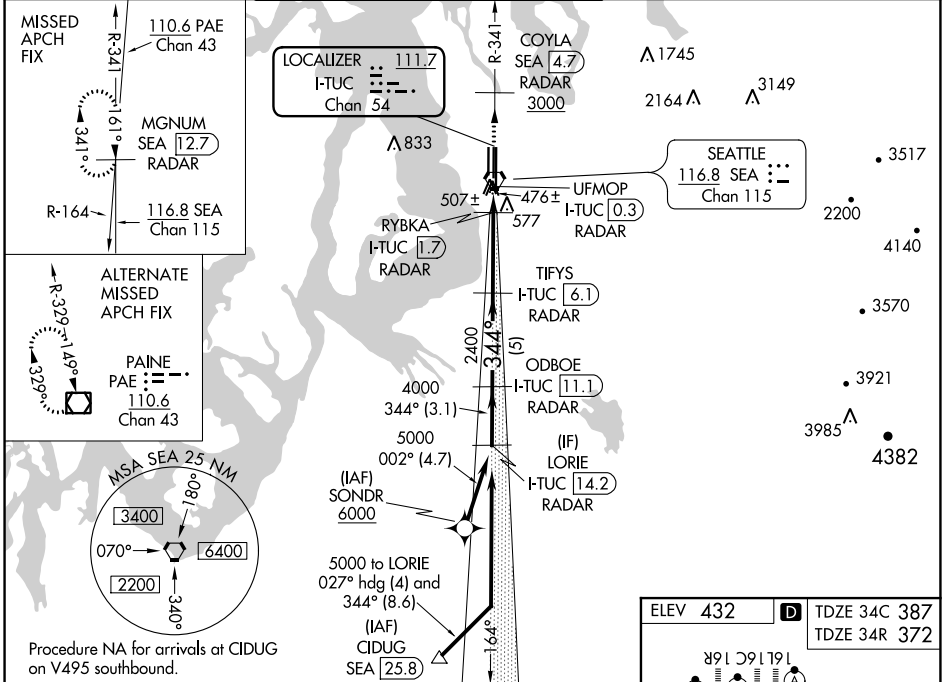
LOC/DME I-TUC 111.7 Chan 54	APP CRS 344°	Rwy Idg TDZE Apt Elev	34C 9426 387 432	34R 11901 372 432
---	------------------------	-----------------------------	--	---

ILS or LOC RWY 34C

SEATTLE-TACOMA INTL (SEA)

DME or RADAR required. From SONDR: RNAV 1-GPS required.	MALSR Rwy 34C/R	MISSED APPROACH: Climb on heading 345° and outbound on SEA VORTAC R-341 to cross COYLA/SEA 4.7 DME/RADAR at or above 3000 then climb to 5000 on SEA VORTAC R-341 to MGNUM/SEA 12.7 DME/RADAR and hold, continue climb-in-hold to 5000.
▼ Inop table does not apply to ALS Rwy 34R. Simultaneous approach authorized with Rwy 34L.		

D-ATIS 118.0	SEATTLE APP CON 133.65 273.45	SEATTLE TOWER 119.9 239.3 (Rwys 16L, 16C, 34C, 34R) 120.95 239.3 (Rwys 16R, 34L)	GND CON 121.7	CLNC DEL 128.0	CPDLC
------------------------	---	--	-------------------------	--------------------------	-------



VGSI and ILS glidepath not coincident (VGSI Angle 3.00/TCH 73).	↑ hdg 345°	SEA R-341	COYLA SEA 4.7	5000	MGNUM SEA 12.7
LORIE I-TUC 14.2 RADAR	ODBOE I-TUC 11.1 RADAR	TIFYS I-TUC 6.1 RADAR	RYBKA I-TUC 1.7 RADAR	UFMOP I-TUC 0.3 RADAR	*LOC only
5000	344°	4000	2400	*1000	
GS 3.00° TCH 56	3.1 NM	5 NM	4.3 NM	0.9 NM	0.5 NM
CATEGORY	A	B	C	D	
S-ILS 34C	604/24		217 (200-½)		
S-LOC 34C	760/24	373 (400-½)	760/35	373 (400-⅝)	
SIDESTEP 34R	760/50	388 (400-1)	760/60	388 (400-1¼)	
CIRCLING	1000-1	568 (600-1)	1000-1½	568 (600-2)	

NW-1, 07 SEP 2023 to 05 OCT 2023

NW-1, 07 SEP 2023 to 05 OCT 2023

ELEV 432	TDZE 34C 387	TDZE 34R 372			
HIRL all Rwys					
TDZ/CL Rwys 16L, 16C, 16R and 34R					
FAF to MAP 5.7 NM					
Knots	60	90	120	150	180
Min:Sec	5:42	3:48	2:51	2:17	1:54