

LOC/DME I-BEJ <b>110.75</b> Chan 44 (Y)	APP CRS <b>344°</b>	Rwy ldg TDZE <b>8500</b> <b>379</b> Apt Elev <b>433</b>
---	------------------------	---

# ILS or LOC RWY 34L

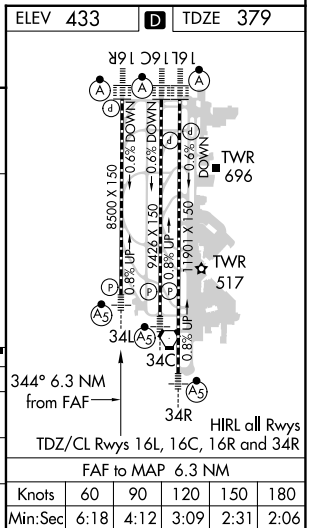
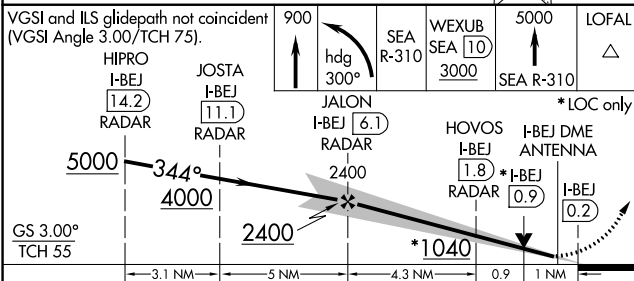
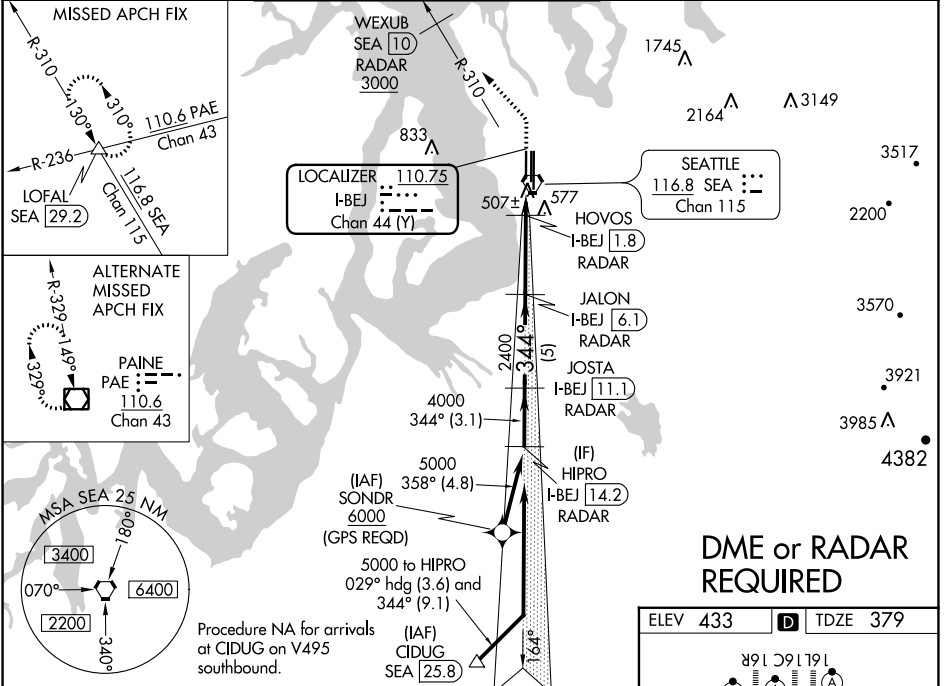
SEATTLE-TACOMA INTL (SEA)

**▼** DME or RADAR required.  
Simultaneous approach authorized with Rwy 34R/C.  
# RVR 1800 authorized with use of FD or AP or HUD to DA.

MALS R

MISSED APPROACH: Climb to 900 then climbing left turn on heading 300° and on SEA VORTAC R-310 to cross WEXUB/10 DME/RADAR at or above 3000, then climb to 5000 on SEA VORTAC R-310 to LOFAL/SEA 29.2 DME and hold.

D-ATIS <b>118.0</b>	SEATTLE APP CON <b>133.65 273.45</b>	SEATTLE TOWER <b>119.9 239.3</b> (Rwys 16L, 16C, 34C, 34R) <b>120.95 239.3</b> (Rwys 16R, 34L)	GND CON <b>121.7</b>	CLNC DEL <b>128.0</b>	CPDLC
------------------------	---	--	-------------------------	--------------------------	-------



CATEGORY	A	B	C	D
S-ILS 34L#	579/24 200 (200-½)			
S-LOC 34L	760/24	381 (400-½)	760/40	381 (400-¾)
CIRCLING	1000-1	567 (600-1)	1000-1½	1000-2
			567 (600-1½)	567 (600-2)

NW-1, 07 SEP 2023 to 05 OCT 2023

NW-1, 07 SEP 2023 to 05 OCT 2023