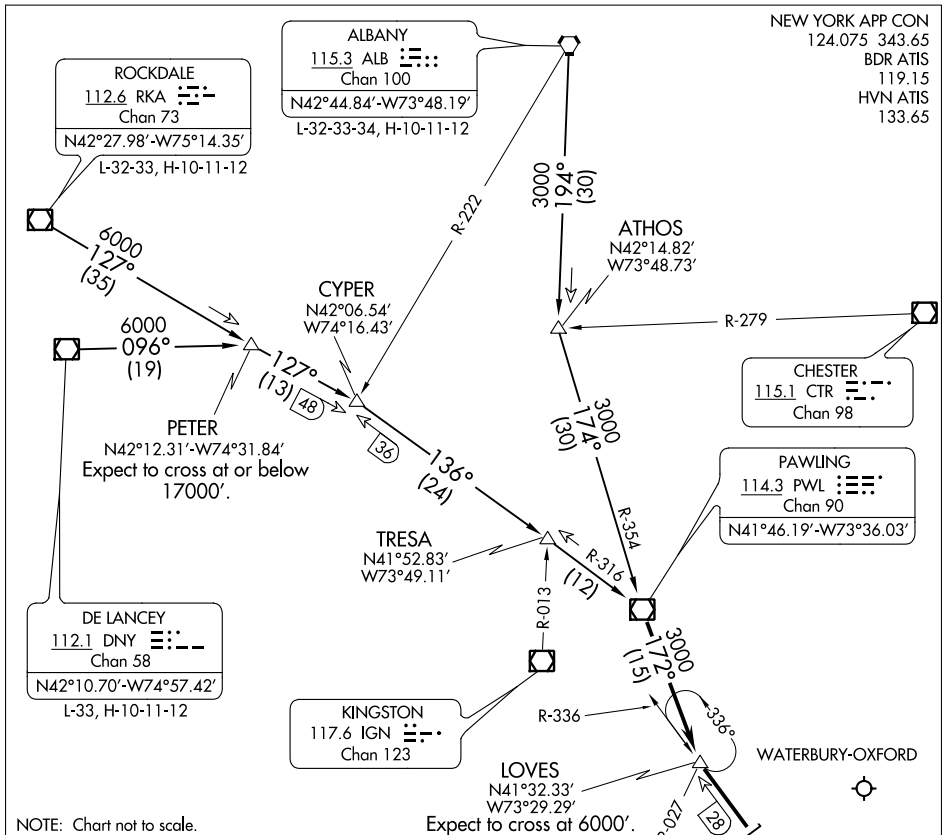


# BRIDGEPORT ONE ARRIVAL

AL-621 (FAA)

BRIDGEPORT, CONNECTICUT



NEW YORK APP CON  
124.075 343.65  
BDR ATIS  
119.15  
HVN ATIS  
133.65

ALBANY  
115.3 ALB  
Chan 100  
N42°44.84'-W73°48.19'  
L-32-33-34, H-10-11-12

ROCKDALE  
112.6 RKA  
Chan 73  
N42°27.98'-W75°14.35'  
L-32-33, H-10-11-12

ATHOS  
N42°14.82'  
W73°48.73'

CYPER  
N42°06.54'  
W74°16.43'

CHESTER  
115.1 CTR  
Chan 98

PETER  
N42°12.31'-W74°31.84'  
Expect to cross at or below  
17000'.

PAWLING  
114.3 PWL  
Chan 90  
N41°46.19'-W73°36.03'

DE LANCEY  
112.1 DNY  
Chan 58  
N42°10.70'-W74°57.42'  
L-33, H-10-11-12

KINGSTON  
117.6 IGN  
Chan 123

TRESA  
N41°52.83'  
W73°49.11'

LOVES  
N41°32.33'  
W73°29.29'  
Expect to cross at 6000'.

WATERBURY-OXFORD

TWEED/  
NEW HAVEN

CARMEL  
116.6 CMK  
Chan 113

BRIDGEPORT/  
SIKORSKY

BRIDGEPORT  
108.8 BDR  
Chan 25

NOTE: Chart not to scale.

## ARRIVAL DESCRIPTION

**ALBANY TRANSITION (ALB.BDR1):** From over ALB VORTAC via ALB R-194 to ATHOS INT, then via PWL R-354 to PWL VOR/DME. Thence . . .

**DELANCEY TRANSITION (DNY.BDR1):** From over DNY VOR/DME via DNY R-096 to PETER INT, then via RKA R-127 to CYPER INT, then via PWL R-316 to PWL VOR/DME. Thence . . .

**ROCKDALE TRANSITION (RKA.BDR1):** From over RKA VOR/DME via RKA R-127 to CYPER INT, then via PWL R-316 to PWL VOR/DME. Thence . . .

. . . From over PWL VOR/DME via PWL R-172 to LOVES INT. Then via BDR R-336 to DENNA INT. Expect radar vectors to the final approach course.

NOTE: This procedure applicable to jet aircraft only.

# BRIDGEPORT ONE ARRIVAL

NE-1, 07 SEP 2023 to 05 OCT 2023

NE-1, 07 SEP 2023 to 05 OCT 2023