

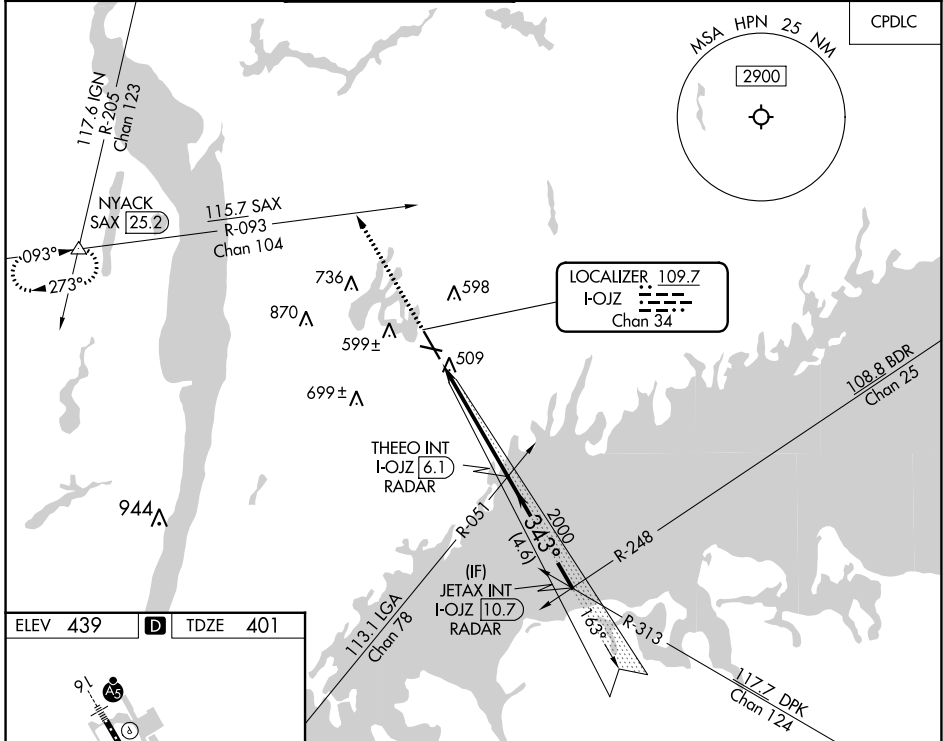
LOC/DME I-OJZ <b>109.7</b> Chan <b>34</b>	APP CRS <b>343°</b>	Rwy Idg <b>6549</b> TDZE <b>401</b> Apt Elev <b>439</b>
---	------------------------	---

# ILS or LOC RWY 34

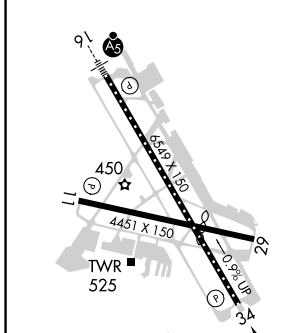
WESTCHESTER COUNTY (HPN)

RADAR required for procedure entry.		MISSED APPROACH: Climb to 3000 on heading 343° and SAX R-093 to NYACK INT/SAX 25.2 DME and hold.				
<p><b>▼</b> Circling Rwy 11, 29 NA at night.</p> <p><b>▲</b> Rwy 34 helicopter visibility reduction below ¾ SM NA.</p>						

D-ATIS <b>133.8</b>	NEW YORK APP CON <b>120.8 126.4 257.65</b>	WESTCHESTER TOWER ★ <b>118.575</b> (CTAF) <b>284.65</b>	GND CON <b>121.825</b>	CLNC DEL <b>127.25</b>	CLNC DEL <b>126.4</b> (when twr closed)	UNICOM <b>122.95</b>
------------------------	---	--	---------------------------	---------------------------	---	-------------------------



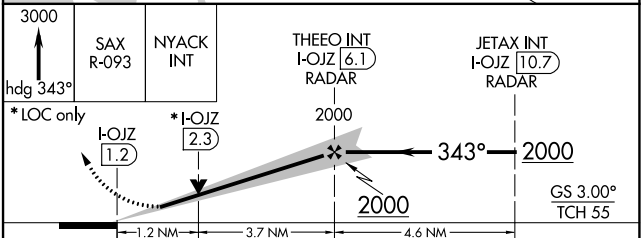
ELEV <b>439</b>	<b>D</b>	TDZE <b>401</b>
-----------------	----------	-----------------



REIL Rws 11 and 34 **Ⓢ**  
 HIRL Rwy 16-34 **Ⓢ**  
 MIRL Rwy 11-29 **Ⓢ**  
 TDZ/CL Rwy 16 **Ⓢ**

FAF to MAP 4.9 NM

Knots	60	90	120	150	180
Min:Sec	4:54	3:16	2:27	1:58	1:38



CATEGORY	A		B		C		D	
S-ILS 34	742/60				341 (400-1¼)			
S-LOC 34	800/55		399 (400-1)		800/60		399 (400-1¼)	
<b>☑</b> CIRCLING	980-1		541 (600-1)		1080-1¾ 641 (700-1¾)		1200-2½ 761 (800-2½)	

NE-2, 07 SEP 2023 to 05 OCT 2023

NE-2, 07 SEP 2023 to 05 OCT 2023