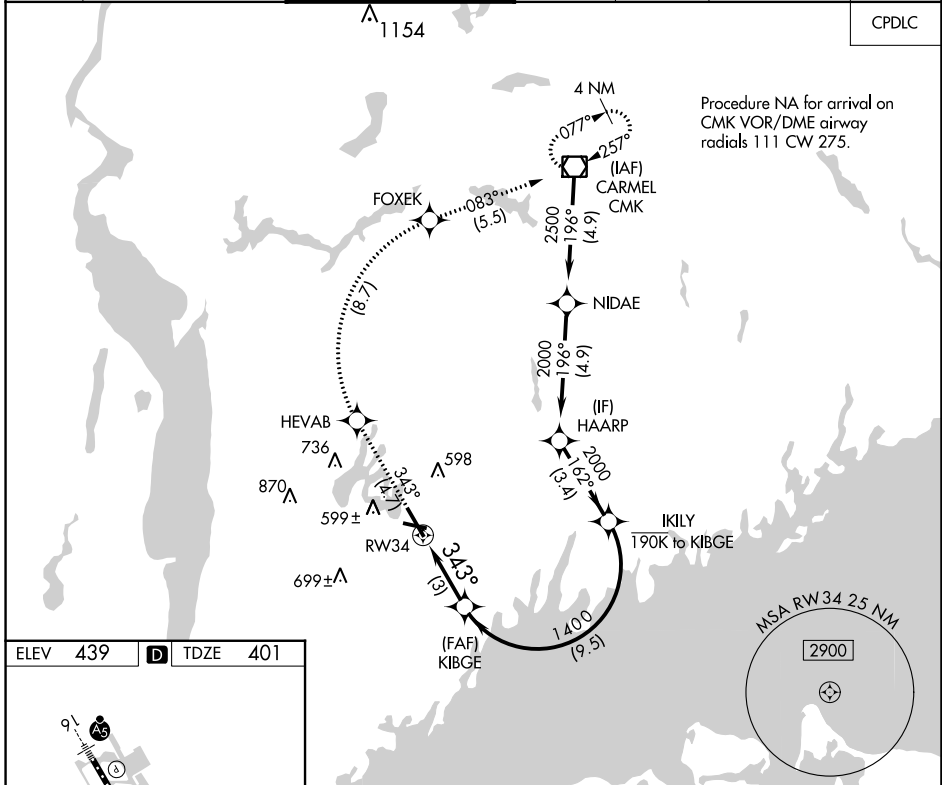


APP CRS <b>343°</b>	Rwy Idg <b>6549</b>
	TDZE <b>401</b>
	Apt Elev <b>439</b>

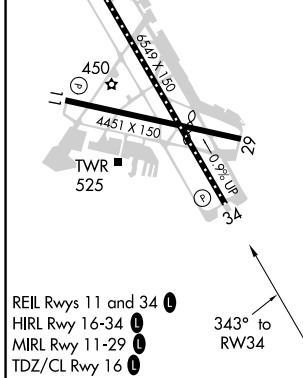
# RNAV (RNP) Z RWY 34

WESTCHESTER COUNTY (HPN)

<p><b>▼</b> For uncompensated Baro-VNAV systems, procedure NA below -14°C (7°F) or above 54°C (130°F). RF required. GPS required.</p>		<p>MISSED APPROACH: Climb to 3000 on track 343° to HEVAB, right turn to FOXEK, then on track 083° to CMK VOR/DME and hold.</p>				
D-ATIS <b>133.8</b>	NEW YORK APP CON <b>120.8 126.4 257.65</b>	WESTCHESTER TOWER ★ <b>118.575 (CTAF) 0 284.65</b>	GND CON <b>121.825</b>	CLNC DEL <b>127.25</b>	CLNC DEL <b>126.4</b> (when twr closed)	UNICOM <b>122.95</b>



Procedure NA for arrival on CMK VOR/DME airway radials 111 CW 275.



3000	tr 343°	HEVAB	FOXEK	tr 083°	CMK	VGSI and RNAV glidepath not coincident (VGSI Angle 3.00/TCH 56).
			KIBGE	IKILY	HAARP	
			1400	162°	2000	
				2000		GP 3.00° TCH 60
			3 NM	9.5 NM	3.4 NM	
CATEGORY	A	B	C	D		
RNP 0.30 DA		788-1 $\frac{3}{8}$	387 (400-1 $\frac{3}{8}$ )			

**AUTHORIZATION REQUIRED**

NE-2, 07 SEP 2023 to 05 OCT 2023

NE-2, 07 SEP 2023 to 05 OCT 2023