

WAAS CH <b>87014</b> <b>W32A</b>	APP CRS <b>321°</b>	Rwy Idg <b>6007</b> TDZE <b>63</b> Apt Elev <b>64</b>
--	------------------------	---

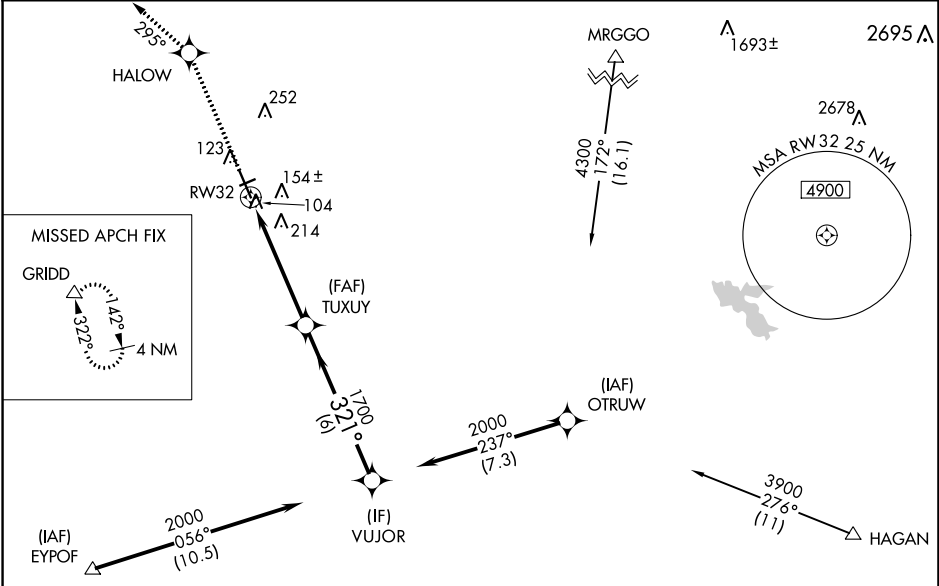
# RNAV (GPS) RWY 32

YUBA COUNTY (MYV)

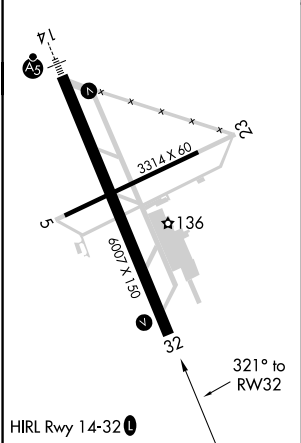
▼ For uncompensated Baro-VNAV systems, LNAV/VNAV NA below -1.5°C (5°F) or above 54°C (130°F). DME/DME RNP-0.3 NA. When local altimeter setting not received, use Lincoln altimeter setting and increase LPV DA to 357 feet, LNAV/VNAV DA to 418 feet and all MDA 60 feet; increase LPV and LNAV/VNAV all Cats visibility 1/8 mile, LNAV Cats C/D visibility 1/4 mile. Night landing: Rwy 5, 23 NA. Baro-VNAV and VDP NA when using Lincoln altimeter setting.

MISSED APPROACH: Climb to 4000 direct HALOW and via track 295° to GRIDD and hold.

ASOS <b>118.475</b>	NORCAL APP CON <b>125.4 259.1</b>	UNICOM <b>123.05 (CTAF) 0</b>
------------------------	--------------------------------------	----------------------------------



ELEV 64	TDZE 63
---------	---------



4000	HALOW	tr 295°	GRIDD	*LNAV only	VUJOR	Procedure Turn NA
					2000	
					1700	
						GP 3.00° TCH 32
CATEGORY	A	B	C	D		
LPV DA	313-7/8		250 (300-7/8)			
LNAV/VNAV DA	374-1 1/8		311 (400-1 1/8)			
LNAV MDA	480-1	417 (500-1)	480-1 1/8	417 (500-1 1/8)		
CIRCLING	540-1	476 (500-1)	540-1 1/2	620-2		
			476 (500-1 1/2)	556 (600-2)		

SW-2, 07 SEP 2023 to 05 OCT 2023

SW-2, 07 SEP 2023 to 05 OCT 2023