

WAAS CH 86299 W25A	APP CRS 256°	Rwy Idg 5500 TDZE 44 Apt Elev 45
--	------------------------	---

RNAV (GPS) RWY 25

OXNARD (OXR)

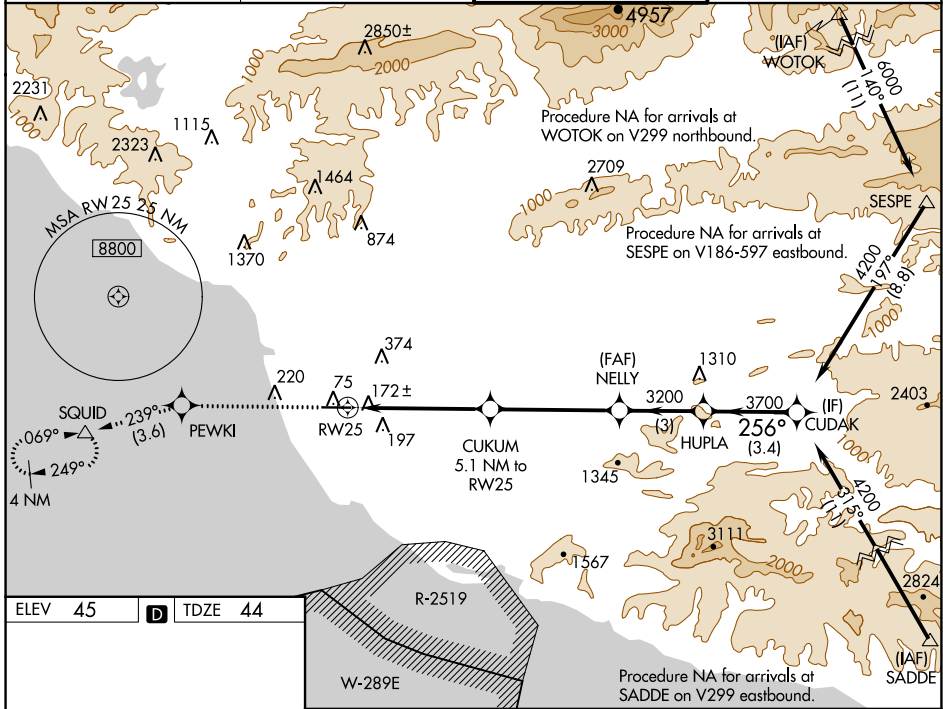
RNP APCH-GPS.

⚠ Inoperative table does not apply. Baro-VNAV NA when using Camarillo altimeter setting. For uncompensated Baro-VNAV systems, LNAV/VNAV NA below -15°C or above 43°C. When local altimeter setting not received, use Camarillo altimeter setting and increase LPV DA to 312 feet, increase LNAV/VNAV DA to 351 feet; increase all MDAs 20 feet and Circling Cat C visibility ¼ SM.

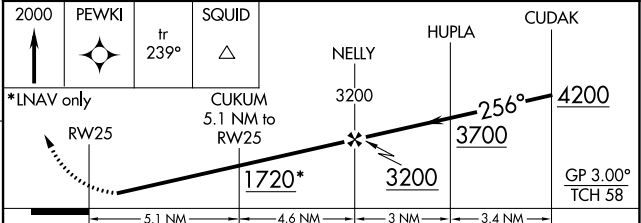
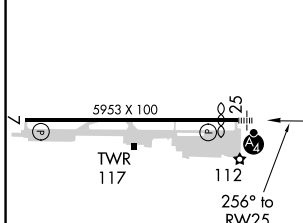
MALSF

MISSED APPROACH: Climb to 2000 direct PEWKI and on track 239° to SQUID and hold.

ATIS 118.05	POINT MUGU APP CON* 124.7 335.5	OXNARD TOWER* 134.95 (CTAF) 0 257.8	GND CON 121.9
-----------------------	---	---	-------------------------



ELEV 45	D	TDZE 44
---------	----------	---------



CATEGORY	A	B	C	D
LPV DA	294-1 250 (300-1)			
LNAV/VNAV DA	333-1 289 (300-1)			
LNAV MDA	520-1	476 (500-1)	520-1 ³ / ₈	476 (500-1 ³ / ₈)
CIRCLING	520-1	475 (500-1)	700-1 ³ / ₄ 655 (700-1 ³ / ₄)	760-2 ¹ / ₄ 715 (800-2 ¹ / ₄)

SW-3, 07 SEP 2023 to 05 OCT 2023

SW-3, 07 SEP 2023 to 05 OCT 2023