

NDB RWY 23

NDB FK 273	APCH CRS 225°	Rwy ldg 10,926 TDZE 571 Arprt Elev 571
----------------------	-------------------------	----------------------------------------------------------------------------

AL-679 [USA]

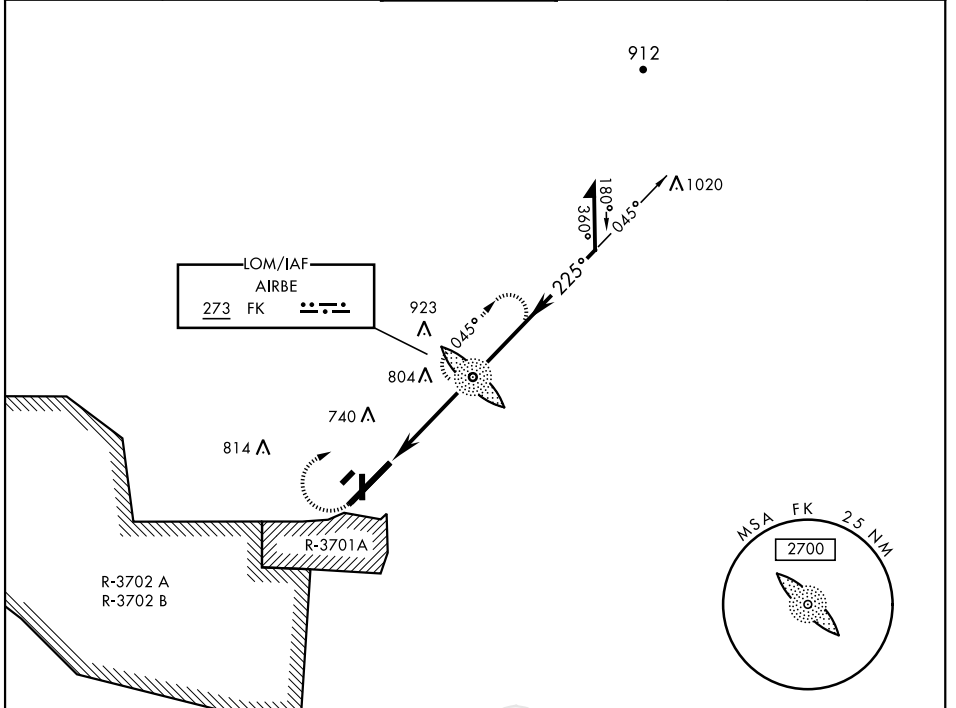
CAMPBELL AAF (KHOP)

RADAR required
 ▼ * When ALS inop, increase CAT AB RVR to 55, vis to 1mile; CAT CD vis to 1½ miles.
 ** Circling not authorized SE of Rwy 5-23.



MISSED APPROACH: Climb to 1200, then climbing right turn to 2500 direct to FK LOM and continue climb-in-hold (max 230 KIAS).

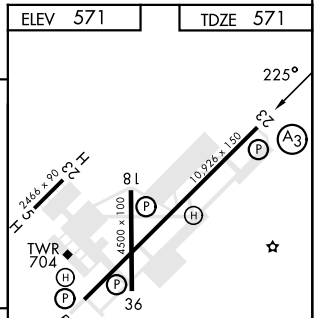
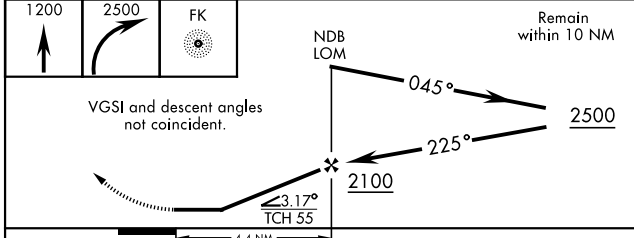
ATIS 125.175 308.4	APP CON 118.1 269.525	TOWER 120.9 278.8	GND CON 121.8 266.8	CLNC DEL 138.8	ASR/PAR
------------------------------	---------------------------------	-----------------------------	-------------------------------	--------------------------	---------



SE-1, 07 SEP 2023 to 05 OCT 2023

SE-1, 07 SEP 2023 to 05 OCT 2023

ELEV 571	TDZE 571
----------	----------



CATEGORY	A		B		C		D		
	S-23*	1120/40	549	(600-¾)	1120/60	549	(600-1½)		
CIRCLING**	1120-1	549	(600-1)	1120-1½	549	(600-1½)	1140-2	569	(600-2)

HIRL all Rwy					
FAF to MAP 4.4 NM					
Knots	60	90	120	150	180
Min:Sec	4:24	2:56	2:12	1:46	1:28

NDB RWY 23