

RNAV (GPS) RWY 18

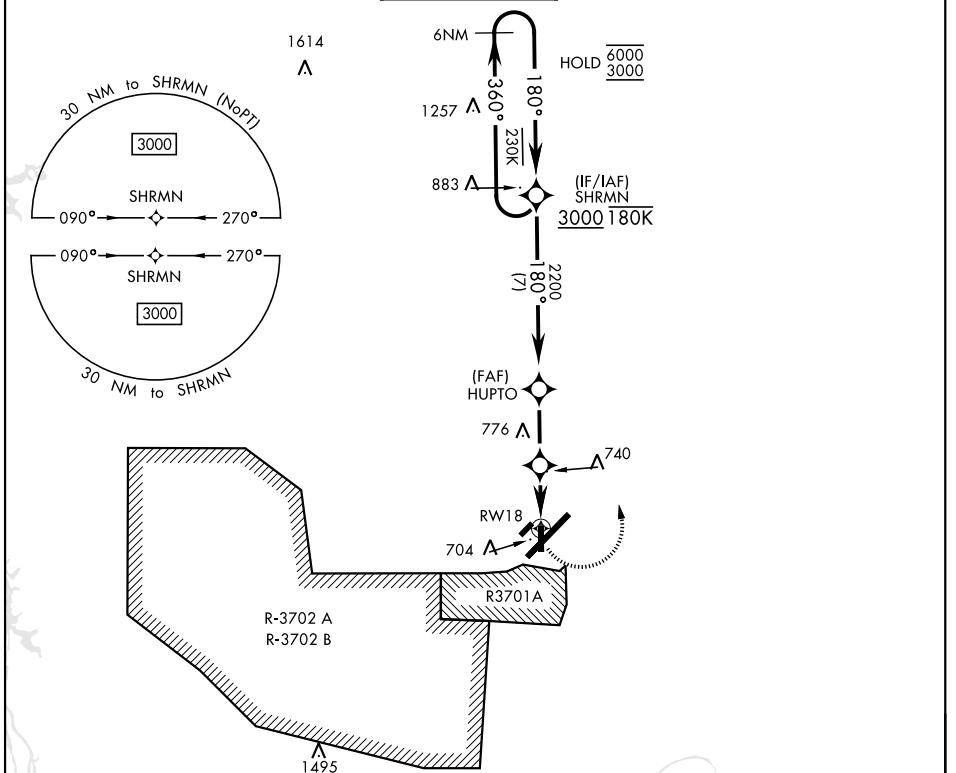
APCH CRS	Rwy Idg	4500
180°	TDZE	562
	Arprt Elev	571

AL-679 [USA]

CAMPBELL AAF (KHOP)

RNAV1 - GPS.		MISSED APPROACH: Climbing left turn to 3000 direct SHRMN and hold.
DME required.		
▼ * Circling NA SE of RWY 5-23.		

ATIS	APP CON	TOWER	GND CON	CLNC DEL	ASR/PAR
125.175 308.4	118.1 269.525	120.9 278.8	121.8 266.8	138.8	



6 NM Holding Pattern		VGSi and RNAV glidepath not coincident (VGSi Angle 3.00°/TCH 50).		ELEV 571	TDZE 562
CATEGORY	A	B	C	D	
LNVA MDA	1080-1	518 (600-1)	1080-1 $\frac{3}{8}$ 518 (600-1 $\frac{3}{8}$)	NA	
CIRCLING*	1080-1	509 (600-1)	1080-1 $\frac{1}{2}$ 509 (600-1 $\frac{1}{2}$)	NA	

RNAV (GPS) RWY 18

SE-1, 07 SEP 2023 to 05 OCT 2023

SE-1, 07 SEP 2023 to 05 OCT 2023