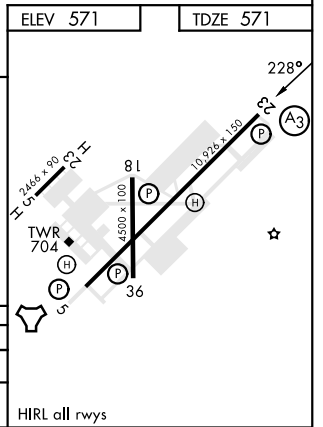
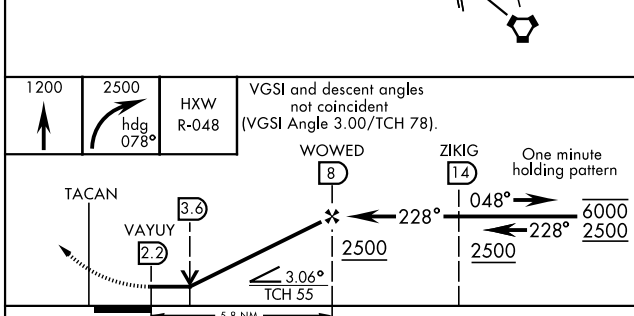
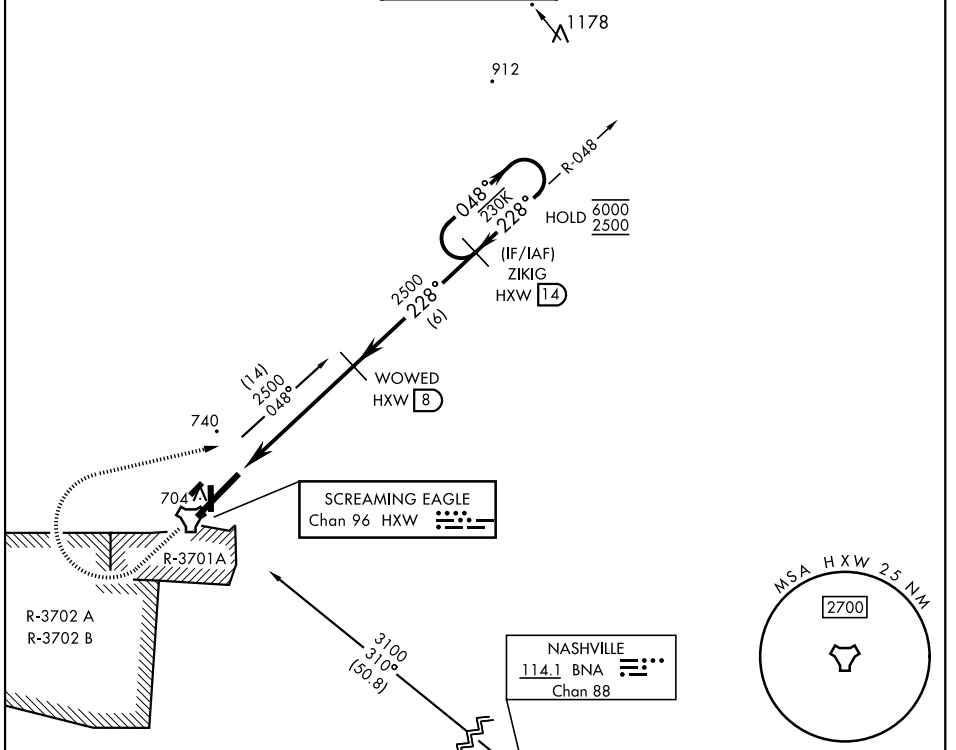


# TACAN RWY 23

TACAN HXW Chan <b>96</b>	APCH CRS <b>228°</b>	Rwy Idg <b>10,926</b> TDZE <b>571</b> Arprt Elev <b>571</b>	AL-679 [USA]	CAMPBELL AAF (KHOP)
▼ * When ALS inop, increase CAT AB RVR to 55, vis to 1 mile; CAT CDE vis to 1½ mile. ** Circling not authorized SE of Rwy 5-23.			SSALR (A3)	MISSED APPROACH: Climb to 1200 then climbing right turn to 2500 on hdg 078° and HXW TACAN R-048 to ZIKIG/HXW 14 DME and hold.

ATIS <b>125.175 308.4</b>	APP CON <b>118.1 269.525</b>	TOWER <b>120.9 278.8</b>	GND CON <b>121.8 266.8</b>	CLNC DEL <b>138.8</b>	ASR/PAR
------------------------------	---------------------------------	-----------------------------	-------------------------------	--------------------------	---------



CATEGORY	A	B	C	D	E
S-23 *	1080/24	509 (600-¾)	1080/55	509 (600-1¼)	
CIRCLING **	1080-1	509 (600-1)	1080-1½ 509 (600-1½)	1140-2	569 (600-2)

# TACAN RWY 23

SE-1, 07 SEP 2023 to 05 OCT 2023

SE-1, 07 SEP 2023 to 05 OCT 2023