

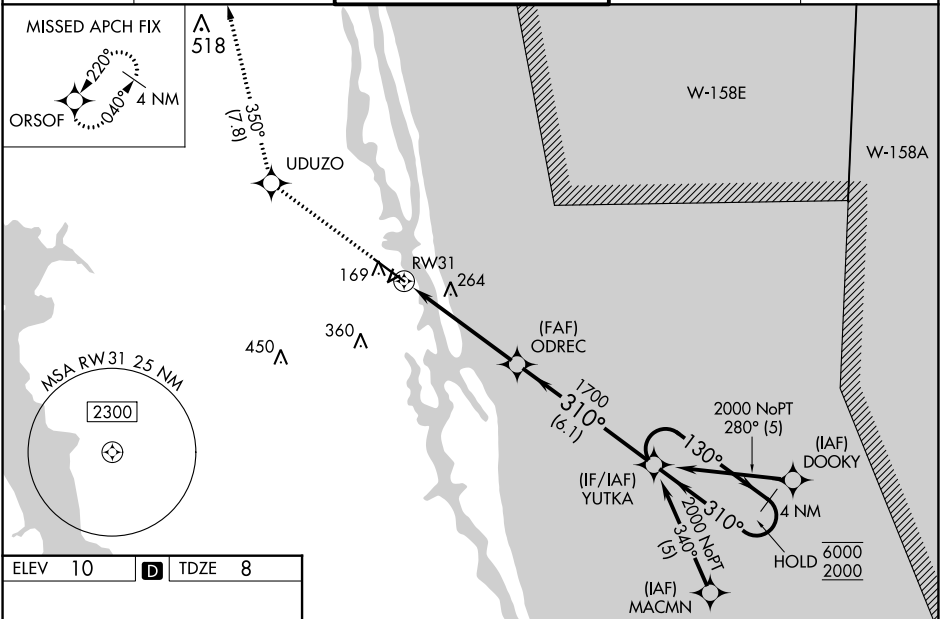
WAAS CH <b>77727</b> <b>W31A</b>	APP CRS <b>310°</b>	Rwy Idg <b>5925</b> TDZE <b>8</b> Apt Elev <b>10</b>
--	------------------------	--

# RNAV (GPS) RWY 31

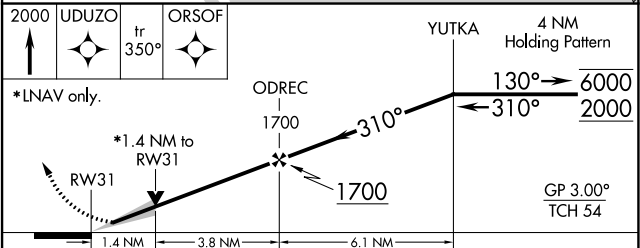
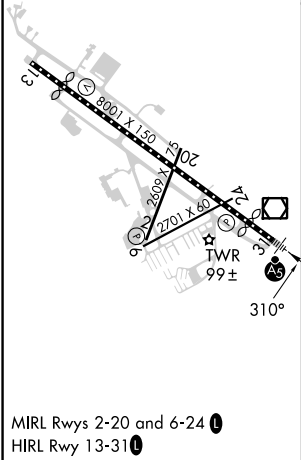
NORtheast Florida RGNL (SGJ)

<b>RNP APCH.</b> Circling Rwy 2, 6 NA at night. For uncompensated Baro-VNAV systems, LNAV/VNAV NA below -18°C or above 54°C. For inop ALS, increase LNAV/VNAV all Cats visibility to 7/8 SM and LNAV Cat C/D visibility to 1 3/8 SM.		<b>MALSR</b> 	<b>MISSED APPROACH:</b> Climb to 2000 direct UDUZO and on track 350° to ORSOF and hold.
---	--	------------------	---

<b>ATIS</b> <b>119.625</b>	<b>JACKSONVILLE APP CON</b> <b>120.75</b>	<b>ST AUGUSTINE TOWER ★</b> <b>127.625 (CTAF) 269.475</b>	<b>GND CON</b> <b>121.175 251.125</b>	<b>UNICOM</b> <b>122.95</b>
-------------------------------	--	--	--	--------------------------------



ELEV 10	<b>D</b>	TDZE 8
---------	----------	--------



CATEGORY	A	B	C	D
LPV DA		218-1/2	210 (300-1/2)	
LNAV/VNAV DA		292-1/2	284 (300-1/2)	
LNAV MDA	520-1/2	512 (600-1/2)	520-1	512 (600-1)
<b>C</b> CIRCLING	520-1 510 (600-1)	580-1 570 (600-1)	680-1 3/4 670 (700-1 3/4)	780-2 1/2 770 (800-2 1/2)

SE-3, 07 SEP 2023 to 05 OCT 2023

SE-3, 07 SEP 2023 to 05 OCT 2023