

WAAS CH 82623 W06A	APP CRS 061°	Rwy Idg 6401 TDZE 1152 Apt Elev 1190
--	------------------------	---

RNAV (GPS) RWY 6

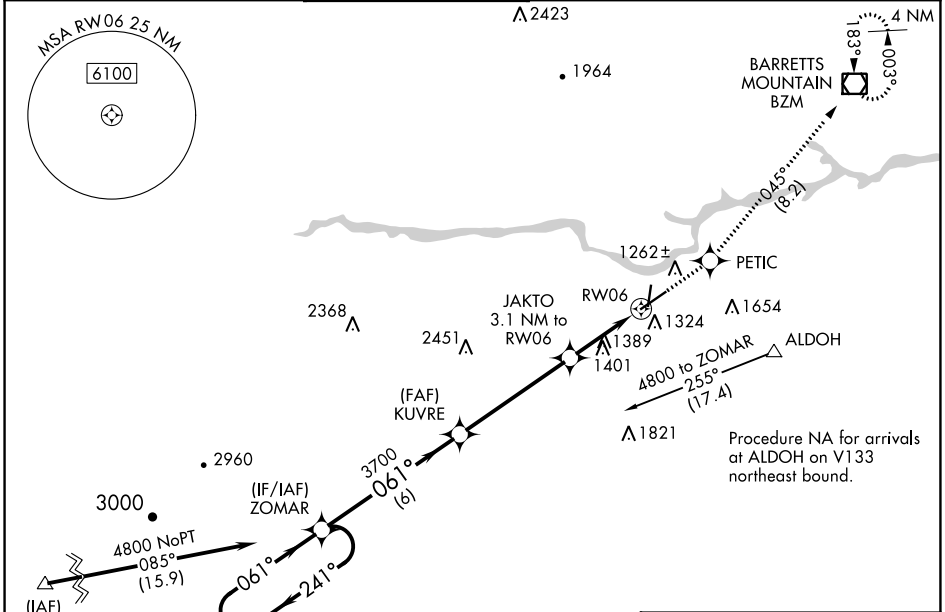
HICKORY RGNL (HKY)

RNP APCH-GPS.

- When local altimeter setting not received, use Morganton altimeter setting and increase all MDA 40 feet. When VGSi inop, Straight-in/Circling Rwy 6 procedure NA at night. When VGSi inop, Circling Rwy 1 and 19 NA at night.

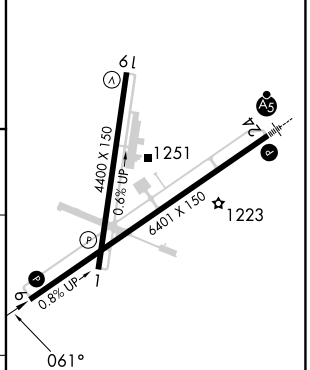
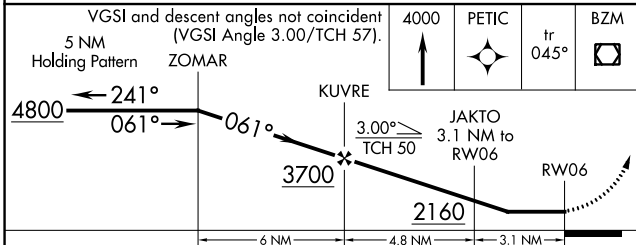
MISSED APPROACH: Climb to 4000 direct PETIC and on track 045° to BZM VOR/DME and hold.

ASOS 118.325	ATLANTA CENTER 125.15 263.0	HICKORY TOWER ★ 128.15 (CTAF) 0	GND CON 121.7	CLNC DEL 121.7	CLNC DEL 124.25 (When twr closed)
------------------------	---------------------------------------	---	-------------------------	--------------------------	--



Procedure NA for arrivals at GENOD on V20-222 southwest bound and V605 southbound.

ELEV 1190	D	TDZE 1152
-----------	----------	-----------



CATEGORY	A	B	C	D
LP MDA	1600-1	448 (500-1)	1600-1 ³ / ₈	448 (500-1 ³ / ₈)
LNAV MDA	1740-1	588 (600-1)	1740-1 ³ / ₄	588 (600-1 ³ / ₄)
CIRCLING	1740-1	550 (600-1)	2020-2 ¹ / ₂ 830 (900-2 ¹ / ₂)	2040-2 ³ / ₄ 850 (900-2 ³ / ₄)

- HIRL Rwy 6-24 **0**
- MIRL Rwy 1-19 **0**
- REIL Rwy 1 **0**
- REIL Rwy 6 and 19

SE-2, 07 SEP 2023 to 05 OCT 2023

SE-2, 07 SEP 2023 to 05 OCT 2023