


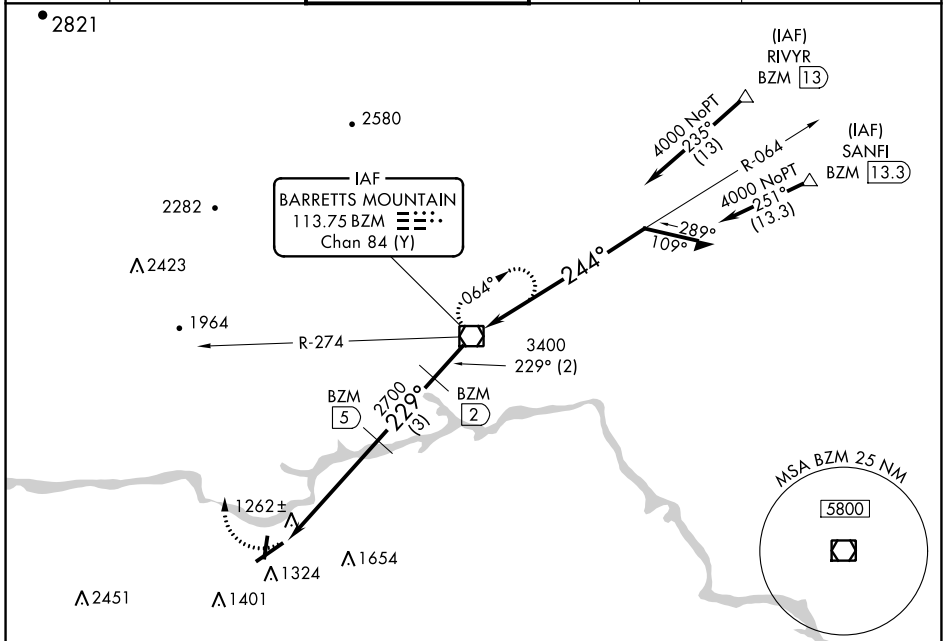
VOR/DME BZM 113.75 Chan 84 (Y)	APP CRS 229°	Rwy Idg TDZE 1190 Apt Elev 1190	6401
--	------------------------	---	-------------

VOR/DME RWY 24

HICKORY RGNL (HKY)

<p>⚠ Inop table does not apply. Night landing: Rwy 1/6/19 NA. When local altimeter setting not received, use Morganton altimeter setting and increase all MDA 40 feet and visibility S-24 and Circling Cat D ¼ SM.</p>	<p>MALSR </p>	<p>MISSED APPROACH: Climbing right turn to 4000 via heading 340° and BZM R-274 to BZM VOR/DME and hold.</p>
--	---	---

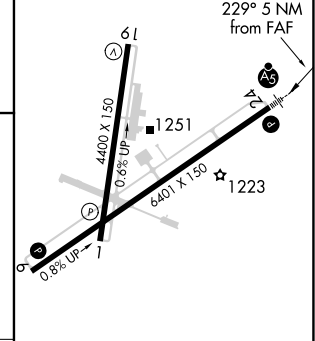
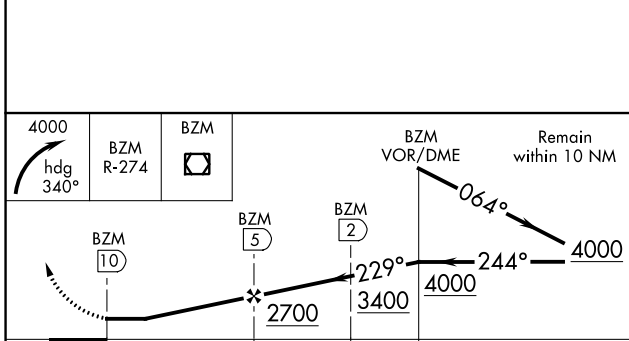
ASOS 118.325	ATLANTA CENTER 125.15 263.0	HICKORY TOWER ★ 128.15 (CTAF) 0	GND CON 121.7	CLNC DEL 121.7	CLNC DEL 124.25 (When twr closed)
------------------------	---------------------------------------	---	-------------------------	--------------------------	--



SE-2, 07 SEP 2023 to 05 OCT 2023

SE-2, 07 SEP 2023 to 05 OCT 2023

ELEV 1190	D TDZE 1190
-----------	--------------------



CATEGORY	A	B	C	D	
S-24	1600-1	410 (500-1)	1600-1¼	410 (500-1¼)	HIRL Rwy 6-24 0
CIRCLING	1640-1 450 (500-1)	1660-1 470 (500-1)	2020-2½ 830 (900-2½)	2040-2¾ 850 (900-2¾)	MIRL Rwy 1-19 0 REIL Rwy 1 0 REIL Rws 6 and 19