

WAAS CH <b>45508</b> <b>W36A</b>	APP CRS <b>002°</b>	Rwy Idg <b>8000</b> TDZE <b>401</b> Apt Elev <b>407</b>
--	------------------------	---

# RNAV (GPS) RWY 36

OWENSBORO/DAVIESS COUNTY RGNL (OWB)

**⚠** For uncompensated Baro-VNAV systems, LNAV/VNAV NA below -15°C (5°F) or above 54°C (130°F). DME/DME RNP-0.3 NA. Baro-VNAV and VDP NA when using Evansville altimeter setting. When local altimeter setting not received, use Evansville altimeter setting: increase LPV DA to 656 feet; increase LNAV/VNAV DA to 720 feet and all Cats visibility 1/8 mile; increase all MDA 60 feet and LNAV Cats C/D and Circling Cats C/D visibility 1/4 mile.

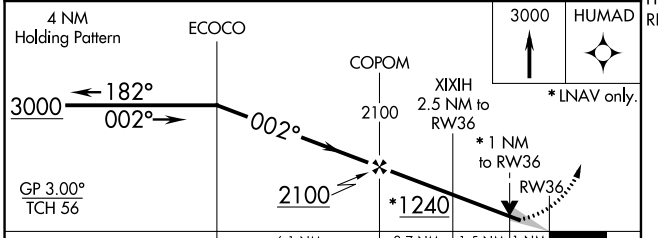
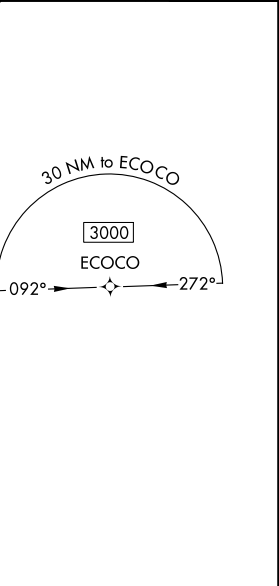
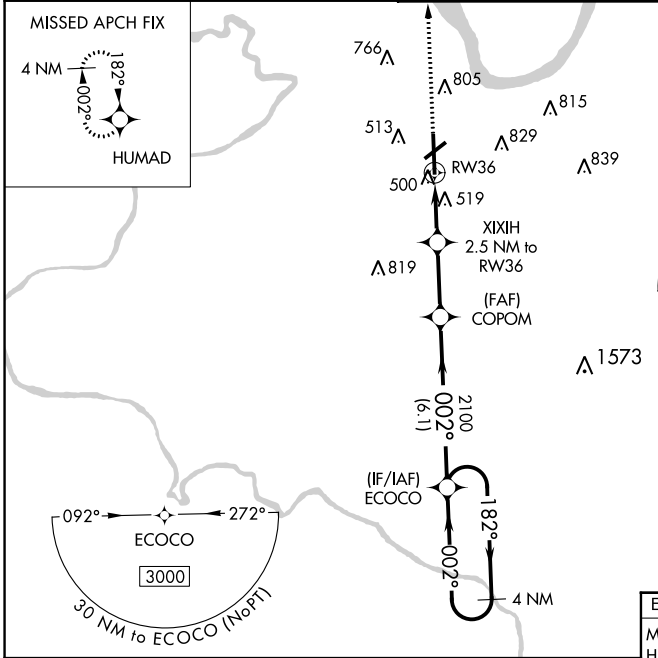
MALSR



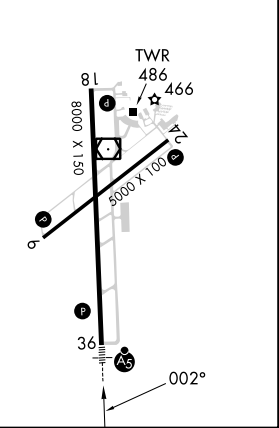
**MISSED APPROACH:**  
Climb to 3000 direct HUMAD and hold.

AWOS-3PT <b>119.025</b>	EVANSVILLE APP CON * <b>124.025 290.9</b>	OWENSBORO TOWER * <b>120.7 (CTAF) 251.15</b>
----------------------------	--	---

GND CON <b>121.7</b>	UNICOM <b>122.95</b>
-------------------------	-------------------------



ELEV 407	TDZE 401
MIRL Rwy 6-24	
HIRL Rwy 18-36	
REIL Rws 6, 18, and 24	



CATEGORY	A	B	C	D
LPV DA		601-1/2	200 (200-1/2)	
LNAV/VNAV DA		665-1/2	264 (300-1/2)	
LNAV MDA	780-1/2	379 (400-1/2)	780-5/8	379 (400-5/8)
CIRCLING	860-1 453 (500-1)	1120-1 713 (800-1)	1140-2 733 (800-2)	1140-2 1/4 733 (800-2 1/4)

SE-1, 07 SEP 2023 to 05 OCT 2023

SE-1, 07 SEP 2023 to 05 OCT 2023