

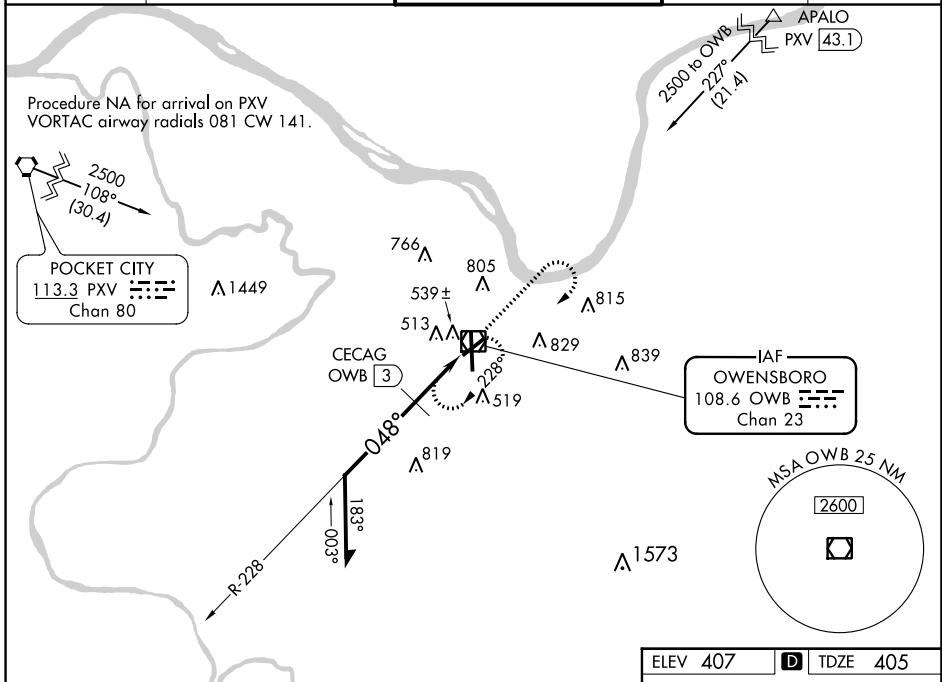
VOR/DME OWB 108.6 Chan 23	APP CRS 048°	Rwy Idg TDZE Apt Elev	5000 405 407
---	------------------------	-----------------------------	---

VOR RWY 6

OWENSBORO/DAVISS COUNTY RGNL (OWB)

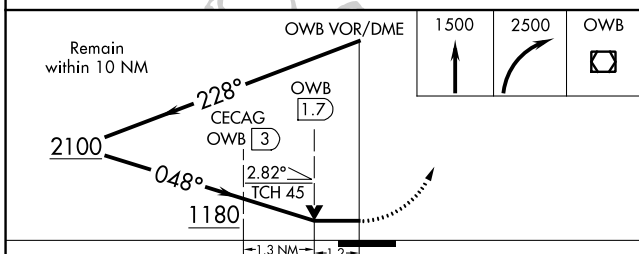
<p>▼ Rwy 6 helicopter visibility reduction below $\frac{3}{4}$ SM NA.</p> <p>▲</p>	MISSED APPROACH: Climb to 1500 then climbing right turn to 2500 direct OWB VOR/DME and hold.
---	--

AWOS-3PT 119.025	EVANSVILLE APP CON * 124.025 290.9	OWENSBORO TOWER * 120.7 (CTAF) 251.15	GND CON 121.7	UNICOM 122.95
----------------------------	--	---	-------------------------	-------------------------

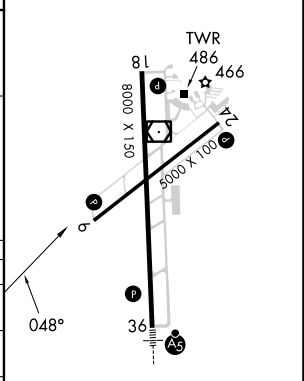


SE-1, 07 SEP 2023 to 05 OCT 2023

SE-1, 07 SEP 2023 to 05 OCT 2023



ELEV 407	D TDZE 405
----------	-------------------



CATEGORY	A	B	C	D
S-6	1180-1 775 (800-1)	1180-1¼ 775 (800-1¼)	1180-2½	775 (800-2½)
C CIRCLING	1180-1 773 (800-1)	1180-1¼ 773 (800-1¼)	1180-2½	773 (800-2½)
CECAG FIX MINIMUMS				
S-6	820-1	415 (500-1)	820-1½	415 (500-1½)
C CIRCLING	860-1 453 (500-1)	1120-1 713 (800-1)	1140-2 733 (800-2)	1140-2¼ 733 (800-2¼)

MIRL Rwy 6-24
HIRL Rwy 18-36
REIL Rwy 6, 18, and 24

VOR RWY 6