

JACKSONVILLE, NORTH CAROLINA

RNAV (GPS) RWY 19

AL-732 [USN] NEW RIVER MCAS (MC CUTCHEON FLD)(KNCA)

APCH CRS	Rwy ldg	4789
188°	TDZE	23
	Arpt Elev	26

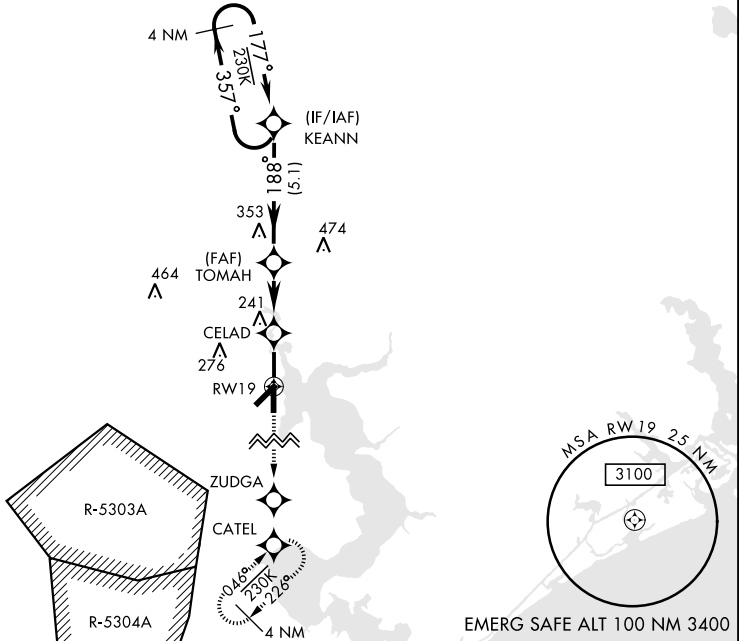
RNP APCH
RADAR required
▼

MISSED APPROACH: Climb to 2100 direct ZUDGA, direct CATEL and hold.

ATIS ★	CHERRY POINT APP CON	TOWER ★	GND CON	CLNC DEL	ASR/PAR
288.325	119.35 377.175	134.95(CTAF) 0★ 360.2	121.8 254.275	269.25	

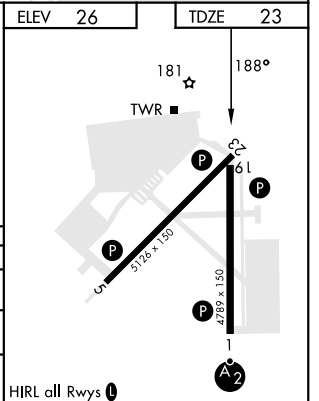
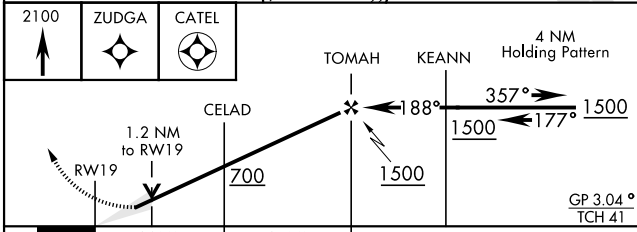
*154
CAUTION: WCH for aircraft similar to B-747, KC-10, B-1, C-5 is 16 ft less than min 20 ft.

Baro VNAV NA below -1.5°C (5°F) and above 54°C (129°F).



SE-2, 07 SEP 2023 to 05 OCT 2023

SE-2, 07 SEP 2023 to 05 OCT 2023



CATEGORY	A	B	C	D
INAV/VNAV DA	432-1 $\frac{3}{8}$		409	(500-1 $\frac{3}{8}$)
LNVA MDA	440-1	417 (500-1)	440-1 $\frac{3}{8}$	417 (500-1 $\frac{3}{8}$)
CIRCLING	500-1	474 (500-1)	500-1 $\frac{1}{2}$ 474 (500-1 $\frac{1}{2}$)	580-2 554 (600-2)

HIRL all Rwy's

JACKSONVILLE, NORTH CAROLINA
Amdt 4 03NOV22

34° 43'N-77° 26'W NEW RIVER MCAS (MC CUTCHEON FLD)(KNCA)

RNAV (GPS) RWY 19