

JACKSONVILLE, NORTH CAROLINA

RNAV (GPS) RWY 5

WAAS Chan 77243 W05A	APCH CRS 053°	Rwy Idg TDZE Arpt Elev 5126 26 26	AL-732 [USN]	NEW RIVER MCAS (MC CUTCHEON FLD) (KNCA)
--	-------------------------	---	--------------	---

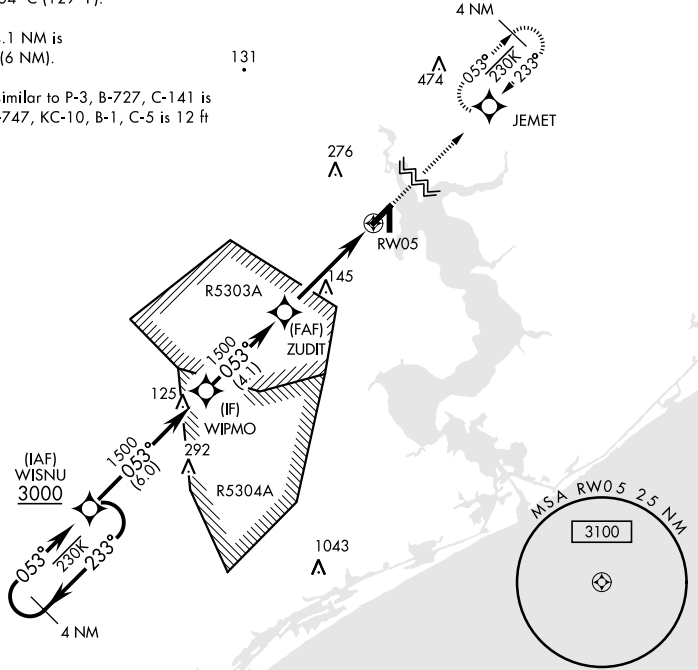
RNP APCH	MISSED APPROACH: Climbing to 1500 direct JEMET and hold.
RADAR required	

ATIS ★ 288.325	CHERRY POINT APP CON 119.35 377.175	TOWER ★ 134.95(CTAF) 0★ 360.2	GND CON 121.8 254.275	CLNC DEL 269.25	ASR/PAR
--------------------------	---	---	---------------------------------	---------------------------	---------

For uncompensated Baro-VNAV systems, LNAV/VNAV NA below -15°C (5°F) or above 54°C (129°F).

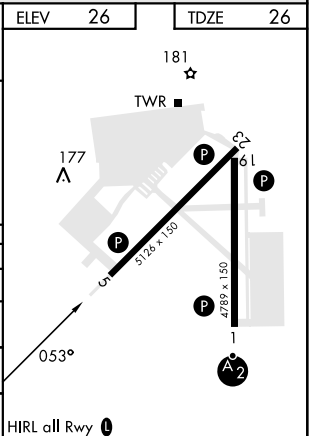
Intermediate segment length 4.1 NM is less than minimum for CAT D (6 NM).

CAUTION: WCH for aircraft similar to P-3, B-727, C-141 is 17 ft and aircraft similar to B-747, KC-10, B-1, C-5 is 12 ft less than min 20 ft.



EMERG SAFE ALT 100 NM 3400

4 NM Holding Pattern	WISNU		TCH (37) is not coincident with VGSI TCH (47).		1500	JEMET	ELEV 26	TDZE 26
3000	← 233°	→ 053°	← 053°	← 053°	← 053°	← 053°	← 053°	← 053°
GP 3.04°	TCH 37	WIPMO	ZUDIT	1500	1500	1.2 NM to RW05	RW05	
				4.5 NM				
CATEGORY	A		B		C		D	
LPV DA	226- $\frac{3}{4}$		200		(200- $\frac{3}{4}$)			
LNAV/VNAV DA	309- $\frac{7}{8}$ 283 (300- $\frac{7}{8}$)		320- $\frac{7}{8}$ 294 (300- $\frac{7}{8}$)		328- $\frac{7}{8}$ 302 (400- $\frac{7}{8}$)		339- $\frac{7}{8}$ 313 (400- $\frac{7}{8}$)	
LNAV MDA	440-1 414 (500-1)		440-1 414 (500-1)		440-1 414 (500-1)		440-1 414 (500-1)	
CIRCLING	500-1 474 (500-1)		500-1 474 (500-1)		500-1 474 (500-1)		580-2 554 (600-2)	
							HIRL all Rwy 0	



JACKSONVILLE, NORTH CAROLINA
Amdt 7 03NOV22

34°43'N-77°26'W NEW RIVER MCAS (MC CUTCHEON FLD) (KNCA)

RNAV (GPS) RWY 5

SE-2, 07 SEP 2023 to 05 OCT 2023

SE-2, 07 SEP 2023 to 05 OCT 2023