

TACAN RWY 1

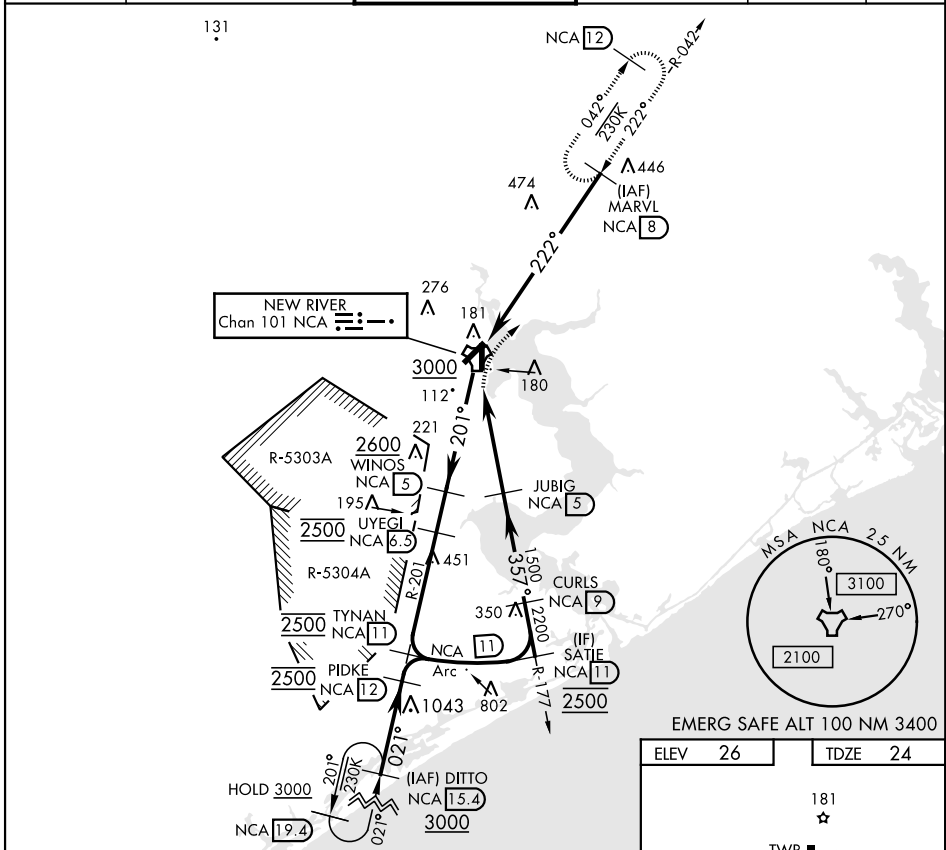
TACAN NCA Chan 101	APCH CRS 357°	Rwy Idg TDZE Arprt Elev 4789 24 26	AL-732 [USN]	NEW RIVER MCAS (MC CUTCHEON FLD) (KNCA)
------------------------------	-------------------------	--	--------------	---

RADAR required.

* When ALS inop, increase vis CAT AB to 1 mile, CAT CD to 1½ miles.

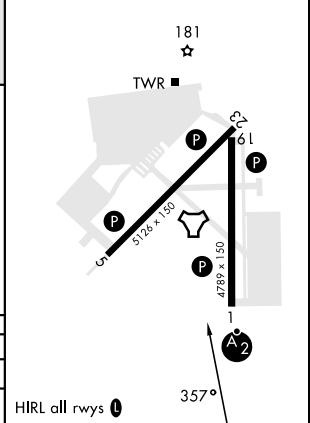
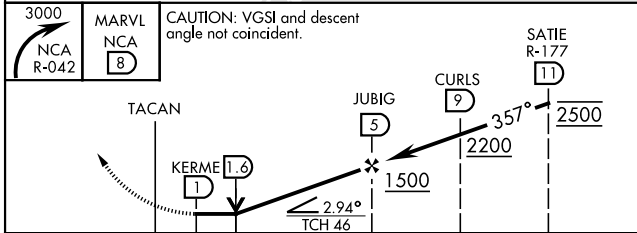
MISSED APPROACH: Climbing right turn to 3000 direct MARVL (NCA R-042/ 8 DME) and hold. Continue climb-in-hold to 3000.

ATIS ★ 288.325	CHERRY POINT APP CON 119.35 377.175	TOWER ★ 134.95 (CTAF) 0★ 360.2	GND CON 121.8 254.275	CLNC DEL 269.25	ASR/PAR
--------------------------	---	---	---------------------------------	---------------------------	---------



EMERG SAFE ALT 100 NM 3400

ELEV 26	TDZE 24
---------	---------



CATEGORY	A		B		C		D	
S-1*	440-¾	416 (500-¾)	440-1	416 (500-1)	440-1	416 (500-1)	580-2	554 (600-2)
C CIRCLING	500-1	474 (500-1)	500-1½	474 (500-1½)	580-2	554 (600-2)	580-2	554 (600-2)

TACAN RWY 1

SE-2, 07 SEP 2023 to 05 OCT 2023

SE-2, 07 SEP 2023 to 05 OCT 2023