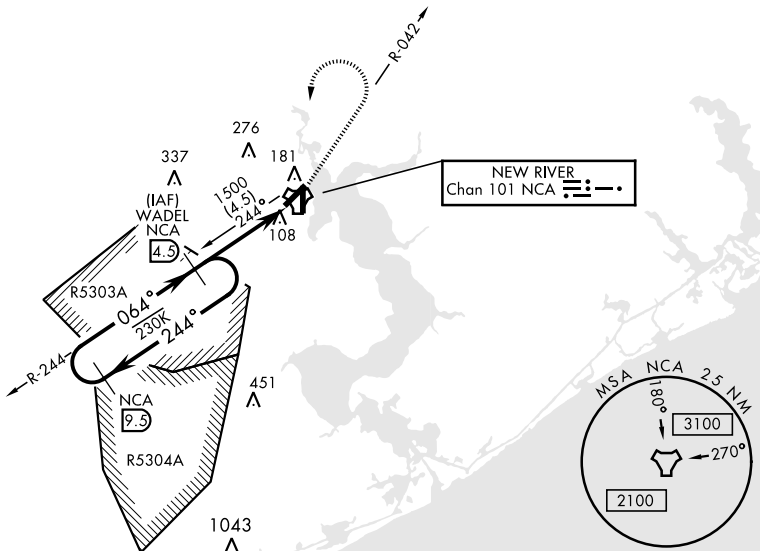


# TACAN RWY 5

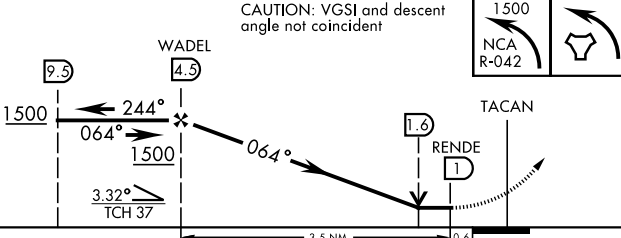
TACAN NCA Chan 101	APCH CRS 064°	Rwy Idg 5126 TDZE 26 Arprt Elev 26	AL-732 [USN] NEW RIVER MCAS (MC CUTCHEON FLD)(KNCA)
-----------------------	------------------	---	---

RADAR required.		MISSED APPROACH: Climbing left turn to 1500 via NCA R-042. Then left turn direct NCA TACAN, then via NCA R-244 direct WADEL and hold.			
ATIS ★ 288.325	CHERRY POINT APP CON 119.35 377.175	TOWER ★ 134.95(CTAF) 0★ 360.2	GND CON 121.8 254.275	CLNC DEL 269.25	ASR/PAR

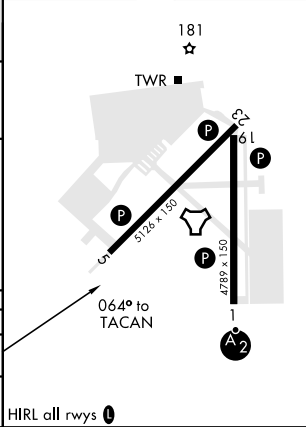


EMERG SAFE ALT 100 NM 3400

CAUTION: VGSI and descent angle not coincident



ELEV	26	TDZE	26
------	----	------	----



CATEGORY	A	B	C	D
S-5	440-1 414 (500-1)	440-1 414 (500-1)	440-1 1/8 414 (500-1 1/8)	440-1 1/8 414 (500-1 1/8)
CIRCLING	500-1 474 (500-1)	500-1 474 (500-1)	500-1 1/2 474 (500-1 1/2)	580-2 554 (600-2)

HIRL all rwys

# TACAN RWY 5

SE-2, 07 SEP 2023 to 05 OCT 2023

SE-2, 07 SEP 2023 to 05 OCT 2023