

BNICE ONE DEPARTURE (RNAV) Departure Routes

FORT LAUDERDALE, FLORIDA

SE-3, 07 SEP 2023 to 05 OCT 2023

RNAV 1 - DME/DME/IRU or GPS.

RADAR required.

TOP ALTITUDE:

4000

See following page for transition routes.

BNICE

223°
(12)

MRENO
4000

296°
(25)

KBUNK

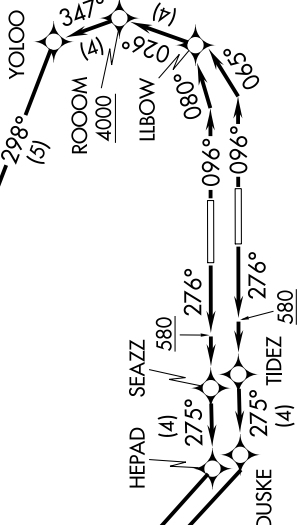
318°
(13)

318°
(14)

285°
(42)

LRICK

N



FORT LAUDERDALE TOWER
119.3 257.8
MIAMI DEP CON
126.05 251.1

TAKEOFF MINIMUMS
Rwys 10L/R, 28L/R: Standard with minimum climb of 500' per NM to 580.

NOTE: Jet aircraft only.
NOTE: Accelerate to 250K, if unable, advise ATC.

(CONTINUED ON FOLLOWING PAGE)
(NARRATIVE ON FOLLOWING PAGE)

NOTE: Chart not to scale.

SE-3, 07 SEP 2023 to 05 OCT 2023

BNICE ONE DEPARTURE (RNAV) Departure Routes

FORT LAUDERDALE, FLORIDA