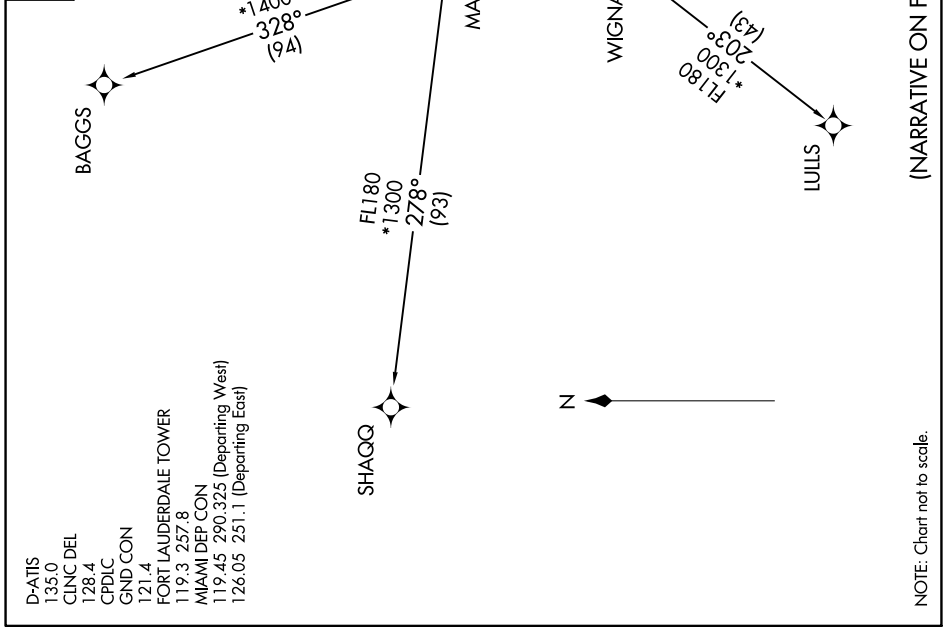


GLADZ TWO DEPARTURE (RNAV) Transition Routes

SE-3, 07 SEP 2023 to 05 OCT 2023

TOP ALTITUDE: 4000	RNAV-1 DME/DME/IRU or GPS. RADAR required.
-------------------------------------	---

NOTE: Jet aircraft only.
 NOTE: Accelerate to 250K, if unable, advise ATC.
 NOTE: SHAGG and BAGGS Transitions ATC assigned except aircraft departing MIA.



(NARRATIVE ON FOLLOWING PAGE)

NOTE: Chart not to scale.

SE-3, 07 SEP 2023 to 05 OCT 2023