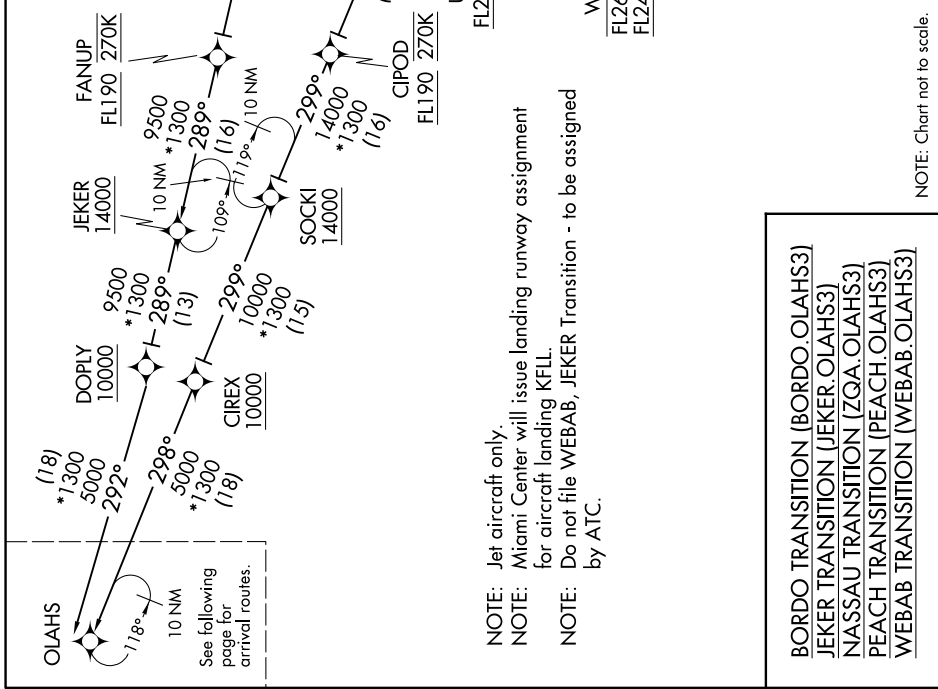


OLAH3 THREE ARRIVAL (RNAV) Transition Routes FORT LAUDERDALE, FLORIDA

SE-3, 07 SEP 2023 to 05 OCT 2023

MIAMI APP CON
 119.45 290.325 (6000 feet & above)
 128.6 306.975 (5000 feet & below)
 FLL D-ATIS
 135.0
 FAE ATIS
 119.85
 OPF ATIS
 125.9
 PMP ATIS
 120.55

RNAV 1-DME/DME/IRU or GPS.
 BORDO Transition: RNAV 1-GPS.
 PEACH Transition: RNAV 1-GPS.
 NASSAU Transition: RNAV 1-GPS.
 RADAR required.



NOTE: Jet aircraft only.
 NOTE: Miami Center will issue landing runway assignment for aircraft landing KFLI.
 NOTE: Do not file WEBAB, JEKER Transition - to be assigned by ATC.

BORDO TRANSITION (BORDO.OLAH33)
JEKER TRANSITION (JEKER.OLAH33)
NASSAU TRANSITION (ZQA.OLAH33)
PEACH TRANSITION (PEACH.OLAH33)
WEBAB TRANSITION (WEBAB.OLAH33)

NOTE: Chart not to scale.

(CONTINUED ON FOLLOWING PAGE)

SE-3, 07 SEP 2023 to 05 OCT 2023

OLAH3 THREE ARRIVAL (RNAV) Transition Routes FORT LAUDERDALE, FLORIDA