

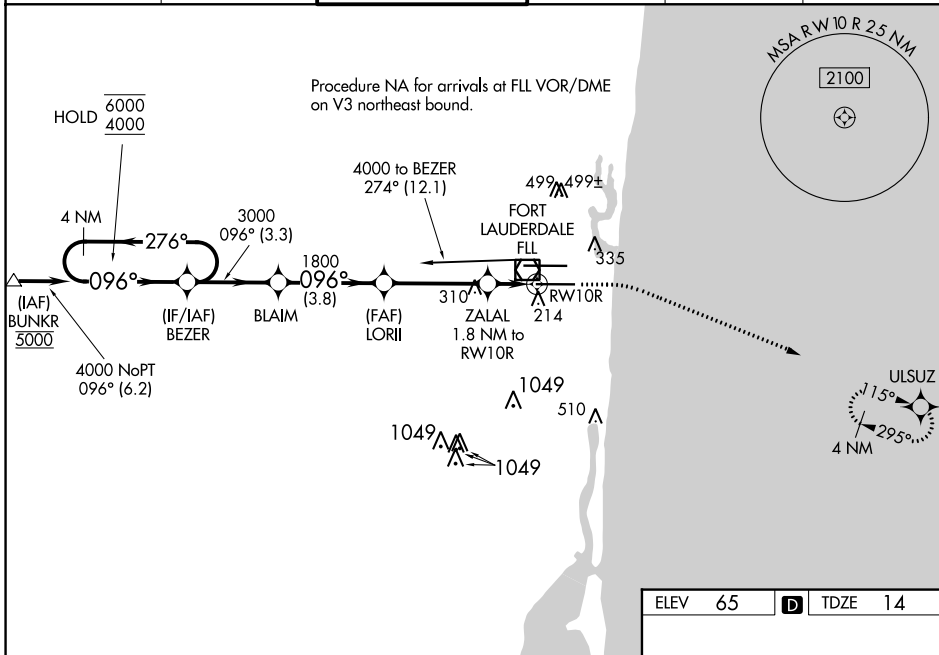
WAAS CH 63236 W10B	APP CRS 096°	Rwy Idg TDZE 14 Apt Elev 65	8000
--	------------------------	---	-------------

RNAV (GPS) RWY 10R

FORT LAUDERDALE/HOLLYWOOD INTL (FLL)

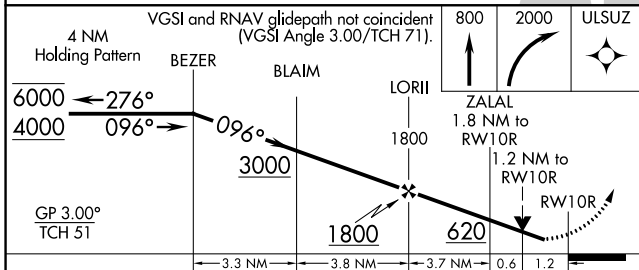
RNP APCH-GPS.		MALSF 	MISSED APPROACH: Climb to 800 then climbing right turn to 2000 direct ULSUZ and hold.
⚠️ LNAV procedure NA during simultaneous operations. Rwy 10R helicopter visibility reduction below RVR 4000 NA. Inop table does not apply to LPV all Cats. For uncompensated Baro-VNAV systems, LNAV/VNAV NA below 7° C or above 54° C. For inop ALS, increase LNAV Cats C and D visibility to 1 1/2 SM. Use of FD or AP required during simultaneous operations			

D-ATIS 135.0	MIAMI APP CON 133.775 285.6	FORT LAUDERDALE TOWER 119.3 257.8	GND CON 121.4	CLNC DEL 128.4	CPDLC
------------------------	---------------------------------------	--	-------------------------	--------------------------	-------



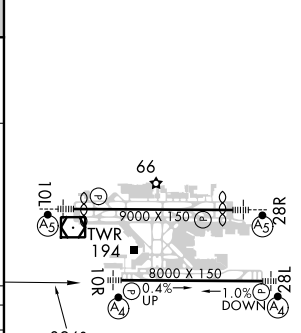
SE-3, 07 SEP 2023 to 05 OCT 2023

SE-3, 07 SEP 2023 to 05 OCT 2023



ELEV 65	D	TDZE 14
---------	----------	---------

CATEGORY	A	B	C	D
LPV DA	264/40		250 (200-3/4)	
LNAV/VNAV DA	355/40		341 (300-3/4)	
LNAV MDA	460/40	446 (400-3/4)	460/55	446 (400-1)
C CIRCLING	680-1	615 (700-1)	800-2 735 (800-2)	800-2 1/4 735 (800-2 1/4)



HIRL Rwy 10L-28R and 10R-28L