

TARPN THREE ARRIVAL (RNAV)

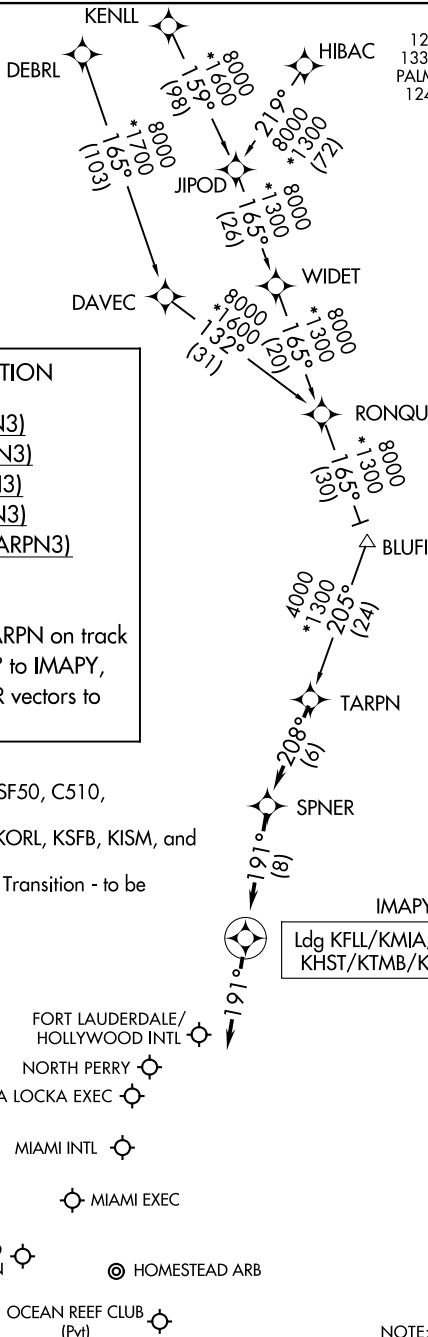
AL-744 (FAA)

FORT LAUDERDALE, FLORIDA

RNAV 1 - DME/DME/IRU or GPS.

RADAR required.

- MIAMI APP CON 126.05 251.1 (9000)
- 133.775 371.9 (7000)
- PALM BEACH APP CON 124.6 317.4 (12000)
- FLL D-ATIS 135.0
- HWO ATIS 135.475
- KHST ATIS * 132.275 269.9
- MIA D-ATIS 119.15
- OPF ATIS 125.9
- TMB ATIS 124.0
- X51 AWOS-3 118.375



ARRIVAL ROUTE DESCRIPTION

- DEBRL TRANSITION (DEBRL.TARPN3)
- HIBAC TRANSITION (HIBAC.TARPN3)
- JIPOD TRANSITION (JIPOD.TARPN3)
- KENLL TRANSITION (KENLL.TARPN3)
- RONQU TRANSITION (RONQU.TARPN3)

LANDING ALL AIRPORTS: From TARPN on track 208° to SPNER, then on track 191° to IMAPY, then on track 191°. Expect RADAR vectors to final approach course.

- NOTE: Turboprop and EA50, E50P, SF50, C510, and C525 aircraft only.
- NOTE: JIPOD Transition for KMCO, KORL, KSFB, KISM, and KLEE departures only.
- NOTE: Do not file DEBRL or RONQU Transition - to be assigned by ATC.

Ldg KFLL/KMIA/O7FA/X51/KHST/KTMB/KHWO/KOPF

NOTE: Chart not to scale.

TARPN THREE ARRIVAL (RNAV)

FORT LAUDERDALE, FLORIDA

SE-3, 07 SEP 2023 to 05 OCT 2023

SE-3, 07 SEP 2023 to 05 OCT 2023