

PARIS, TEXAS

AL-803 (FAA)

23054

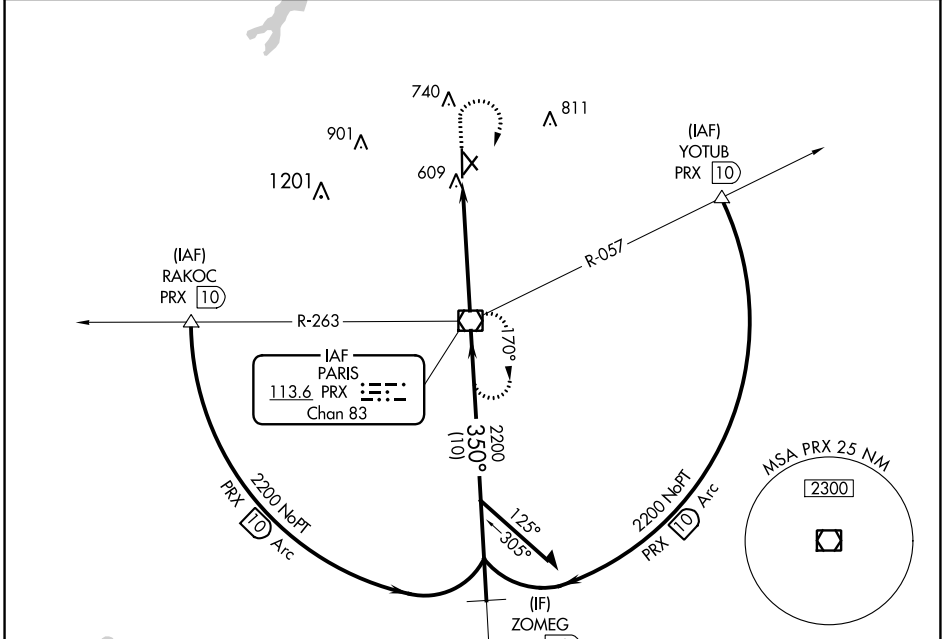
VOR/DME PRX 113.6 Chan 83	APP CRS 350°	Rwy Idg TDZE Apt Elev	6002 532 548
---	------------------------	-----------------------------	---

VOR RWY 35

COX FLD (PRX)

▼ Rwy 35 helicopter visibility reduction below 3/4 SM NA.
▲ MISSED APPROACH: Climb to 2000 then climbing right turn to 2300 direct PRX VOR/DME and hold.

AWOS-3PT 119.675	FORT WORTH CENTER 124.875	UNICOM 122.975 (CTAF) 0
----------------------------	-------------------------------------	--

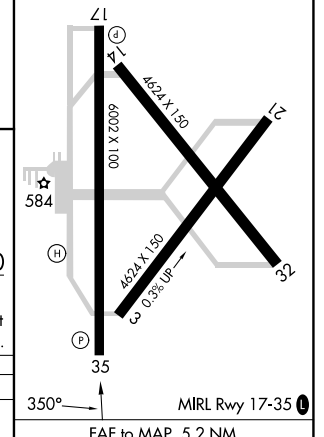
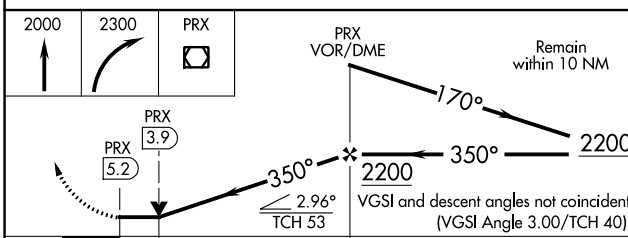


SC-2, 07 SEP 2023 to 05 OCT 2023

SC-2, 07 SEP 2023 to 05 OCT 2023



ELEV 548	D TDZE 532
----------	-------------------



CATEGORY	A	B	C	D
S-35	960-1 428 (500-1)		960-1 1/4 428 (500-1 1/4)	
CIRCLING	1060-1 512 (600-1)		1100-1 1/2 552 (600-1 1/2)	1220-2 1/4 672 (700-2 1/4)

FAF to MAP 5.2 NM	
Knots	60 90 120 150 180
Min:Sec	5:12 3:28 2:36 2:05 1:44

PARIS, TEXAS
Amdt 2C 23FEB23

33°38'N-95°27'W

COX FLD (PRX) VOR RWY 35