

WAAS CH 99426 W18A	APP CRS 176°	Rwy Idg TDZE Apt Elev	6109 356 365
--	------------------------	-----------------------------	---

RNAV (GPS) RWY 18

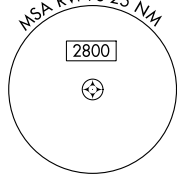
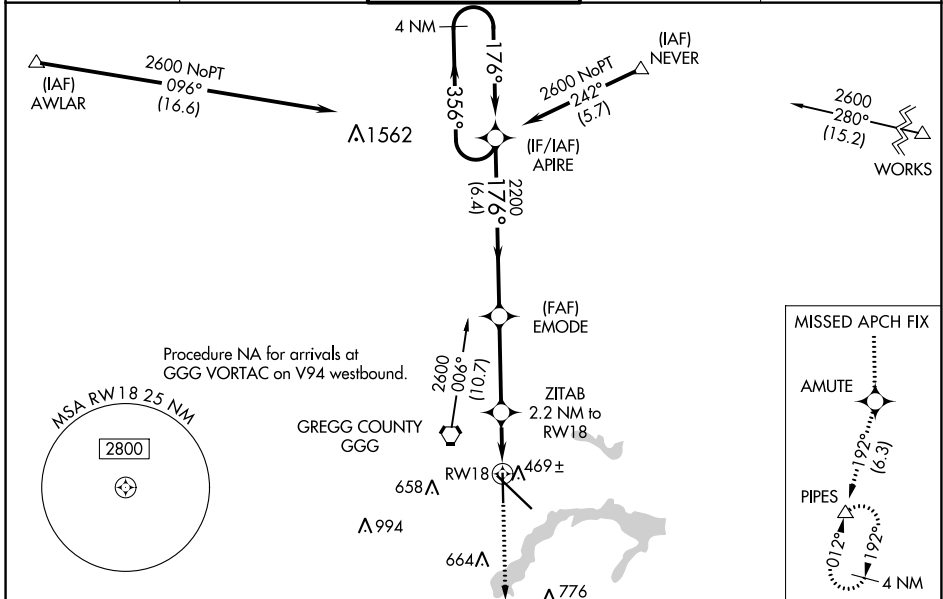
EAST TEXAS RGNL (GGG)

RNP APCH - GPS

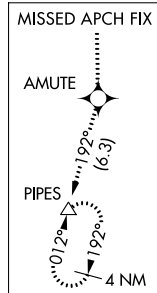
Baro-VNAV NA when using Gilmer altimeter setting. For uncompensated Baro-VNAV systems, LNAV/VNAV NA below -15°C or above 41°C. Rwy 18 helicopter visibility reduction below ¾ SM NA. When local altimeter setting not received, use Gilmer altimeter setting and increase all DA 59 feet and all MDA 60 feet; increase LPV and LNAV/VNAV visibility all Cats ½ SM and LNAV and Circling visibility Cts C/D ¼ SM.

MISSED APPROACH:
Climb to 2400 direct AMUTE and on track 192° to PIPES and hold.

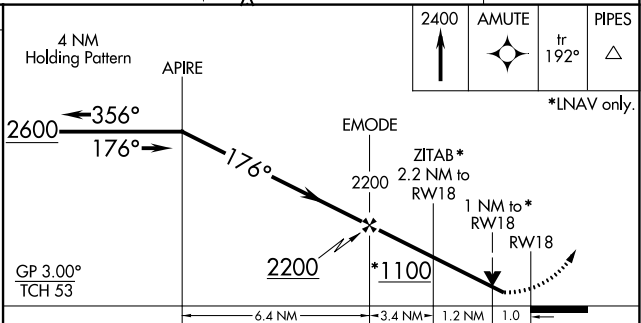
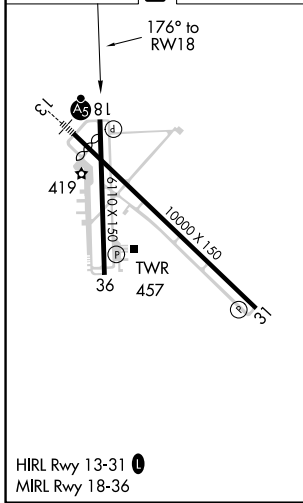
ATIS 119.65	LONGVIEW APP CON* 128.75 379.15	EASTEX TOWER* 119.2 (CTAF) 0377.05	GND CON 121.6	UNICOM 122.95
-----------------------	---	--	-------------------------	-------------------------



Procedure NA for arrivals at GGG VORTAC on V94 westbound.



ELEV 365	D	TDZE 356
----------	----------	----------



CATEGORY	A	B	C	D
LPV DA		630-7/8	274 (300-7/8)	
LNAV/VNAV DA		652-1	296 (300-1)	
LNAV MDA		720-1	364 (400-1)	
CIRCLING	860-1	495 (500-1)	980-1 3/4 614 (700-1 3/4)	1080-2 1/4 714 (800-2 1/4)

SC-2, 07 SEP 2023 to 05 OCT 2023

SC-2, 07 SEP 2023 to 05 OCT 2023