

VORTAC GGG 112.9 Chan 76	APP CRS 306°	Rwy Idg TDZE Apt Elev	9200 354 365
--	------------------------	-----------------------------	---

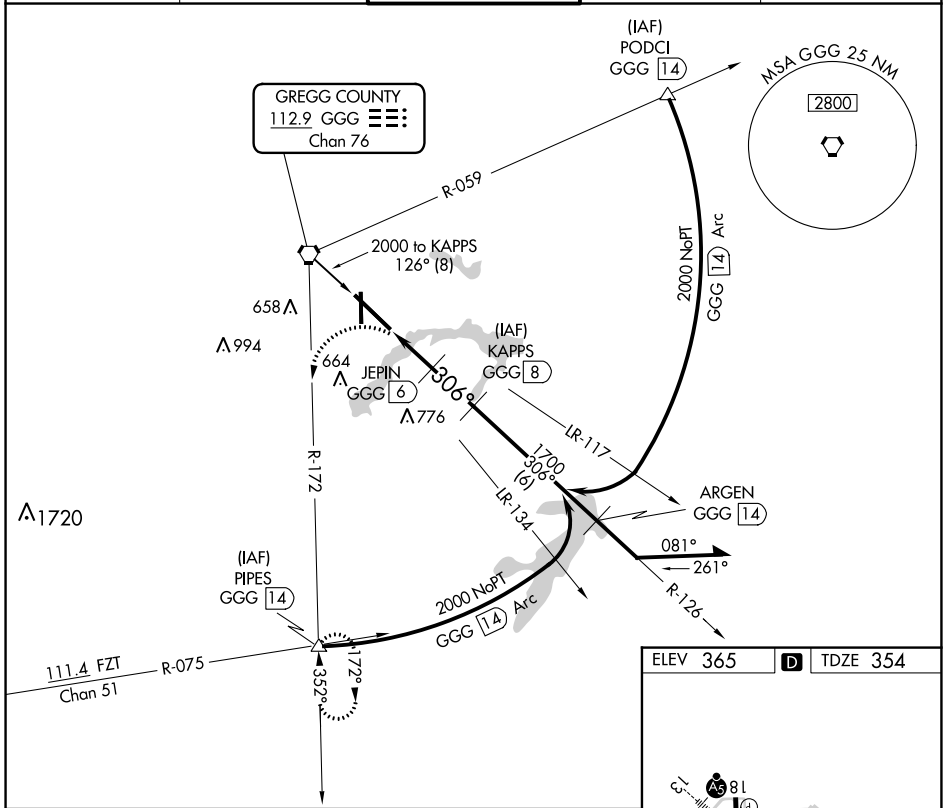
VOR/DME or TACAN RWY 31

EAST TEXAS RGNL (GGG)

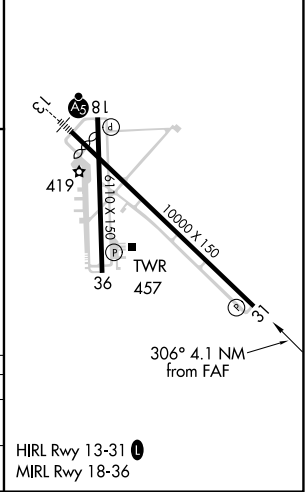
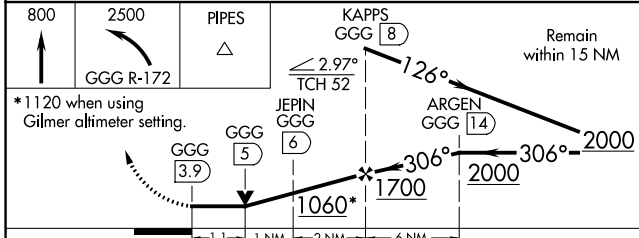
⚠ When local altimeter setting not received, use Gilmer altimeter setting and increase all MDA 60 feet and increase S-31 Cats C/D/E and Circling Cats C/D/E visibility ½ SM. VDP NA when using Gilmer altimeter setting.

⚠ MISSED APPROACH: Climb to 800, then climbing left turn to 2500 via GGG R-172 to PIPES INT and hold.

ATIS 119.65	LONGVIEW APP CON* 128.75 379.15	EASTEX TOWER* 119.2 (CTAF) 377.05	GND CON 121.6	UNICOM 122.95
-----------------------	---	---	-------------------------	-------------------------



ELEV 365	D	TDZE 354
----------	----------	----------



CATEGORY	A	B	C	D	E
S-31	780-1 426 (500-1)		780-1½ 426 (500-1½)		
CIRCLING	860-1 495 (500-1)		980-1¾ 614 (700-1¾)	1080-2¼ 714 (800-2¼)	1080-2½ 715 (800-2½)

HIRL Rwy 13-31 **1**
MIRL Rwy 18-36

SC-2, 07 SEP 2023 to 05 OCT 2023

SC-2, 07 SEP 2023 to 05 OCT 2023