

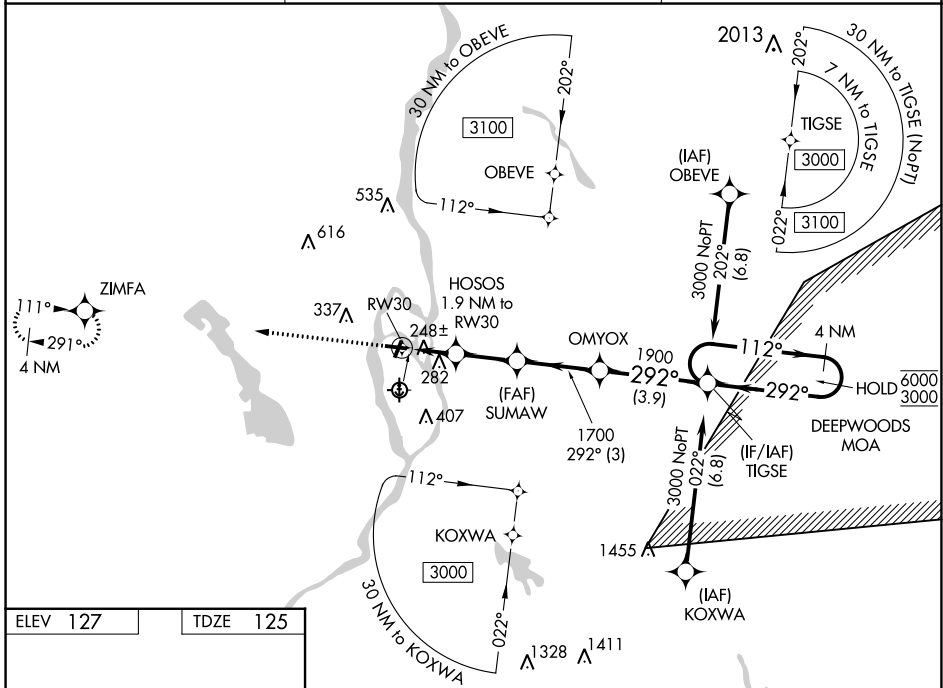
WAAS CH <b>72744</b> <b>W30A</b>	APP CRS <b>292°</b>	Rwy Idg TDZE <b>125</b> Apt Elev <b>127</b>	<b>3312</b>
--	------------------------	---	-------------

# RNAV (GPS) RWY 30

DEWITT FLD/OLD TOWN MUNI (OLD)

RNP APCH - GPS.	<p><b>NA</b> Circling NA to Rwy 17W and 35W. Procedure NA at night. Rwy 30 helicopter visibility reduction below 3/4 SM NA. Use Bangor Intl altimeter setting; when not received, use Bar Harbor altimeter setting and increase all MDA 60 feet and increase LP and Circling Cat C visibility 1/4 SM. Procedure NA when Deepwoods MOA is active.</p>	<p>MISSED APPROACH: Climb to 3000 direct ZIMFA and hold, continue climb-in-hold to 3000.</p>
-----------------	--	--

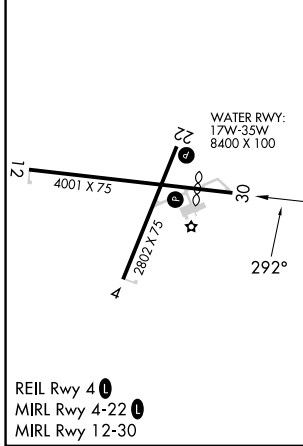
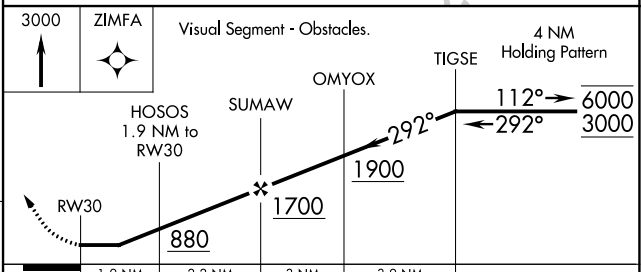
BGR ASOS <b>127.75</b>	BANGOR APP CON <b>118.925 239.3</b>	UNICOM <b>122.8 (CTAF)</b>
---------------------------	--	-------------------------------



NE-1, 07 SEP 2023 to 05 OCT 2023

NE-1, 07 SEP 2023 to 05 OCT 2023

ELEV <b>127</b>	TDZE <b>125</b>
-----------------	-----------------



CATEGORY	A	B	C	D
LP MDA	540-1	415 (500-1)	540-1 1/8 415 (500-1 1/8)	NA
LNAV MDA	580-1	455 (500-1)	580-1 3/8 455 (500-1 3/8)	NA
<b>C</b> CIRCLING	640-1 513 (600-1)	700-1 573 (600-1)	760-1 3/4 633 (700-1 3/4)	NA