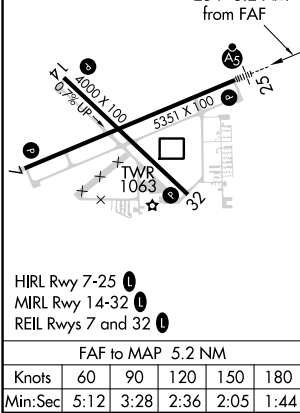
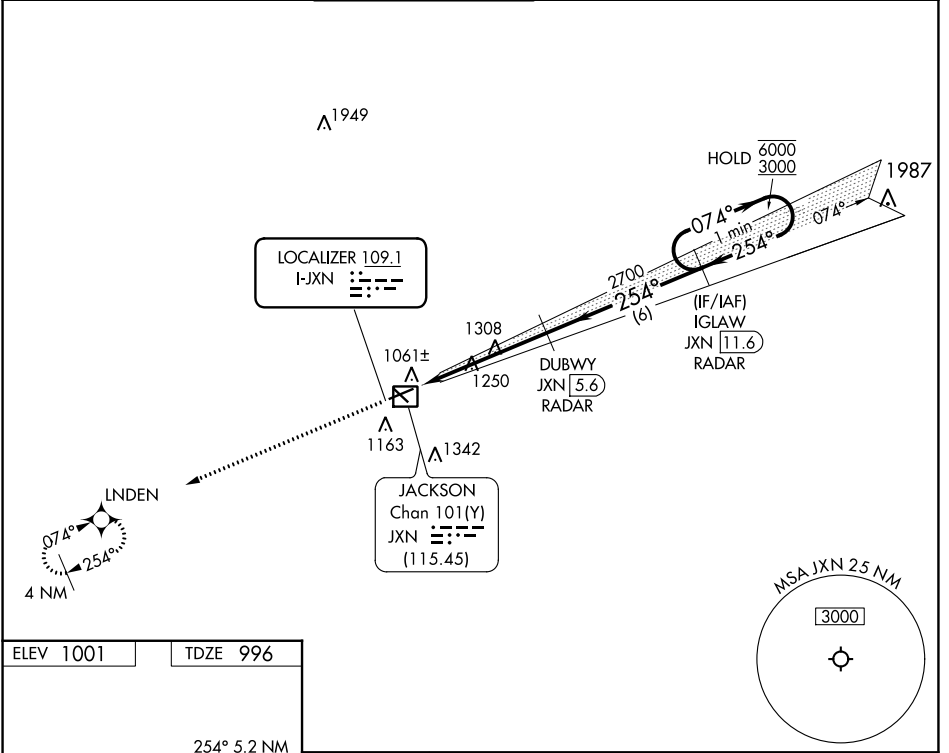


LOC I-JXN 109.1	APP CRS 254°	Rwy Idg TDZE Apt Elev	5351 996 1001
---------------------------	------------------------	-----------------------------	--

ILS or LOC RWY 25
JACKSON COUNTY/REYNOLDS FLD (JXN)

RNAV-1 GPS required. RADAR required for procedure entry. DME or RADAR required.		MALSR	MISSED APPROACH: Climb to 3000 direct LNDEN and hold.		
For inop ALS, increase S-LOC 25 Cat C/D visibility to 1 3/4 SM.					
ATIS 125.725	GREAT LAKES APP CON * 127.3 335.575	JACKSON TOWER * 128.475(CTAF) 0 257.8	GND CON 121.9	CLNC DEL 121.9	UNICOM 122.95



ELEV 1001	TDZE 996	3000	LNDEN	DUBWY JXN 5.6 RADAR	IGLAW JXN 11.6 RADAR	1 Minute Holding Pattern
*LOC only.		JXN 0.4	*JXN 2.1	2700	254°	074° → 6000 ← 254° 3000
		1.8	3.4 NM	6 NM	GS 3.00° TCH 45	
CATEGORY	A	B	C	D		
S-ILS 25	1196-1/2		200 (200-1/2)			
S-LOC 25	1620-1/2	624 (700-1/2)	1620-1 3/8	624 (700-1 3/8)		
CIRCLING	1620-1	619 (700-1)	1660-1 3/4	659 (700-1 3/4)		1660-2 659 (700-2)

EC-1, 07 SEP 2023 to 05 OCT 2023

EC-1, 07 SEP 2023 to 05 OCT 2023