

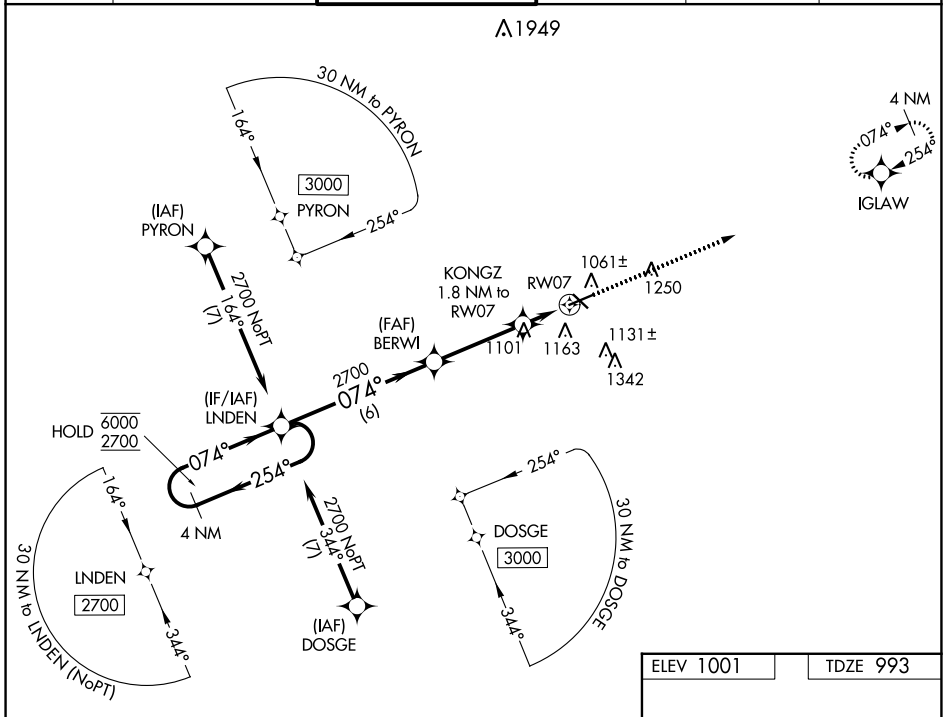
WAAS CH 62841 W07A	APP CRS 074°	Rwy Idg TDZE Apt Elev	5351 993 1001
--	------------------------	-----------------------------	--

RNAV (GPS) RWY 7

JACKSON COUNTY/REYNOLDS FLD (JXN)

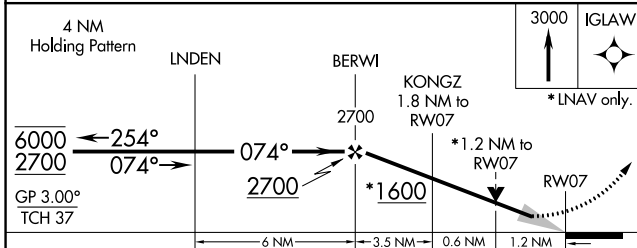
RNP APCH.	For uncompensated Baro-VNAV systems, LNAV/ VNAV NA below -23°C or above 54°C.	MISSED APPROACH: Climb to 3000 direct IGLAW and hold.
-----------	---	---

ATIS 125.725	GREAT LAKES APP CON * 127.3 335.575	JACKSON TOWER * 128.475 (CTAF) 257.8	GND CON 121.9	CLNC DEL 121.9	UNICOM 122.95
------------------------	---	--	-------------------------	--------------------------	-------------------------

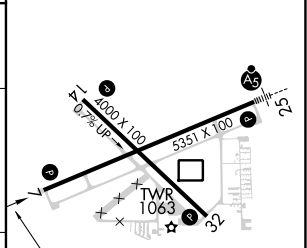


EC-1, 07 SEP 2023 to 05 OCT 2023

EC-1, 07 SEP 2023 to 05 OCT 2023



ELEV 1001	TDZE 993
-----------	----------



CATEGORY	A	B	C	D
LPV DA		1258-7/8	265 (300-7/8)	
LNAV/VNAV DA		1292-7/8	299 (300-7/8)	
LNAV MDA	1400-1	407 (400-1)	1400-1 1/8	407 (400-1 1/8)
CIRCLING	1480-1	479 (500-1)	1660-1 3/4 659 (700-1 3/4)	1660-2 659 (700-2)

074° to RW07

HIRL Rwy 7-25
MIRL Rwy 14-32
REIL Rwys 7 and 32