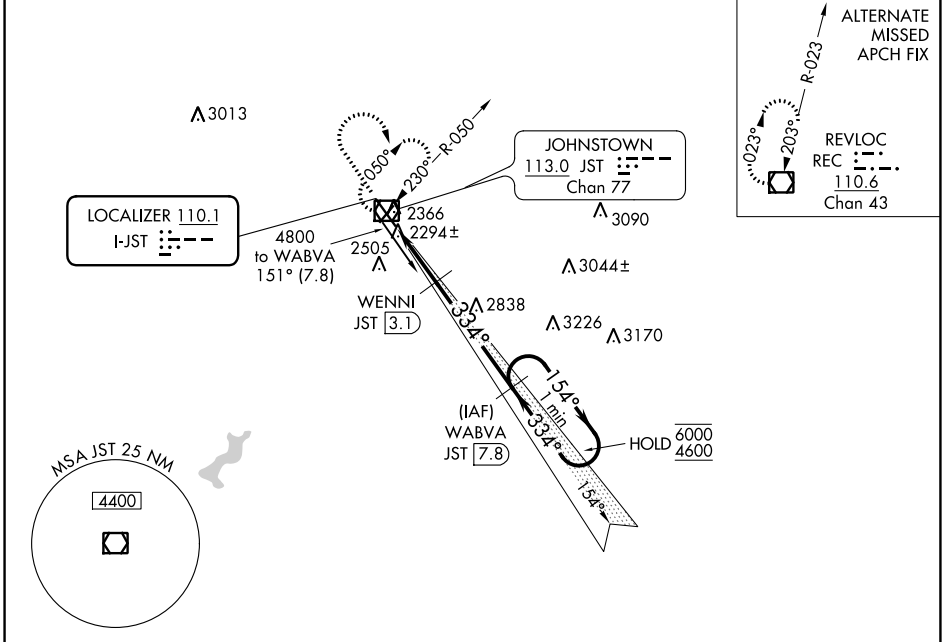


LOC I-JST <b>110.1</b>	APP CRS <b>334°</b>	Rwy Idg TDZE Apt Elev	<b>6484</b> <b>2281</b> <b>2284</b>
---------------------------	------------------------	-----------------------------	---

# ILS or LOC RWY 33

JOHN MURTHA JOHNSTOWN/CAMBRIA COUNTY (JST)

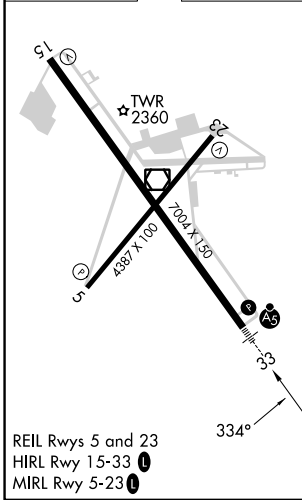
DME required. ▼ Glide slope unusable beyond 5 degrees left of course. ▲ For inop ALS, increase S-LOC 33 Cat C/D visibility to 7/8 SM.		MALSR	MISSED APPROACH: Climb to 3700 then climbing right turn to 4600 direct JST VOR/DME and hold, continue climb-in-hold to 4600.		
ATIS <b>118.325</b>	JOHNSTOWN APP CON ★ <b>121.2 299.2</b>	JOHNSTOWN TOWER ★ <b>125.75</b> (CTAF) <b>0</b>	GND CON <b>121.6</b>	CLNC DEL <b>126.85 235.775</b>	UNICOM <b>122.95</b>



NE-4, 07 SEP 2023 to 05 OCT 2023

NE-4, 07 SEP 2023 to 05 OCT 2023

ELEV 2284	<b>D</b>	TDZE 2281
-----------	----------	-----------



3700	4600	JST	VGSI and ILS glidepath not coincident (VGSI Angle 3.00/TCH 53).	One Minute Holding Pattern
* LOC only.		WENNI JST (3.1)	WABVA JST (7.8)	6000 / 4600
JST (0.6)	* JST (1.5)	334°	154°	GS 3.00° TCH 58
0.9	1.6	4.7 NM		
CATEGORY	A	B	C	D
S-ILS 33	2481-1/2		200 (200-1/2)	
S-LOC 33	2600-1/2		319 (400-1/2)	
<b>C</b> CIRCLING	2700-1 416 (500-1)	2880-1 596 (600-1)	2880-1 1/2 596 (600-1 1/2)	3000-2 1/4 716 (800-2 1/4)