

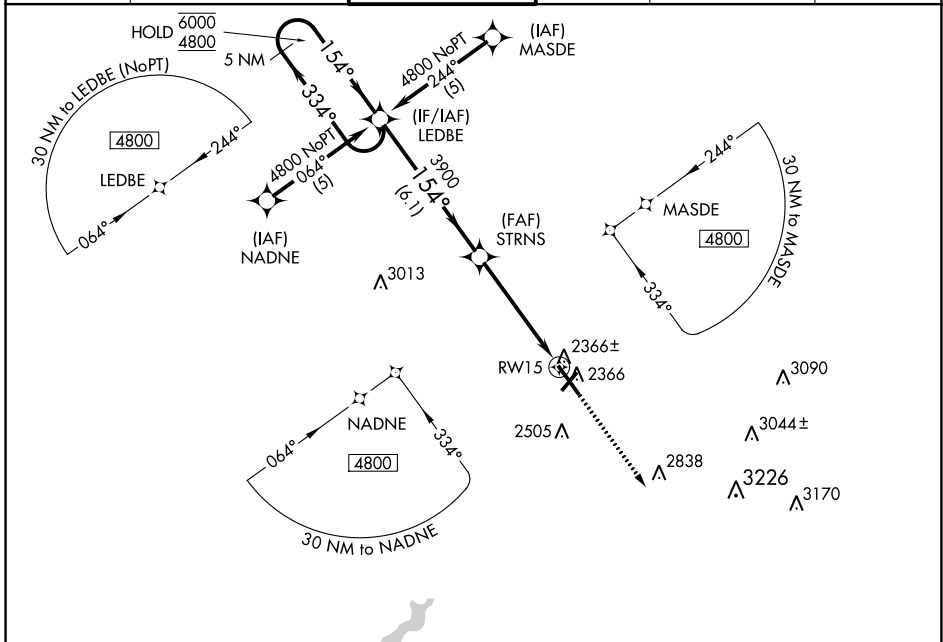
WAAS CH 53513 W15A	APP CRS 154°	Rwy Idg TDZE Apt Elev	6698 2276 2284
--	------------------------	-----------------------------	---

RNAV (GPS) RWY 15

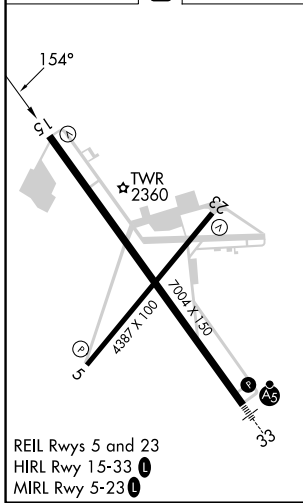
JOHN MURTHA JOHNSTOWN/CAMBRIA COUNTY (JST)

RNP APCH - GPS.		MISSED APPROACH: Climb to 4900 direct COTSO and hold.		
Baro-VNAV NA.				

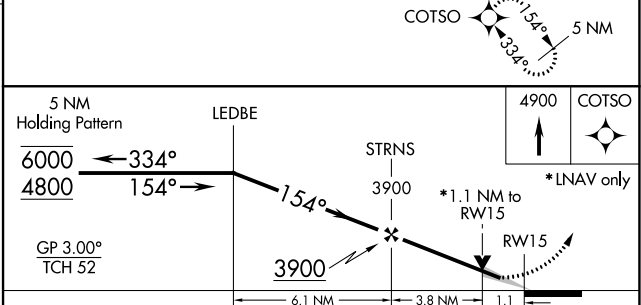
ATIS 118.325	JOHNSTOWN APP CON ★ 121.2 299.2	JOHNSTOWN TOWER ★ 125.75 (CTAF)	GND CON 121.6	CLNC DEL 126.85 235.775	UNICOM 122.95
------------------------	---	---	-------------------------	-----------------------------------	-------------------------



ELEV 2284		TDZE 2276
-----------	--	-----------



REIL Rws 5 and 23
HIRL Rwy 15-33
MIRL Rwy 5-23



	A	B	C	D
LPV DA	2526-3/4 250 (300-3/4)			
LNAV/VNAV DA	2595-1 319 (400-1)			
LNAV MDA	2680-1	404 (400-1)	2680-1 1/8 404 (400-1 1/8)	2680-1 1/4 404 (400-1 1/4)
CIRCLING	2700-1 416 (500-1)	2880-1 596 (600-1)	2880-1 1/2 596 (600-1 1/2)	3000-2 1/4 716 (800-2 1/4)

NE-4, 07 SEP 2023 to 05 OCT 2023

NE-4, 07 SEP 2023 to 05 OCT 2023