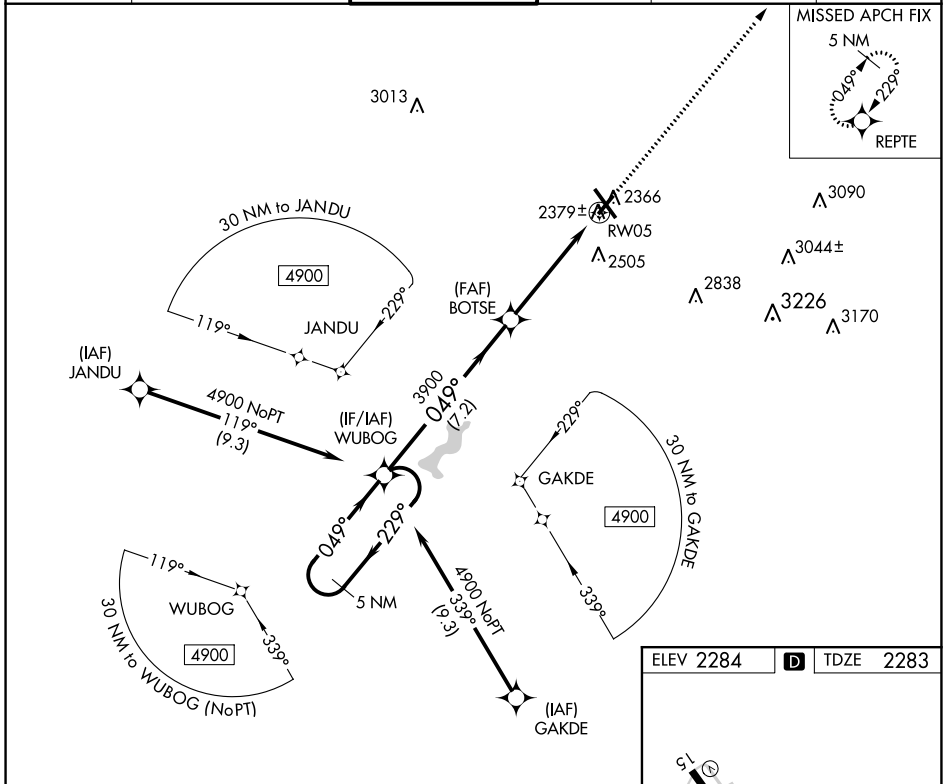


WAAS CH 61029 W05A	APP CRS 049°	Rwy Idg TDZE 4387 2283 Apt Elev 2284
--	------------------------	---

RNAV (GPS) RWY 5

JOHN MURTHA JOHNSTOWN/CAMBRIA COUNTY (JST)

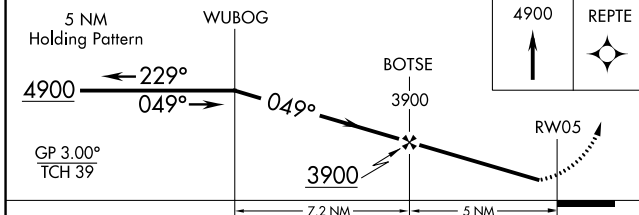
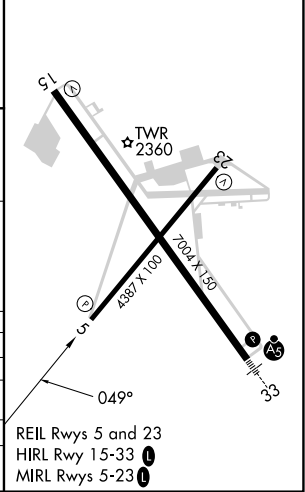
<p>▼ When local altimeter setting not received, procedure NA. For uncompensated Baro-VNAV systems, LNAV/VNAV NA below -19°C (-2°F) or above 29°C (84°F). DME/DME RNP-0.3 NA. Rwy 5 helicopter visibility reduction below ¾ SM NA.</p>		<p>MISSED APPROACH: Climb to 4900 direct REPTC and hold.</p>			
ATIS 118.325	JOHNSTOWN APP CON ★ 121.2 299.2	JOHNSTOWN TOWER ★ 125.75 (CTAF) 0	GND CON 121.6	CLNC DEL 126.85 235.775	UNICOM 122.95



NE-4, 07 SEP 2023 to 05 OCT 2023

NE-4, 07 SEP 2023 to 05 OCT 2023

ELEV 2284	D	TDZE 2283
-----------	----------	-----------



5 NM Holding Pattern	WUBOG	BOTSE	RW05
4900	← 229°	049°	
GP 3.00° TCH 39		3900	
		7.2 NM	5 NM