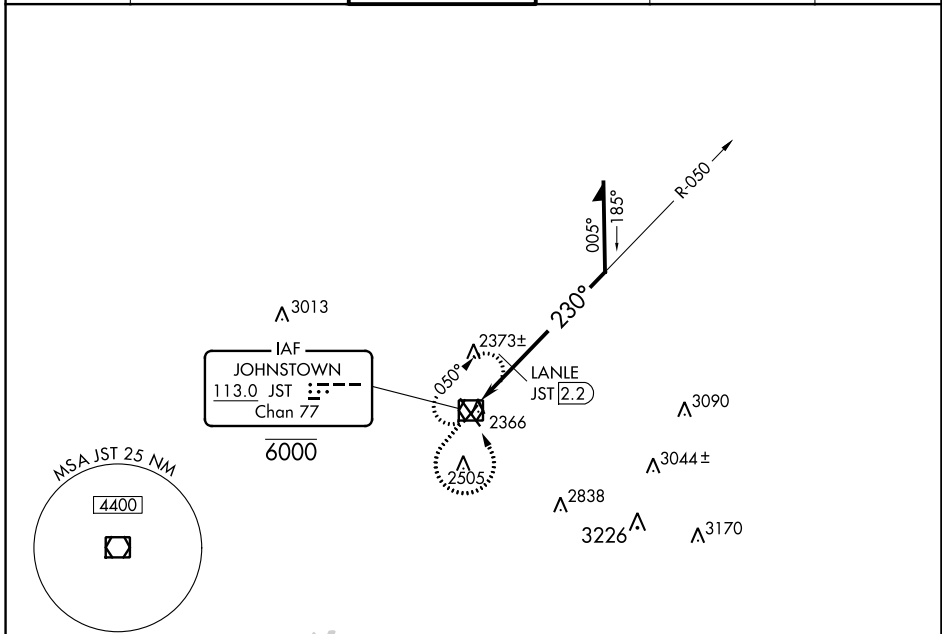


VOR/DME JST <b>113.0</b> Chan 77	APP CRS <b>230°</b>	Rwy ldg TDZE <b>4387</b> <b>2284</b>	Apt Elev <b>2284</b>
--	------------------------	--	-------------------------

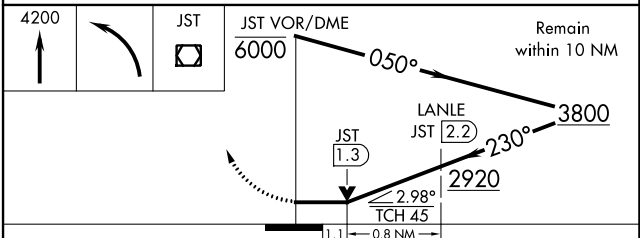
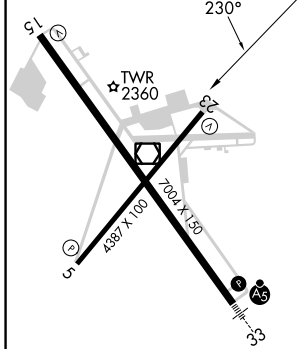
# VOR Y RWY 23

JOHN MURTHA JOHNSTOWN/CAMBRIA COUNTY (JST)

Rwy 23 helicopter visibility reduction below 3/4 SM NA.		MISSED APPROACH: Climb to 4200 then left turn direct JST VOR/DME and hold.			
ATIS <b>118.325</b>	JOHNSTOWN APP CON * <b>121.2 299.2</b>	JOHNSTOWN TOWER * <b>125.75 (CTAF) 0</b>	GND CON <b>121.6</b>	CLNC DEL <b>126.85 235.775</b>	UNICOM <b>122.95</b>



ELEV 2284	<b>D</b>	TDZE 2284
-----------	----------	-----------



CATEGORY	A	B	C	D
S-23	2920-1	636 (700-1)	2920-1 <sup>3</sup> / <sub>4</sub> 636 (700-1 <sup>3</sup> / <sub>4</sub> )	2920-2 636 (700-2)
<b>C</b> CIRCLING	2920-1	636 (700-1)	2920-1 <sup>3</sup> / <sub>4</sub> 636 (700-1 <sup>3</sup> / <sub>4</sub> )	3000-2 <sup>1</sup> / <sub>4</sub> 716 (800-2 <sup>1</sup> / <sub>4</sub> )
LANLE FIX MINIMUMS				
S-23	2660-1 376 (400-1)			2660-1 <sup>1</sup> / <sub>4</sub> 376 (400-1 <sup>1</sup> / <sub>4</sub> )
<b>C</b> CIRCLING	2700-1 416 (500-1)	2880-1 596 (600-1)	2880-1 <sup>1</sup> / <sub>2</sub> 596 (600-1 <sup>1</sup> / <sub>2</sub> )	3000-2 <sup>1</sup> / <sub>4</sub> 716 (800-2 <sup>1</sup> / <sub>4</sub> )

REIL Rws 5 and 23  
HIRL Rwy 15-33 **0**  
MIRL Rwy 5-23 **0**

# VOR Y RWY 23

NE-4, 07 SEP 2023 to 05 OCT 2023

NE-4, 07 SEP 2023 to 05 OCT 2023